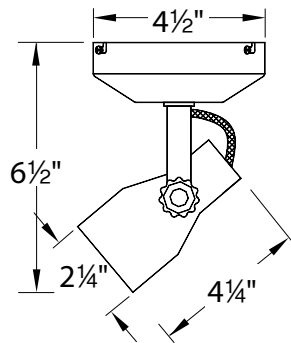


LOW VOLTAGE - model ME-007

LED MR16 Display Spot Light

WAC LIGHTING

Responsible Lighting®



Fixture Type:

Catalog Number:

Project:

Location:

LED

| | | | |
|-------------|-----------|-------------|--------------|
| Power: | 8W | Color Temp: | 3000K |
| Lumens: | 450 | CRI: | 85 |
| CBCP: | 833 | Dimming: | Yes |
| Comparable: | 35 W MR16 | Rated Life: | 25,000 hours |

PRODUCT DESCRIPTION

Engineered with an integral transformer and designed for mounting to walls or ceilings, Display Spot Lights deploy optimal accent lighting from surface mounted canopies that can be custom designed with any of WAC low voltage track heads.

FEATURES

- Integral Electronic transformer
- Accepts 12V LED MR16, Halogen MR16 lamps up to 50W max
- LED MR16 included when ordered as LED
- 1 watt minimum load
- Can be wall or ceiling mounted
- Available extensions from 6 to 48 inches
- Fixtures available with 6", 12", 18", 24", 36", 48", 72" and 96" extensions (factory assembled in BK, WT, or BN). Specify fixture style and finish when ordering (i.e.: ME-007LED-X6-BK). Extended fixtures are available only as a complete unit from the factory.
- Special lens types such as spread lenses and UV lenses can be ordered from WAC and used in place of the supplied clear lens.

SPECIFICATIONS

Construction: Die-cast aluminum fixture with bi-pin ceramic socket and 18 gauge teflon insulated wires, with fiberglass sleeves. Supplied with tempered clear glass lens.

Transformer: 120V/12V Electronic transformer with auto reset, soft start, and short circuit protection features.

Dimming: Smooth and continuous ELV dimming to 10%

Aiming: 350° horizontal rotation and 90° vertical aiming. Two aiming screws (one on each side of fixture) allow for locking fixture aiming angle.

Standards: UL & CUL Listed

ORDER NUMBER

| Model # | Lamping | Extension (Optional) | Finish |
|-----------------------------------|------------------------------|----------------------|---|
| ME-007LED ME-007 | <i>LED</i> <i>Halogen</i> | X6 6" | BK <i>Black</i> BN <i>Brushed Nickel</i> WT <i>White</i> |
| | | X12 12" | |
| | | X18 18" | |
| | | X24 24" | |
| | | X36 36" | |
| | | X48 48" | |

 - -

Example: **ME-007LED-BK** or **ME-007LED-X6-BK**

ALTERNATIVE LENSES

| | | Color | |
|------------------|--------------------|------------|--------|
| Color Lens | LENS-16 | AMB | Amber |
| | | BLU | Blue |
| UV Filter Lens | LENS-16-UVF | GRN | Green |
| | | RED | Red |
| | | YEL | Yellow |
| Frosted Lens | LENS-16-FR | | |
| Spread Lens | LENS-16-SPR | | |
| Beam Elongating | LENS-16-BEL | | |
| Honeycomb Louver | LENS-16-HCL | | |

WAC Lighting

www.waclighting.com

Phone (800) 526.2588 • Fax (800) 526.2585

Headquarters/Eastern Distribution Center

44 Harbor Park Drive • Port Washington, NY 11050

Phone (516) 515.5000 • Fax (516) 515.5050

Western Distribution Center

1750 Archibald Avenue • Ontario, CA 91760

Phone (800) 526.2588 • Fax (800) 526.2585