

Project/Job Name: _____

Location: _____

Fixture Type: _____

Notes: _____

65-862-4 - LED Area Light Type IV; 150W; Bronze Finish; 4000K; 277-480V



ELECTRICAL

| | |
|-------------------------|---------------------------------|
| Technology: | LED |
| Watts: | 150W |
| Volts: | 277V-480V |
| Lumens: | 19507L |
| Lamp Base : | Integrated |
| CRI: | 80 |
| CCT (Kelvins): | 4000K |
| Color Description: | Cool White |
| Hours Rated: | 50000 |
| Dimmable: | Yes-Dimmable |
| Dimmable Down To %: | 100 to 20 percent |
| DimmableText: | 0-10V Dimming |
| HID Equivalent : | 320W |
| Operating Temperature : | -40C (-40F) to +45C (+113F) |
| Lamp Included : | Integrated |
| Number of LEDs : | 215 |
| Surge Protection : | Built-in surge protection - 4KV |
| Power Factor : | >0.9 |
| Voltage Type: | Range Voltage |
| Warranty: | 5 Year Limited - Fixtures |

PACKAGING

| | |
|------------------|----------------------|
| Each UPC: | 045923686214 |
| Each Quantity: | 1 |
| Each Dimensions: | 23.23 x 14.37 x 5.71 |
| Case UPC: | 10045923686211 |
| Case Quantity: | 1 |
| Case Dimensions: | 23.23 x 14.37 x 5.71 |

PHYSICAL

| | |
|----------------|---------------------------|
| Finish: | Bronze |
| Lens Material: | Polycarbonate (PC) |
| Finish Family: | Bronze |
| Dimensions: | L:20.71" W:12.40" H:3.11" |
| Weight (Lbs.): | 8.08 |
| Material: | Die-cast Aluminum |
| Sensor: | Optional |

COMPLIANCE

| | |
|------------------------|--|
| Safety Listing: | cULus - Certified |
| Location Rating: | Wet |
| Indoor/Outdoor: | Indoor; Outdoor |
| Energy Star Qualified: | No |
| DLC Approved: | Yes |
| DLC Classification: | Premium |
| DLC ID: | S-oG6WE4 |
| DLC Primary Use: | Outdoor Pole/Arm-Mounted Area and Roadway Luminaires |
| CA Prop 65: | Lead |
| BAA Compliant: | No |
| FCC Compliant: | Yes |
| IP Rating: | IP65 |
| IK Rating: | IK10 |
| RoHS Compliant: | Yes |
| SDS Class: | LED_Fixture |
| B.U.G Rating: | B4-U3-G4 |
| Restrictions: | No Restrictions |

INFO

| | |
|---------------------|----------------------------|
| Additional Info: | Powder Coated |
| Specification Note: | Type IV Light Distribution |
| Includes: | Slip-fitter Mount |

ACCESSORIES



65-870 Area Light; Universal; Direct and Slip Fitter Mount; Bronze Finish



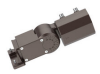
65-871 Area Light; Direct Mount; Square or Round; Pole Mount; Bronze Finish



65-872 Area Light; Trunnion Mount; Bronze Finish



65-873 Yoke Mount Bracket; Bronze Finish; For Use With 100W/150W/200W Area Lights; Bronze Finish



65-875 Area Light Extended Slipfitter Mount with Sensor Knockouts; Bronze Finish



65-876 Area Light Fixed Arm Mount with Sensor Knockouts; Bronze Finish



65-877 Area Light Cutoff Shield; Bronze Finish; For Use With 100W/150W/240W/300W Fixtures



86-223 Area Light Photocell Socket; 277-480 Volt



86-225 10KV Area Light Surge Protector; 277-480 Volt



86-226 12-24 Volt Area Light PIR Sensor; 277-480 Volt