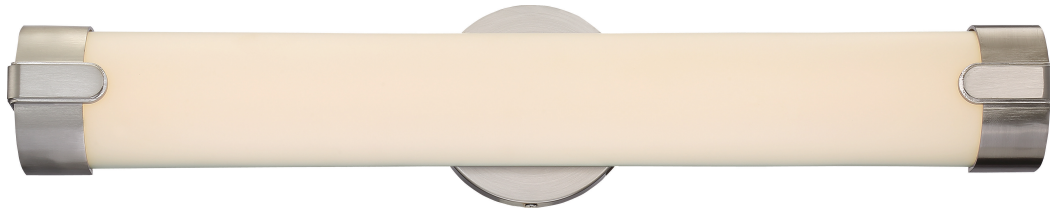


**62-922** - Loop; Double LED Wall Sconce; Brushed Nickel Finish



**GENERAL**

Company	NUVO
EA Height	4.13
EA Width	5.51
EA Length	25.39
Bulb Included	Integrated
Extends (in)	3.13
Material	Acrylic
Fixture Type	Sconce
Status	Active
Style	Contemporary
Up Down Installation	Universal
CCT Selectable	No
Wattage Selectable	No
Collection	Loop
Finish Family	Nickel
Amps	0.217A
Mounting Diameter	5.0
Has Camera	No
IOT Enabled	No
Power Factor	0.99
SDS Class	LED_Fixture
Indoor Outdoor	Indoor
Product Technology	LED
Incandescent Equivalent	125W

**ELECTRICAL**

CCT (Kelvin Temp)	3000K
Dimmable	Yes-Dimmable
Hours Rated	30000
Color Temp	Warm White
CRI	90+
Dimming Type	120V only, Phase cut
Operating Frequency	60Hz
Operating Temp	+32F to +122F (0C to +50C)
Lumens	2080L
Volts	120v
Watts	26W

**PHYSICAL**

Lamp Base	Integrated
Finish	Brushed Nickel
ANSI Base	Integrated
Lamp Type	Integrated LED

**ADDITIONAL INFO**

Warranty	3-Years
----------	---------

**PACKAGING**

UPC	045923329227
Case Cube	2.4882
Case Height	13.78
Case Length	25.98
Case Quantity	6
Case UPC	10045923329224
Case Weight	26.9
Case Width	12.01
EA Cube	0.3344
EA Height	4.13
EA Length	25.39
EA Quantity	1
EA Weight	4.0
EA Width	5.51
Pack Type	Box
Web Height	4.0
Web Width	24.0

**COMPLIANCE**

ADA Compliant	Yes
CA Prop 65	Lead
FCC Compliant	Yes
Location Rating	Damp
ROHS Compliant	Yes
Safety Listing	cETLus - Listed
California Ban	California T24 Listed
DLC Approved	No
Title 20	Exempt
T24 Compliant	Yes