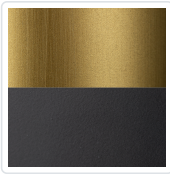


Hugo 52-in Ceiling Fan

Model	Light Kit	Color Temperature	Control	CFM (High)	Motor	Included Downrod
CF72952-5CCT CF72952-BG/MB-5CCT CF72952-BG/WH-5CCT	Included	5CCT,2700K,3000K,3500K,4000K,5000K	Remote/Smart Control	5476.59	DC	4-1/2" (Additional Sold Separately)



FINISHES



Brushed  
Gold/Matte Black  
(BG/MB)



Brushed  
Gold/Matte White  
(BG/WH)



Matte Black  
(MB)



White  
(WH)

Introducing the Hugo Fan - where modern sophistication meets handsome design. With its three sleek blades and two stunning finish options, Hugo adds a touch of elegance to any space. Customize your experience with the optional light kit, creating the perfect ambiance for any occasion. Stay in control with the convenience of smart fan technology, accessible through the Smart by Bond app or the included handheld remote. Featuring six adjustable speeds, a reverse function for year-round comfort, and dimming capabilities on the light kit, the Hugo Fan redefines convenience and style in one exquisite package.

SPECIFICATION DETAILS

Fixture Dimensions	D52" x H12-7/8"
Diffuser Details	Frosted Polycarbonate Lens
Light Source/Life	Light Kit
Material	Aluminum, Steel, ABS Blades
Blade	3 Blades (22 Degrees Pitch)
Ceiling to Blade Min Distance (Inch)	12.5
Paint Finish	BG01 MB01 (BG/MB), BG01 WH01 (BG/WH)
Slopped Ceiling Adaptable	Yes, 18 Deg
Rod Length	4-1/2" (for different rod length, contact factory)
Fan Speeds	6 Speed (Reversible: Yes) (59-161 RPM)
Airflow Efficiency (CFM/WATT)	183
Delivered Lumens	BG/MB-1225lm BG/WH-1225lm MB-1170lm WH-1111lm

\* For custom options, contact customer service.  
\* For warranty information, please visit [www.kuzcolighting.com/warranty](http://www.kuzcolighting.com/warranty)

WWW.KUZCOLIGHTING.COM

USA: 3035 E. LONE MOUNTAIN ROAD - LAS VEGAS, NV 89081

CANADA: 19054 28TH AVENUE - SURREY, BC V3Z 6M3