

## SPECIFICATIONS

## Certifications/Qualifications

[www.kichler.com/warranty](http://www.kichler.com/warranty)

## Dimensions

Weight	0.03 LBS
Length	2.00"
Width	2.00"

## Mounting/Installation

Interior/Exterior	Interior
Location Rating	Accessory, Listing Not Required

## FIXTURE ATTRIBUTES

## Housing

Primary Material	Steel
------------------	-------

## Product/Ordering Information

SKU	1TEA090HCONN
Finish	Silver Various
Style	Other
UPC	783927558082

## Finish Options



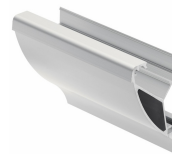
Silver Various



## ALSO IN THIS FAMILY



1TEE2S1SFSSIL



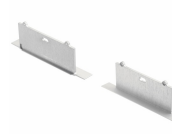
1TEC2M2SF8SIL



1TEC6EMRC8SIL



1TEE2DMRCSSIL



1TEE6EMRCSSIL



1TELC008WHO