

SELENE

FR41905LCB

LARGE MULTI TIER CHANDELIER

Selene is what dreams are made of. Swirled glass globes dance along the silhouette, providing an enticing, ambient glow and attracting attention in all the right ways. Selene indulges in the details and revels in the spotlight, projecting a strong confidence in modern design.

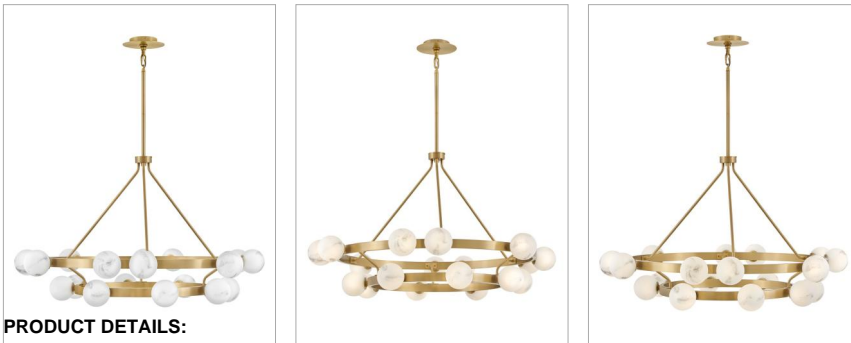
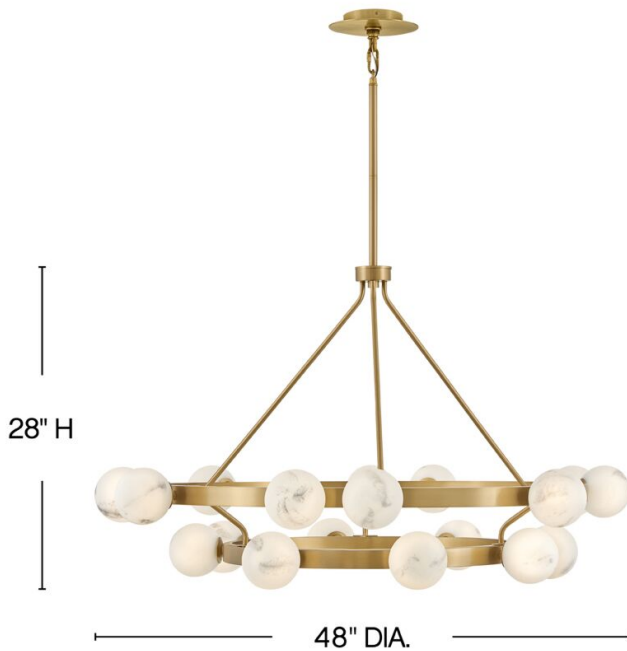
DETAILS	
FINISH:	Lacquered Brass
MATERIAL:	Steel
GLASS:	Swirled
SLOPE DEGREE:	90
DIMMABLE:	YES - WITH DIMMABLE LAMP (NOT INCLUDED)

DIMENSIONS	
WIDTH:	48"
HEIGHT:	28"
WEIGHT:	17.3lb

LIGHT SOURCE	
LIGHT SOURCE:	Socketed
WATTAGE:	18-7w G9 LED
VOLTAGE:	120v

MOUNTING	
CANOPY:	5.25" Dia.
LEAD WIRE:	1 X 144"
MAX HEIGHT:	63.3

SHIPPING	
CARTON LENGTH:	44.3
CARTON WIDTH:	10.5
CARTON HEIGHT:	44.3
CARTON WEIGHT:	48.4



PRODUCT DETAILS:

- Suitable for use in dry (indoor) locations as defined by NEC and CEC. Meets United States UL Underwriters Laboratories & CSA Canadian Standards Association Product Safety Standards.
- This item may be hung on a sloped ceiling
- Bold silhouette with dramatic details creates a modern statement
- G9 LED lamp required

HINKLEY

HINKLEY
33000 Pin Oak Parkway
Avon Lake, OH 44012

PHONE: (440) 653-5500
Toll Free: 1 (800) 446-5539

hinkley.com