

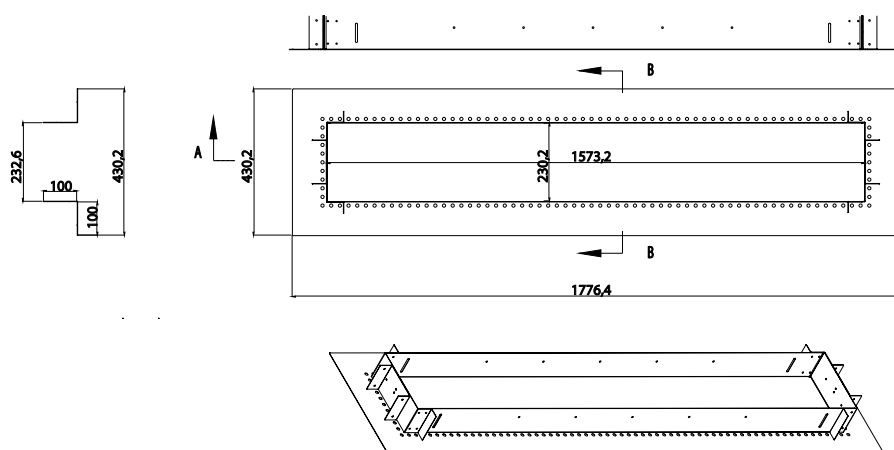
## EF61FMPF Series



61"

### FEATURES

Ideal for both indoor and outdoor applications in commercial or residential settings and crafted from durable 304 stainless steel, it is built to withstand the elements, ensuring long-lasting performance.



| DESCRIPTION         | CODE     | FINISH          | CODE | CUSTOMIZATION                | CODE   |
|---------------------|----------|-----------------|------|------------------------------|--------|
| 61" Flush Mount Kit | EF61FMPF | BLACK           | B    | MARINE GRADE STAINLESS STEEL | 316-SS |
|                     |          | STAINLESS STEEL | S    |                              |        |
|                     |          | WHITE           | W    | CUSTOM COLOR                 | RAL#   |

• For custom manufacturing contact sales

Project

Type

Date

Address

Company

- Compatible with all EF heaters
- Designed for commercial and residential applications.
- Available in a standard 304 Stainless Steel, Black, White or Marine Grade 316 Stainless Steel finish
- ETL Listed

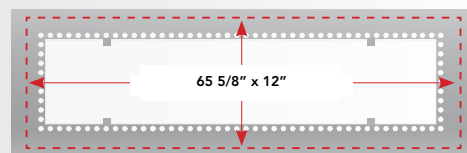


### SPECIFICATIONS

|                       |   |
|-----------------------|---|
| SERIES                | SERIES EF61FMPF   |
| FINISH                | Black, Stainless Steel, White, Custom                             |
| CONSTRUCTION          | Stainless Steel (Standard: 304 SS; Optional: 316 Marine Grade SS) |
| COMPATIBLE MODELS     | EF15, EF20, EF25, EF40, EF50 SERIES (61" HEATERS)                 |
| MOUNTING TYPE         | Recessed  |
| INTERNAL MEASUREMENTS | L= 61.94 in (1573.20 mm)<br>W= 9.06 in (230.2mm)                  |
| EXTERNAL MEASUREMENTS | L= 69.94 in (1776.40mm)<br>W= 16.94 in (430.20mm)                 |
| WEIGHT                | 18.7 lbs  |
| WARRANTY              | 3 year  |

### 61" FLUSH MOUNT FRAME

- To accommodate a 61-inch heater, the finished opening should measure 65 5/8 x 12 inches.



### WHAT'S IN THE BOX

- Flush Mount Plate
- 4ft High Temperature Whip
- Instruction manual
- "L" brackets
- High temperature marrette
- Screws