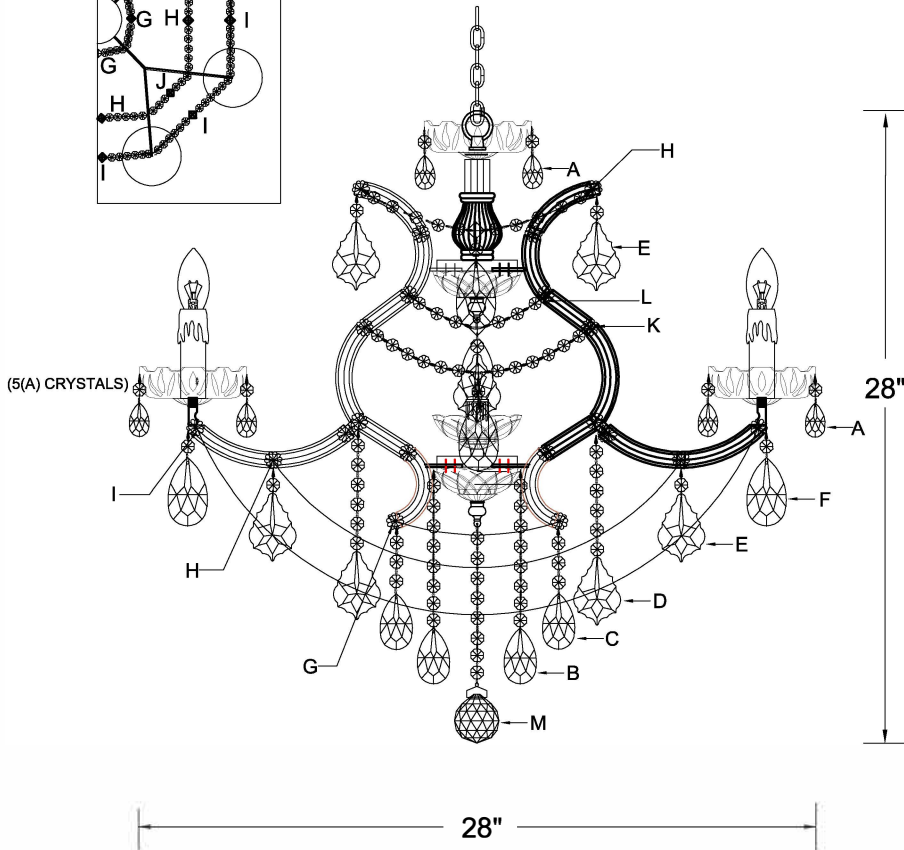
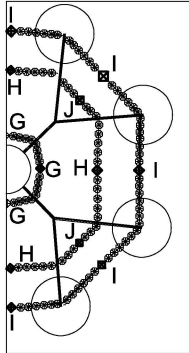


CRYSTORAMA LIGHTING



ASSEMBLY INSTRUCTION MODEL #4409-GD-CL-S



All electrical components must be installed by a licensed electrician in accordance with the National Electric Code and the appropriate local electrical codes.



**You will need 9-Candelabra Base Bulb
40 Watts Recommended 60 Watts Max
USE LED BULBS FOR EXTENDED USE**

The fixture is dry rated

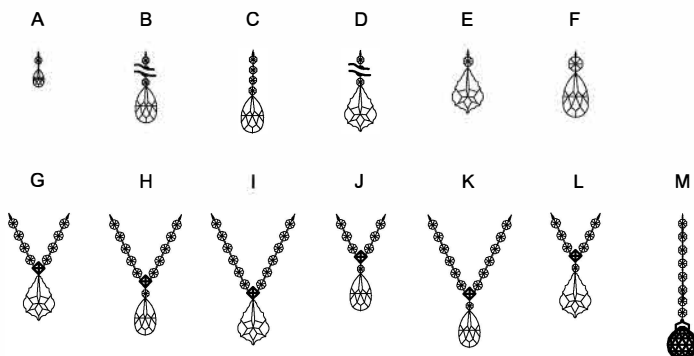
How to Install

1. Do a complete inventory of all parts and components before you start installing.
2. Screw the top glass dish & Loop on the coupling.
3. Place the glass dish and small metal dish over the bottom metal cover and secure with the finial.
4. After safety attaching fixture into outlet box, install bobeches, bulbs (not included) and proceed to connecting the power.
5. When you begin to dress the fixture, start with packet labeled(A).
6. **IMPORTANT:** Apply crystal sets in alphabetical order.

Crystal Sets

- A. 45Sets. (1)14mm + AS9-1.5"
- B. 5Sets. (8)14mm + AS9-2"
- C. 4Sets. (4)14mm + AS9-2.5"
- D. 4Sets. (6)14mm + AS20-3"
- E. 12Sets. (1)14mm + AS20-3"
- F. 8Sets. (1)28mm + AS9-3"
- G. 4Sets. (8)14mm + (1)16mm Square + AS20-3"
- H. 8Sets. (11)14mm + (1)16mm Square + AS9-2.5"
- I. 8Sets. (12)14mm + (1)16mm Square + AS20-3"
- J. 4Sets. (7)14mm + (1)16mm Square + AS9-2.5"
- K. 4Sets. (13)14mm + (1)16mm Square + AS9-2.5"
- L. 4Sets. (7)14mm + (1)16mm Square + AS20-3"
- M. 1Piece. (8)14mm + AS8-50mm Ball

DETAILED ILLUSTRATION



WARNING: This product can expose you to Lead, which is known to the State of California to cause cancer and/or birth defects or reproductive harm. For more information go to www.P65Warnings.ca.gov

CRYSTORAMA LIGHTING



Crystorama.com

PART NUMBER MODEL #4409-GD-CL-S

Part Number

Part Numbers

- A. (2)-Wire Connector
- B. (1)-Mounting Plate
- C. (2)-Outlet Box Screws
- D. (1)-Lock washer
- E. (1)-Hex Nut
- F. (1)-Nipple
- G. (1)-Canopy; w5" x h1" (XFB4405GDCA5IN)
- H. (1)-Collar Ring
- I. (1)-Collar Loop
- J. (1)-Chain; 72", 3.8mm (XFB4405GDCHA3.8MM)
- K. (1)-Ground Wire
- L. (1)-Loop
- M. (1)-Glass Dish; Ø5", 13mm hole, 5pin (XFB4409GDDIBOB5IN)
- N. (1)-Glass Dish; Ø4", 11mm hole (XFB4409DIBOB4IN)
- O. (1)-Center Bobeche; Ø4", 26mm hole (XFB4409DIBOB4INA)
- P. (1)-Glass Dish; Ø4", 11mm hole, 5pin (XFB4409GDDIBOB4IN)
- Q. (2)-Small Metal Dish
- R. (2)-Finial (XFB4405GDFIN)
- S. (4)-Frame
- T. (1)-Candle Sleeve; h2" (XFB4409CDL2IN)
- U. (8)-Candle Sleeve; h4" (XFB4418CDL4IN)
- V. (8)-Bobeche; Ø5", 26mm hole, 5pin (XFB4418GDBOB5IN)
- W. ()-Rosette

PART BAG I : Includes Parts A, C

PART BAG II : Includes Parts B, E, F, H, I, D

