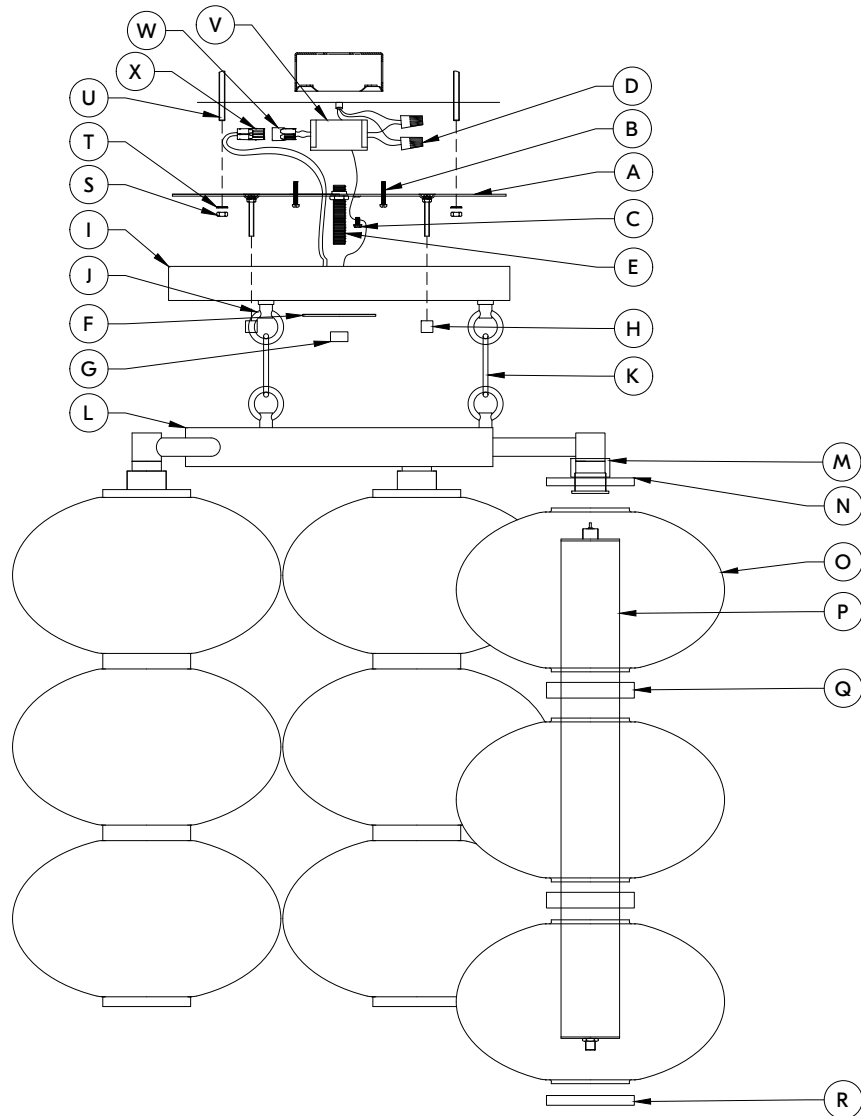


CORBETT

TOULOUSE 504-31 Installation Instructions



FIXTURE INSTALLATION

- Using the MOUNTING PLATE (A) as a template mark the holes for the THREADED ROD (U) (BY OTHERS). NOTE: THREADED ROD (U), WASHER (T), and NUT (S) (BY OTHERS) must be a minimum of $\frac{1}{4}$ and affixed to the building structure following local building codes.
- Pull the wire out from the junction box, and install the MOUNTING PLATE (A) onto the junction box with the MOUNTING SCREWS (B). Screw on the WASHERS (T) (BY OTHER), HEX NUTS (S) (BY OTHER). This fixture is designed to be mounted on heavy duty junction box rated for a minimum 90lbs. The junction box must be securely mounted to the structure of the building.
- Open the end link on the CHAIN (K) and attach to the loop on the FIXTURE ASSEMBLY (L). Hang the FIXTURE ASSEMBLY (L) on the CHAIN (K) at your desired height, and remove excess CHAIN (K).
- Feed the wire through the CHAIN (K), LOOP (I), CANOPY (I) and MOUNTING PLATE (A).
- Open the top link on the CHAIN (K), and Hang the FIXTURE ASSEMBLY (L) to the LOOP (I).
- Attach the Ground wire (Green) to the ground inside the outlet box (Generally green or bar copper wire) or the GROUND SCREW (C) on the MOUNTING PLATE (A). NEVER CONNECT GROUND WIRE TO "HOT" WIRE! FAILURE TO FOLLOW THIS COULD RESULT IN SERIOUS INJURY OR DEATH!
- Connect the white wire on the DRIVER (V) to the neutral (Generally white) wire in the outlet box. Fasten the wires together with an approved fastener (WIRE NUT) (D). Starting 1" below the fastener, tightly wrap the connection with electrical tape so that the connections seals the end of the fastener. MAKE SURE THERE ARE NO EXPOSED WIRE OF STRANDS THAT COULD CAUSE A DANGEROUS SHORT CIRCUIT!
- Connect the black wire on the DRIVER (V) to the hot (Generally black) wire in the junction box. Fasten the joined wires same as previous step. NEVER REVERSE HOT AND NEUTRAL WIRES. FAILURE TO FOLLOW THIS COULD RESULT IN SERIOUS INJURY OR DEATH!
- Insert the FEMALE (L) into the MALE (M).
- Roll up any remaining wire and DRIVER (V) inside the CANOPY (I) and Push the Fixture Lead wires back into the junction box. Lift up the CANOPY (I) up to the ceiling, and secure with the PLATE (F), FINIAL (G) and CAP NUTS (H).
- Screw the LED (P) up to FIXTURE ASSEMBLY (L) of the fixture.
- Attach the GLASS (O) with RINGS (Q) to the FIXTURE ASSEMBLY (L) and secure with the CAP (N), RING (M) and FINIAL (R).
- Restore power to the outlet at the breaker or fuse box.

PART(S)	REPLACEMENT PART NAME	NUMBER
A,B,C,D,E,S,T,U	HARDWARE KIT	HDW-504-31
G	FINIAL	FIN-504-31
H	CAP NUT	CPN-504-31
I,J	CANOPY ASSEMBLY	CAS-504-31
K	CHAIN	CHN-CNI045
O	GLASS	GLS-504-31

PART(S)	REPLACEMENT PART NAME	NUMBER
Q	RING	RNG-504-31
R	BOTTOM CAP	CAP-504-31
V	DRIVER	DVR-504-31