

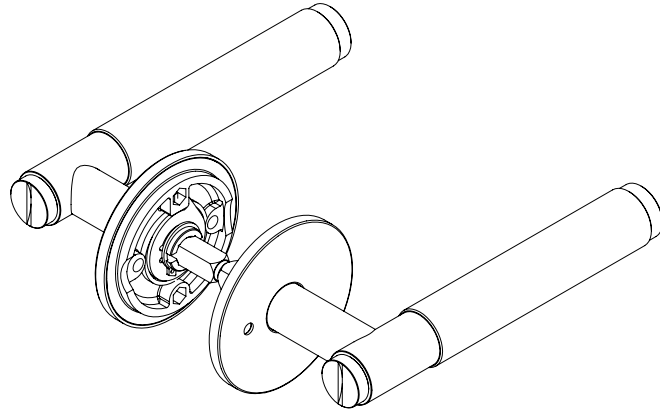
# BUSTER+PUNCH

LONDON

## US DOOR LEVER HANDLE

PRE-DRILLED / PRIVACY / CROSS / 41.5mm CENTRES

INSTRUCTION MANUAL US  
MANUEL D'UTILISATION É -U  
MANUAL DE INSTRUCCIONES (EE UU)



### FITTINGS KIT CONTENTS



**x1**  
ALLEN KEY  
(2.5mm X 80mm X 20mm)



**x2**  
BOLT BOSSES  
(M4 X 33mm)



**x1**  
PRIVACY PIN



**x2**  
THROUGH BOLTS  
(M4 X 35mm)



**x1**  
SPARE CUP  
POINT GRUB  
SCREW  
(M4 X 6mm)

**NOTE: WHEN DISASSEMBLING THE TWO LEVER HANDLES, KEEP THEIR PARTS SEPARATE AS THEY ARE NOT INTERCHANGEABLE.**

**EN: USE: FOR RESIDENTIAL, INTERIOR USE ONLY.**

**DISCLAIMER: THIS PRODUCT IS NOT SUITABLE FOR COMMERCIAL USE. ALWAYS CONSULT A TRADE PROFESSIONAL WHEN INSTALLING THESE PRODUCTS. BUSTER + PUNCH IS NOT RESPONSIBLE FOR THE USAGE OR FEASIBILITY OF INSTALLATION REQUIREMENTS. THIS PRODUCT IS NOT SUITABLE FOR DAMP OR WET ENVIRONMENTS.**

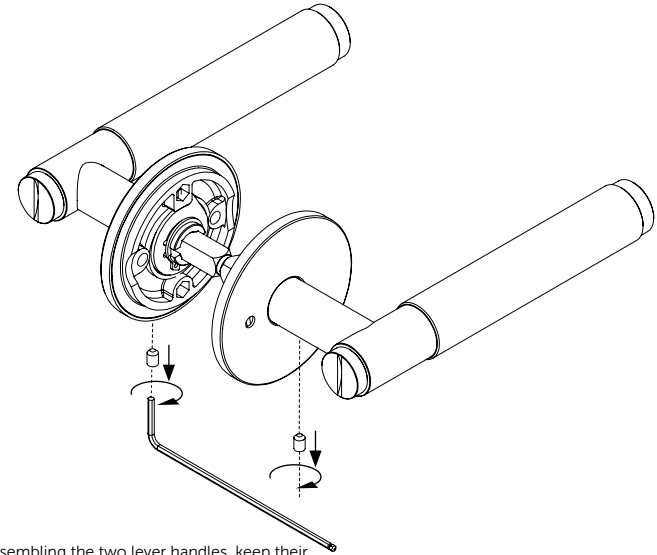
**FR: UTILISATION :** usage résidentiel. Pour l'intérieur seulement.

**AVERTISSEMENT :** ce produit ne convient pas à un usage commercial. Faites toujours appel à un professionnel pour installer ces produits. Buster + Punch n'est pas responsable de l'utilisation ou de la faisabilité des exigences d'installation. Ce produit ne convient pas aux environnements humides ou mouillés.

**SP: USO:** Para uso doméstico. Solo para uso interno. **AVISO LEGAL:** Este producto no es apto para uso comercial. Consulte siempre a un profesional del sector cuando vaya a instalar estos productos. Buster + Punch no se hace responsable de su uso ni de la viabilidad de los requisitos de instalación. Este producto no es adecuado para entornos húmedos o mojados.

BUSTERANDPUNCH.COM/US  
L0240

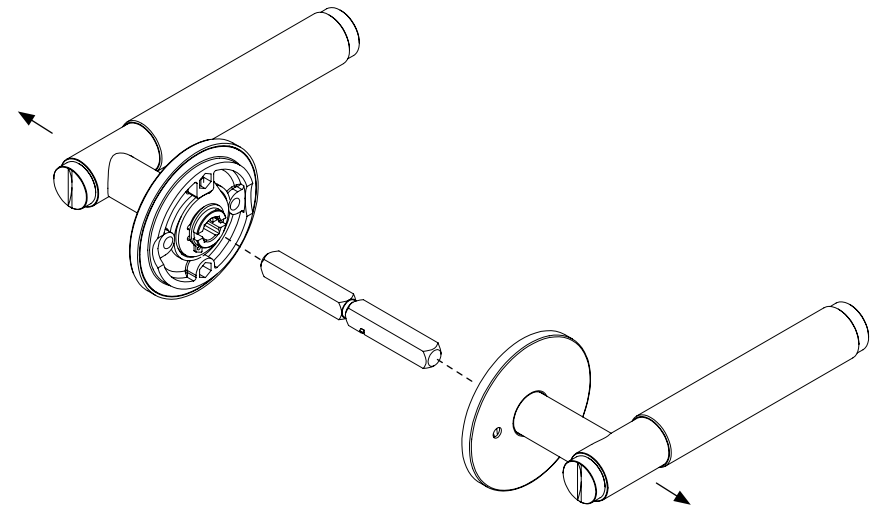
## 1 REMOVE GRUB SCREWS WITH ALLEN KEY.



### NOTE:

When disassembling the two lever handles, keep their parts separate as they are not interchangeable.

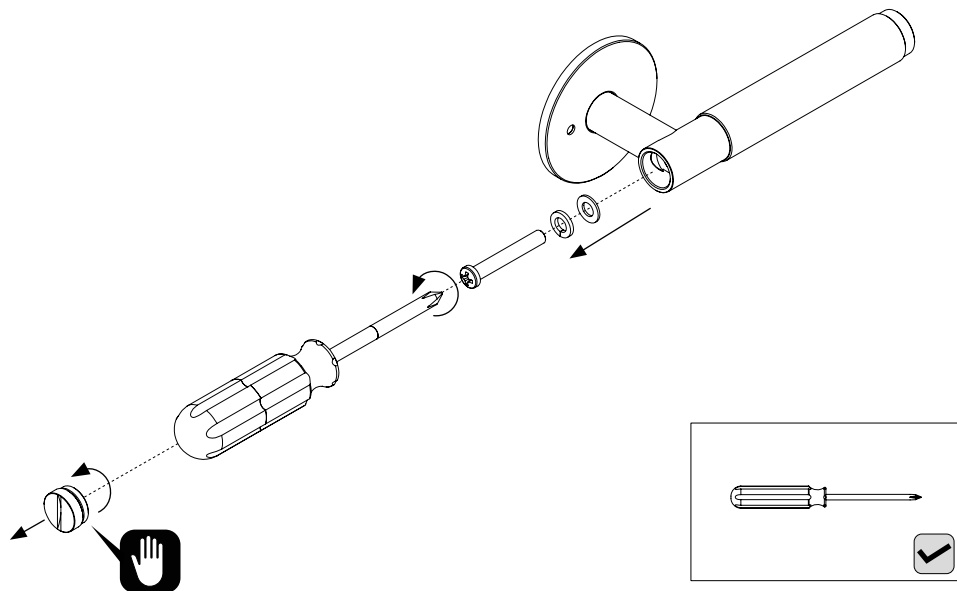
## 2 PULL APART LEVER HANDLES AND REMOVE SPINDLE.



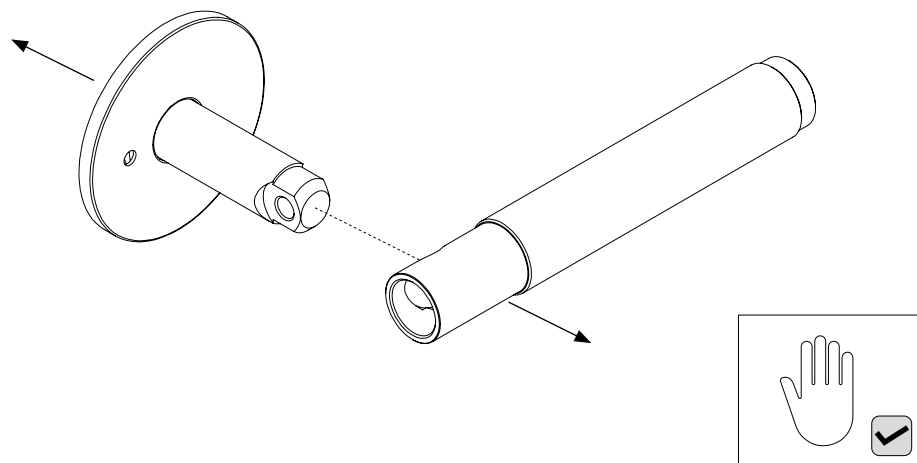
### NOTE:

When disassembling the two lever handles, keep their parts separate as they are not interchangeable.

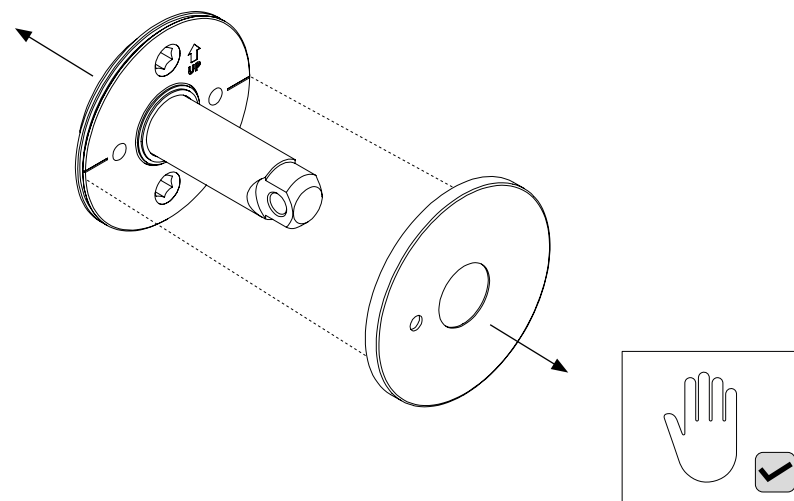
**3 UNSCREW END CAP AND USE CROSS HEAD SCREW DRIVER TO REMOVE SCREW AND WASHERS FROM INSIDE OF THE LEVER HANDLE BAR.**



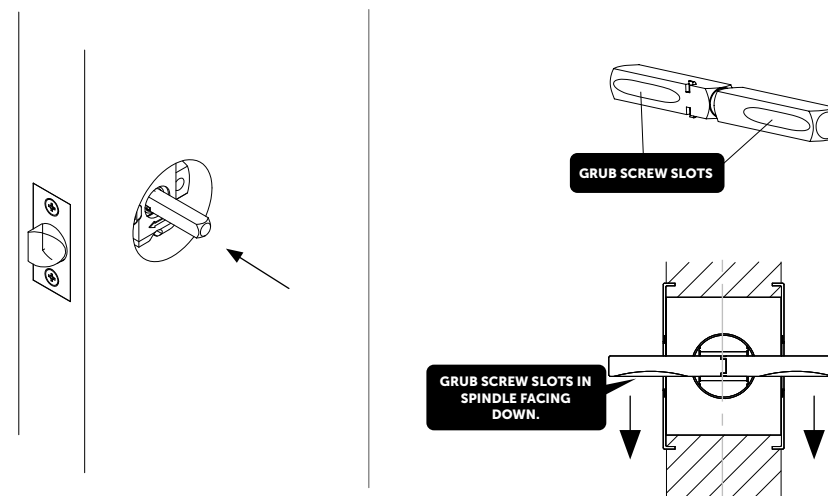
**4 REMOVE BOTH LEVER HANDLE BARS FROM THEIR AXLES.**



**5 REMOVE ROSE COVER PLATES.**



**6 ASSEMBLE THE SPINDLE THROUGH THE LATCH. ENSURE THE MIDDLE OF THE SPINDLE SITS STRAIGHT, CENTRALLY AND EQUIDISTANT IN THE LATCH.**

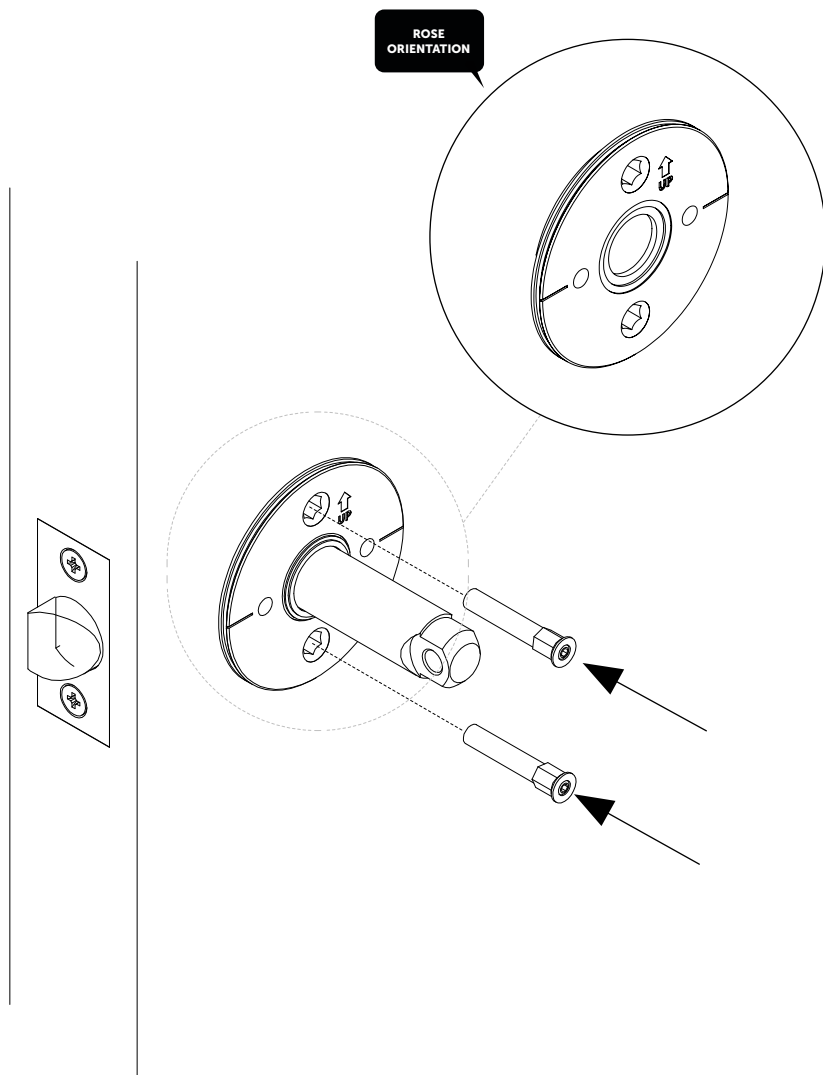


**NOTE:**

1. For information on the latch installation, scan the QR code on the latch box (if purchased).
2. Ensure the latch sits straight and true in the door recess.

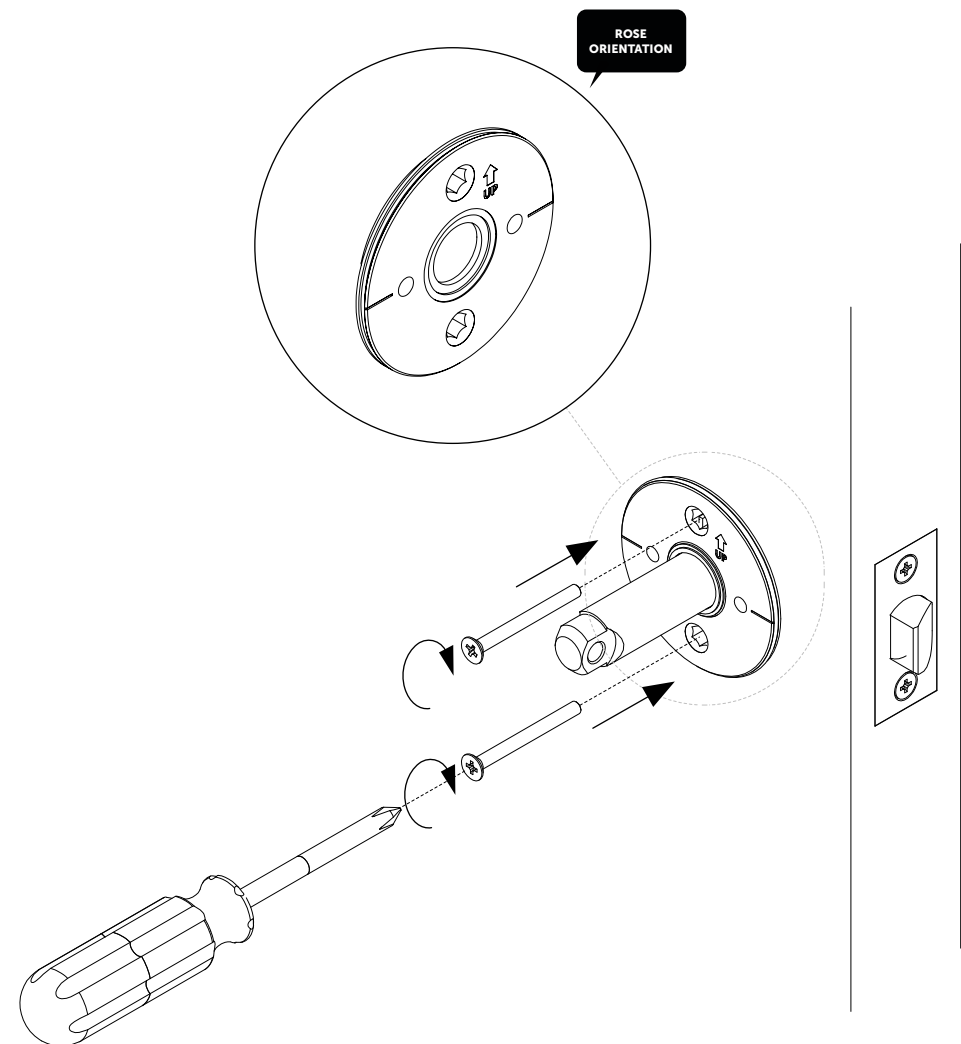
## 7 A INSTALLING THE ROSES ONTO THE DOOR:

Put the bolt bosses through the rose plate until they sit flush in the relevant recess.



## 7 B INSTALLING THE ROSES ONTO THE DOOR:

Screw the through bolts into the bolt bosses.



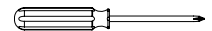
### IMPORTANT:

- Ensure the up arrow is correctly orientated on the rose.
- Put the bolt bosses through the rose plate first (step 7A).
- Then install through bolts ensuring they are room-side (step 7B).
- During assembly, tighten the top and bottom through bolts evenly.



### IMPORTANT:

- Ensure the up arrow is correctly orientated on the rose.
- Put the bolt bosses through the rose plate first (step 7A).
- Then install through bolts ensuring they are room-side (step 7B).
- During assembly, tighten the top and bottom through bolts evenly.



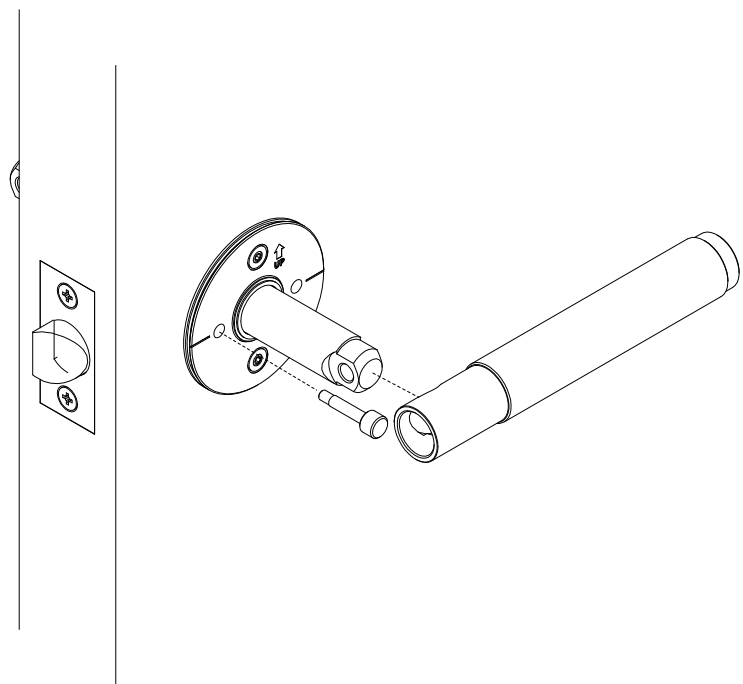
#### INSTALLATION CHECKS BEFORE FINAL ASSEMBLY:

1. Ensure the rose is flush and securely fitted to the door.
2. Screw in the privacy pin until finger tight.
3. Place handles onto axles without screwing to test the following:
  - a) The lever handles rotate equally and the latch opens fully.  
( **NOTE:** Lever handles operate independently)
  - b) The lever handles spring back to original position.
  - c) The latch returns to a closed position.
  - d) The outside lever handle doesn't move when the privacy pin is pushed in and engaged.
  - e) The door unlocks from either releasing the privacy pin or turning the inside lever handle.

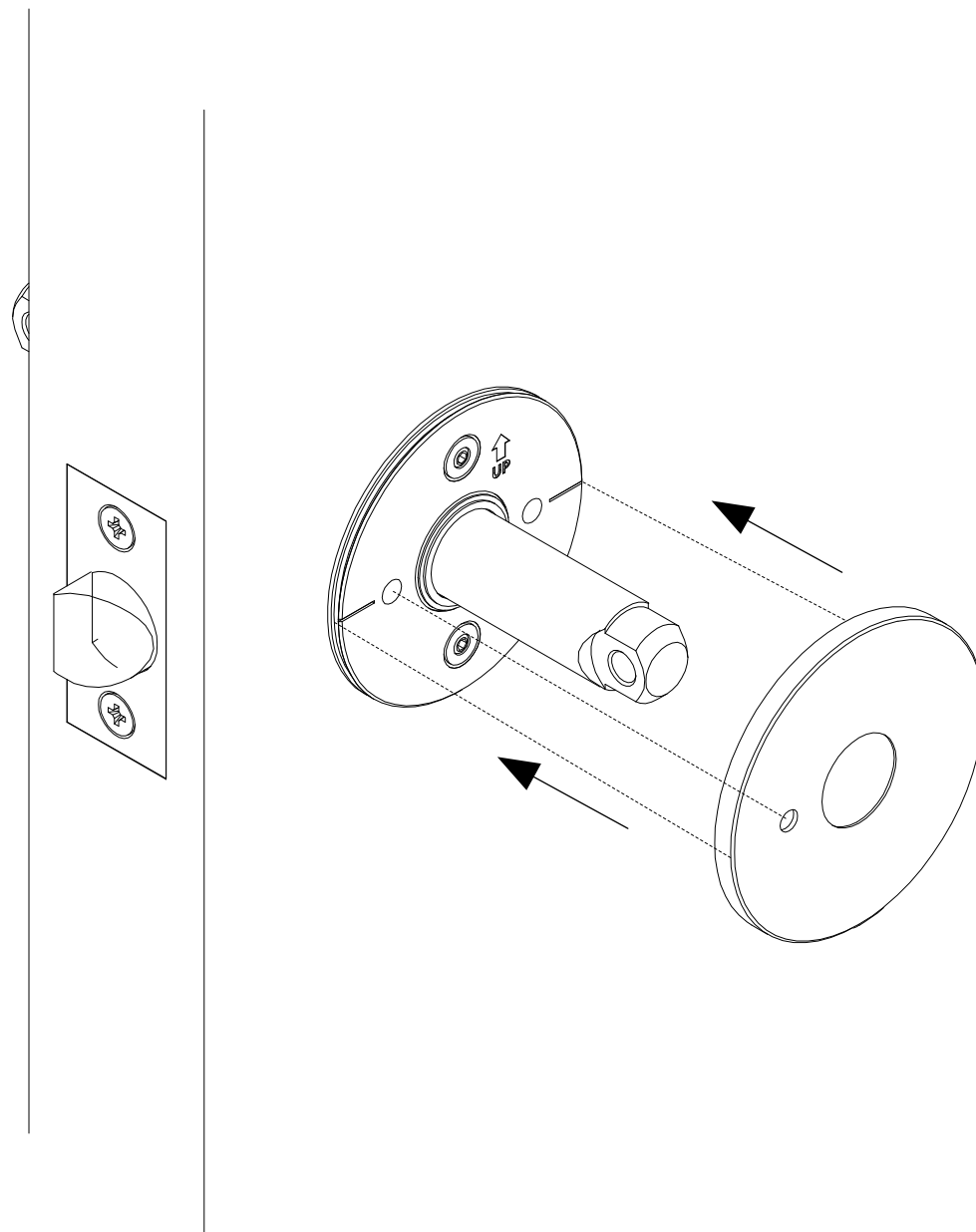


**NOTE:** If any issues arise, repeat previous installation steps 6 & 7.

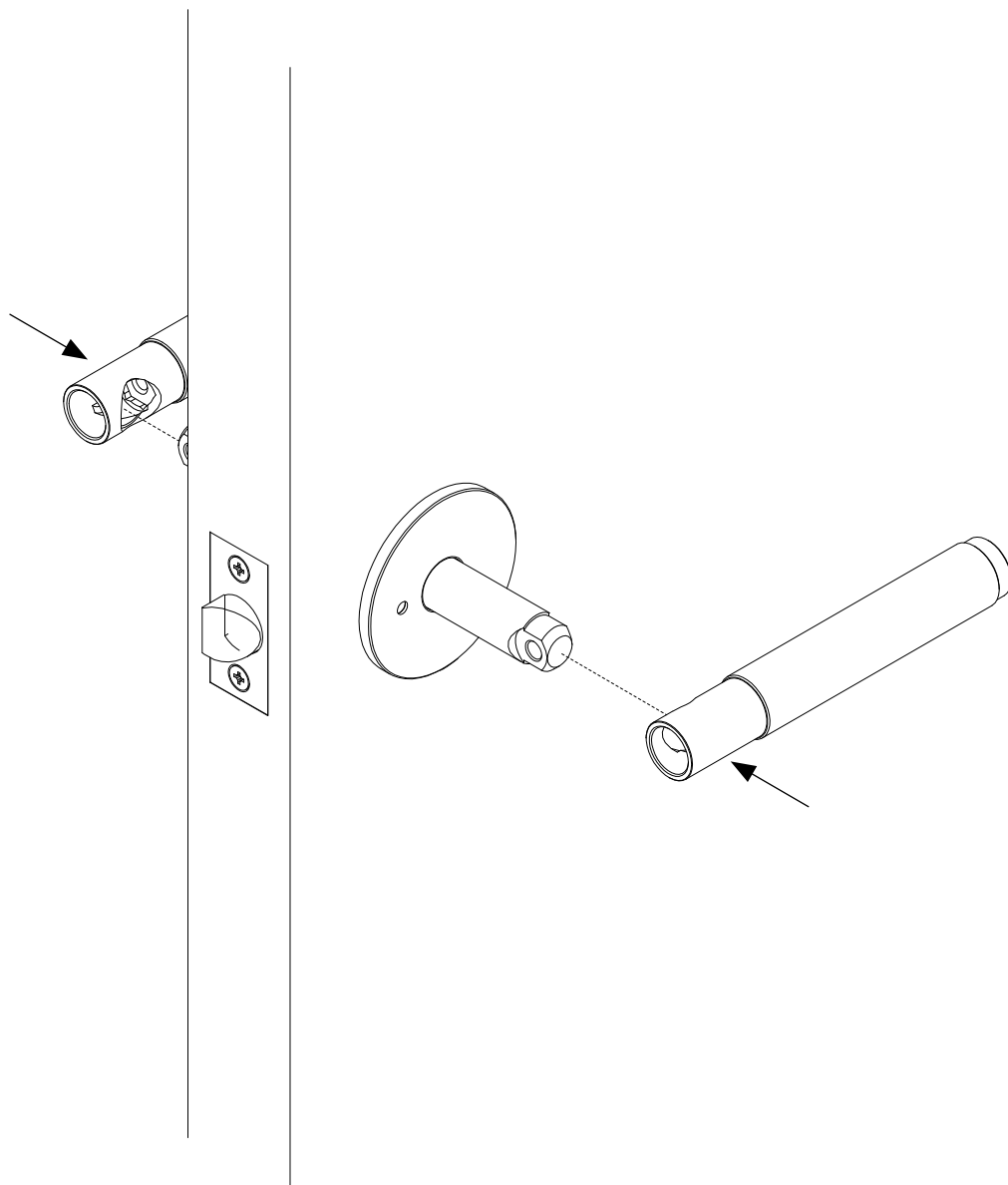
4. Remove privacy pin and handles before continuing to step 8.



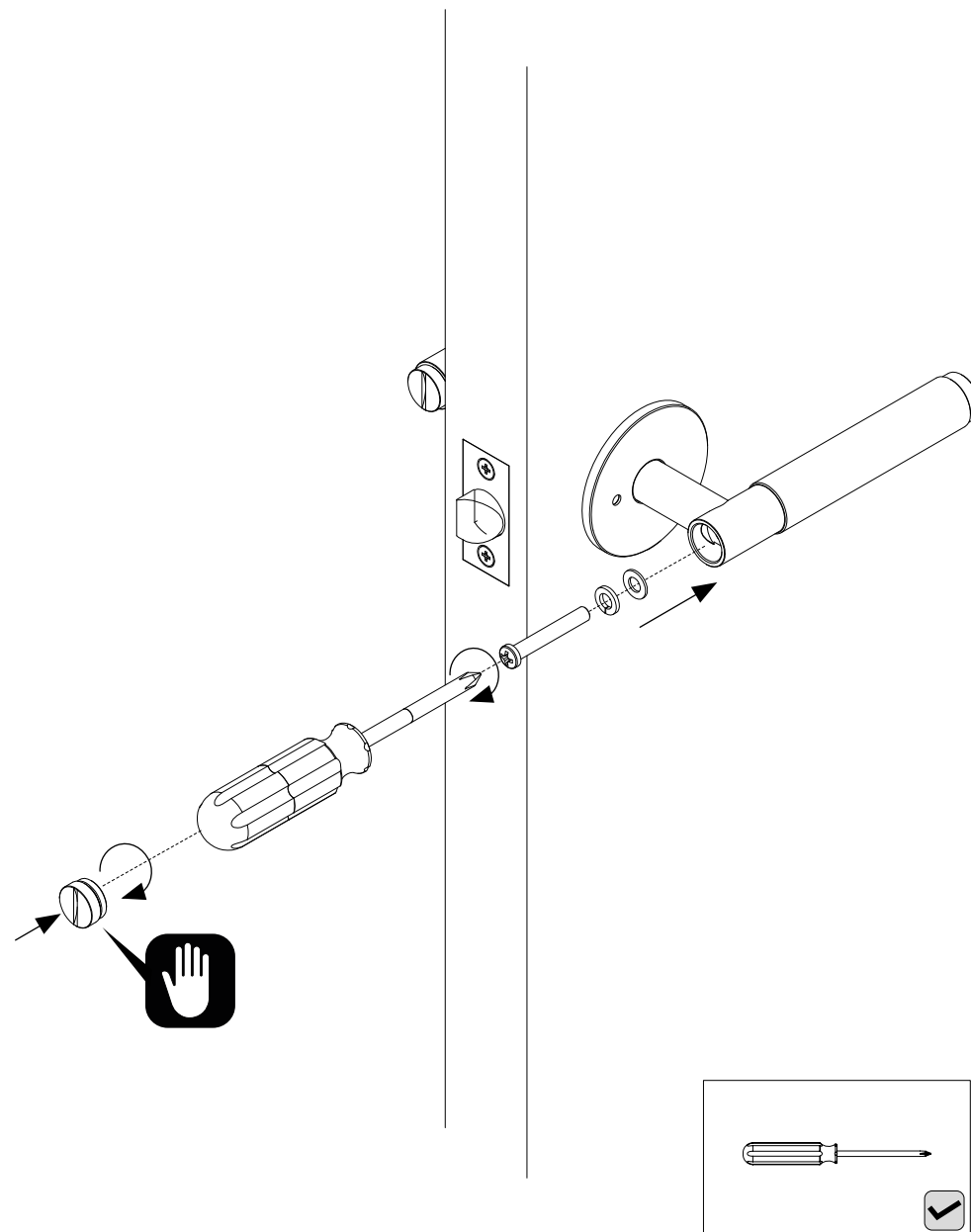
#### 8 INSTALL ROSE COVER PLATES. ENSURING THE PRIVACY PIN HOLE LINES UP WITH THE HOLE IN THE ROSE



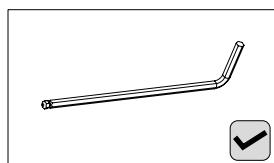
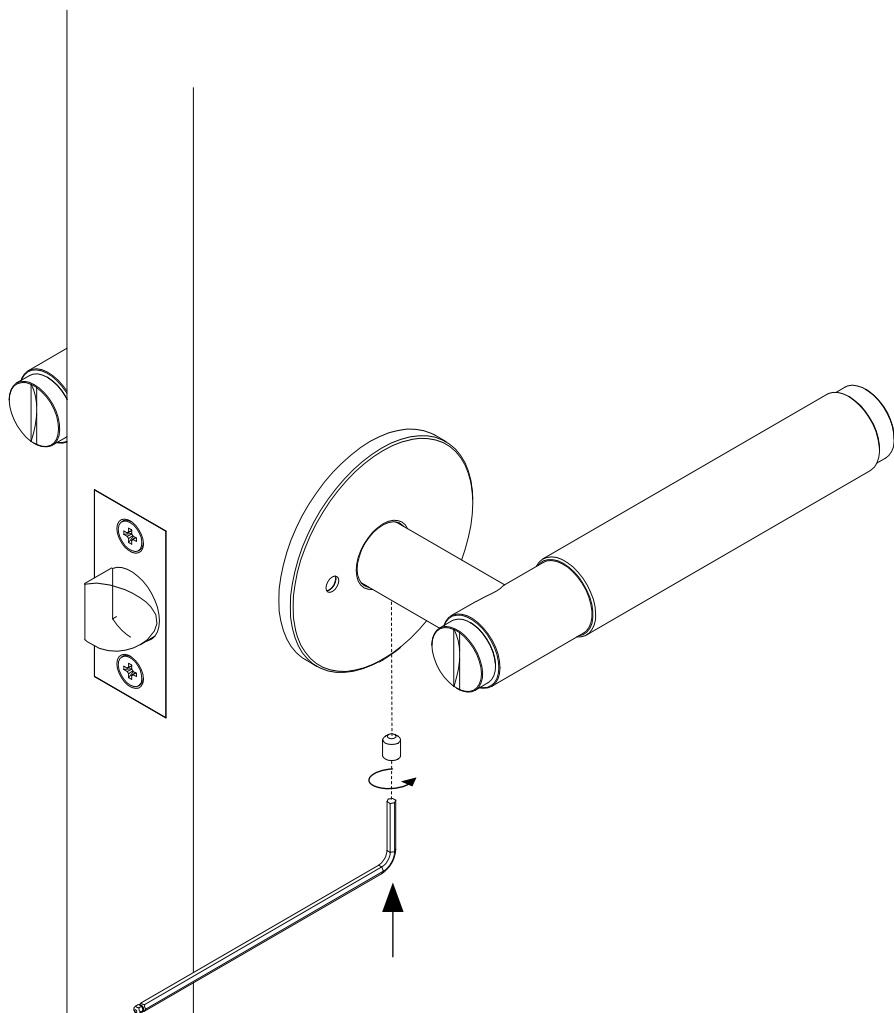
**9** INSTALL LEVER HANDLE BARS.



**10** USE CROSS HEAD SCREWDRIVER TO INSTALL SCREW AND WASHERS INSIDE LEVER HANDLE BAR AND SCREW ON END CAP UNTIL FINGER TIGHT.



**1 1** INSTALL GRUB SCREWS WITH ALLEN KEY.



**1 2** SCREW IN PRIVACY PIN UNTIL FINGER TIGHT AND STOPS ROTATING.

