

BUSTER+PUNCH

LONDON



[introducing. **EXHAUST.**]

A DISRUPTIVE RANGE
OF FUNCTIONAL
SPOTLIGHTS.



[range. **EXHAUST.**]

EXHAUST IS A RANGE OF TRAILBLAZING SPOTLIGHTS INSPIRED BY MOTORBIKE EXHAUSTS AND DESIGNED TO ELEVATE FUNCTIONAL LIGHTING.

Each spotlight is fitted with a beautifully machined, solid metal baffle which captures light and creates a delicate metallic glow, whilst also emitting a precise, non-glare, directional spotlight. The range features our new linear knurl pattern and signature torx screws, to ensure it is unmistakably Buster + Punch.

Exhaust features four new products – a fixed spotlight, an adjustable spotlight, a track spotlight and a pendant spotlight. Each spotlight comes with either a graphite or stone powder-coated metal body and a solid metal baffle and matching torx screws, finished in steel, brass, gun metal or burnt steel.



[product. **EXHAUST / SPOT.**]

[type. **ADJUSTABLE SPOTLIGHT.**]

[knurl. **LINEAR.**]

[detail. **TORX SCREW.**]

[info. **FINISH & SKU NUMBERS.**]

[finish. **BODY.**]

- | | |
|----------|-----------|
| stone | NBB-21694 |
| graphite | NBB-17693 |

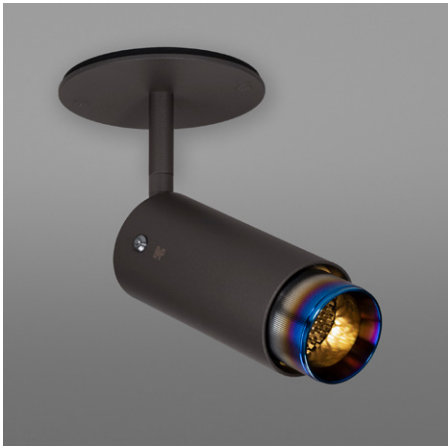
[finish. **DETAIL KIT.**]

- | | |
|-------------|-----------|
| steel | NBB-07689 |
| burnt steel | NBB-36796 |
| brass | NBB-05688 |
| gun metal | NBB-35690 |

[info. **PRODUCT.**]

An adjustable spotlight with a powder coated metal body and solid metal detailing.

The spotlight features our signature linear-knurl baffle and machined torx screws, both made from solid metal. The baffle captures light and creates a delicate metallic glow, whilst a honeycomb filter emits a precise, non-glare, directional spotlight.



[range. **EXHAUST.**]

[body finish. **STONE.**]
[baffle finish. **BRASS.**]



[detail. **BAFFLE.**]

THE BAFFLE IS WHERE THE MAGIC HAPPENS

Fashioned from a solid metal bar, the external linear-knurl pattern traps light, whilst the chamfered interior reflects light, resulting in an alluring metallic glow.

The baffle also houses a black honeycomb filter, which ensures the directional spotlight is both precise and reduces glare.



[detail. **TORX SCREW.**]

"My passion is building custom motorbikes and those bikes are kept together with surprisingly delicate torx screws. We wanted to bring this detail into all our new products and invented a new signature torx screw fitting, machined precisely from solid metal."

MASSIMO BUSTER MINALE
Founder & Creative Director

[product. **EXHAUST / SURFACE.**]

[type. **FIXED SPOTLIGHT.**]

[knurl. **LINEAR.**]

[detail. **TORX SCREW.**]

[info. **FINISH & SKU NUMBERS.**]

[finish. **BODY.**]

stone	NBB-21702
graphite	NBB-17701

[finish. **DETAIL KIT.**]

steel	NBB-07689
burnt steel	NBB-36796
brass	NBB-05688
gun metal	NBB-35690

[info. **PRODUCT.**]

A surface mounted, fixed spotlight with a powder coated metal body and solid metal detailing.

The spotlight features our signature linear-knurl baffle and machined torx screws, both made from solid stainless steel. The baffle captures light and creates a delicate metallic glow, whilst a honeycomb filter emits a precise, non-glare, directional spotlight.



[range. **EXHAUST.**]

10

[body. **STONE.**]

[detail kit. **BRASS.**]



11

[product. **EXHAUST / TRACK.**]

[type. **TRACK SPOTLIGHT.**]

[knurl. **LINEAR.**]

[detail. **TORX SCREW.**]

[info. **FINISH & SKU NUMBERS.**]

[finish. **BODY.**]

- | | |
|----------|-----------|
| stone | NSH-21706 |
| graphite | NSH-17705 |

[finish. **DETAIL KIT.**]

- | | |
|-------------|-----------|
| steel | NBB-07689 |
| burnt steel | NBB-36796 |
| brass | NBB-05688 |
| gun metal | NBB-35690 |

[info. **PRODUCT.**]

A track spotlight with a powder coated metal body and solid metal detailing. Compatible with Halo track.

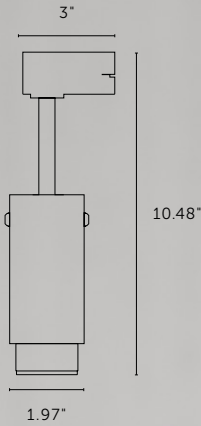
The spotlight features our signature linear-knurl baffle and machined torx screws, both made from solid metal. The baffle captures light and creates a delicate metallic glow, whilst a honeycomb filter emits a precise, non-glare, directional spotlight.




[range. **EXHAUST.**]



[body. **STONE.**]
[detail kit. **GUN METAL.**]





"Exhaust finally puts functional lighting back in the spotlight. All too often forgotten as background, we wanted to create a compelling range of decorative task lights that would fit seamlessly into any home or hospitality space, whilst ensuring you never forget them - much like the roar of a motorbike exhaust"

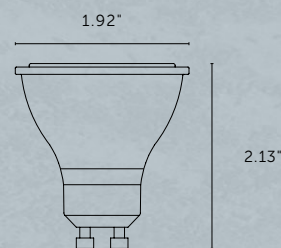
MASSIMO BUSTER MINALE
Founder & Creative Director

[bulb. **LED GU10.**]

EXHAUST IS POWERED BY NEW GENERATION LED GU10 BULBS*

They use up to 90% less energy than standard halogen bulbs. Our high-performance LED bulbs are designed to ensure minimal heat emission whilst maintaining excellent colour rendering.

**Bulbs sold separately*



7W GU10 LED
110-120V
600 LUMEN
DIMMABLE / 3000K
CRI 80 / 36D BEAM



[product. **EXHAUST / PENDANT.**]

[type. **PENDANT SPOTLIGHT.**]

[knurl. **LINEAR.**]

[detail. **TORX SCREW.**]

[info. **FINISH & SKU NUMBERS.**]

[finish. **BODY.**]

stone	NBB-21698
graphite	NBB-17697

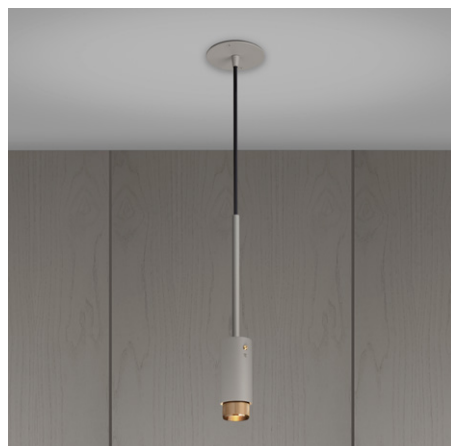
[finish. **DETAIL KIT.**]

steel	NBB-07689
burnt steel	NBB-36796
brass	NBB-05688
gun metal	NBB-35690

[info. **PRODUCT.**]

A pendant spotlight with a powder coated metal body and solid metal detailing.

The pendant features our signature linear-knurl baffle and machined torx screws, both made from solid metal. The baffle captures light and creates a delicate metallic glow, whilst a honeycomb filter emits a precise, non-glare, directional spotlight.



[range. **EXHAUST.**]

18

[body finish. **GRAPHITE.**]

[baffle finish. **BRASS.**]



19

[body. **GRAPHITE.**]



[body. **GRAPHITE.**]



[body. **STONE.**]



[body. **STONE.**]



[detail kit. **STEEL.**]

[detail kit. **BURNT STEEL.**]

[detail kit. **BRASS.**]

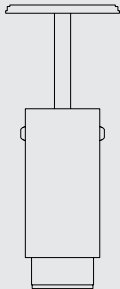
[detail kit. **GUN METAL.**]

[range. **EXHAUST.**]*

*exhaust range fits GU10 bulbs and cULus certified.

[type. **ADJUSTABLE SPOTLIGHT.**]

[info. **FINISH & SKU NUMBERS.**]



[finish. **BODY.**]

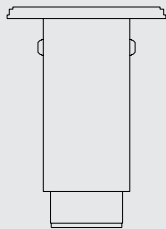
- stone NBB-21694
- graphite NBB-17693

[finish. **DETAIL KIT.**]

- steel NBB-07689
- burnt steel NBB-36796
- brass NBB-05688
- gun metal NBB-35690

[type. **FIXED SPOTLIGHT.**]

[info. **FINISH & SKU NUMBERS.**]



[finish. **BODY.**]

- stone NBB-21702
- graphite NBB-17701

[finish. **DETAIL KIT.**]

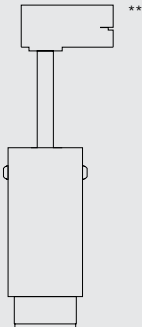
- steel NBB-07689
- burnt steel NBB-36796
- brass NBB-05688
- gun metal NBB-35690

[type. **TRACK SPOTLIGHT.**]

[info. **FINISH & SKU NUMBERS.**]

** Single circuit H-style adapter. Compatible with Halo track.

Please refer to tech spec for full list of compatible track fittings.



[finish. **BODY.**]

- stone NSH-21706
- graphite NSH-17705

[finish. **DETAIL KIT.**]

- steel NBB-07689
- burnt steel NBB-36796
- brass NBB-05688
- gun metal NBB-35690

[type. **PENDANT SPOTLIGHT.**]



[info. **FINISH & SKU NUMBERS.**]

[finish. **BODY.**]

- stone NBB-21698
- graphite NBB-17697

[finish. **DETAIL KIT.**]

- steel NBB-07689
- burnt steel NBB-36796
- brass NBB-05688
- gun metal NBB-35690

BUSTER + PUNCH / LONDON
28 Cowper Street
Shoreditch, London, EC2A 4AS
United Kingdom
+44 (0)20 7407 0888

BUSTER + PUNCH / UK
29 st. Peters Street
Stamford, PE9 2PF
United Kingdom
+44 (0)20 7407 0888

BUSTER + PUNCH / STOCKHOLM
Artillerigatan 25
114 45 Stockholm
Sweden
+46 (0)8 588 395 50

BUSTER + PUNCH / LOS ANGELES
10844 Burbank Blvd.
North Hollywood, ca 91601
United States
+1 (818) 392-3827

PRESS ENQUIRIES

Global Press: press@busterandpunch.com
North American Press: press@busterandpunch.us

SALES ENQUIRIES

Global Sales: sales@busterandpunch.com
North American Sales: sales@busterandpunch.us

INFORMATION

info@busterandpunch.com

FOLLOW US

Instagram: [@busterandpunch](https://www.instagram.com/busterandpunch)
Facebook: [busterandpunch](https://www.facebook.com/busterandpunch)

[end. **ORDINARY.**]



BUSTERANDPUNCH.COM