



HALO 10

SCONCES WALL



location:
DAMP

SPECIFICATIONS:

DESCRIPTION

Wall-mounted sconce.

LAMPING

LED: 7W integrated source, 120V, dimmable, 85+ CRI, 3000°K CCT, 600 lumens, 30,000 hours.

CONSTRUCTION

Aluminum faceplate and frosted acrylic side diffuser.

METAL FINISH

Fixture shall be finished in Black, Bronze or White.

MOUNTING

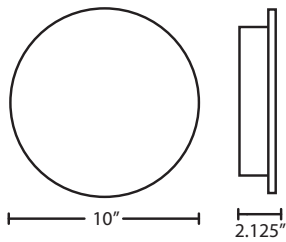
Installs directly to a 4" octagonal outlet box. Wall-mount only.

LABELS

UL or ETL Listed. Suitable for Damp Locations (interior use only).

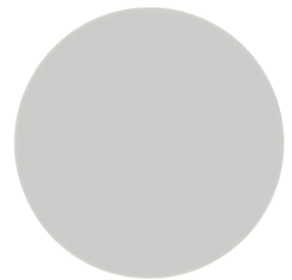
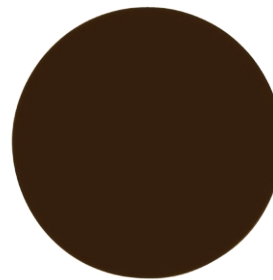


BLACK



BRONZE

WHITE



ORDERING:

| FIXTURE | LAMP OPTIONS | METAL FINISH |
|-----------------------|---------------------------------|--|
| HALO10 Halo 10 | LED 7W LED 600 lumens | BK Black BR Bronze WH White |

Ex. HALO10-LED-BK
Halo 10 Wall, Black Finish

Project Information:

All dimensions provided are nominal.
Allowance must be made for dimensional tolerance in handcrafted glasses.

REV 1/17