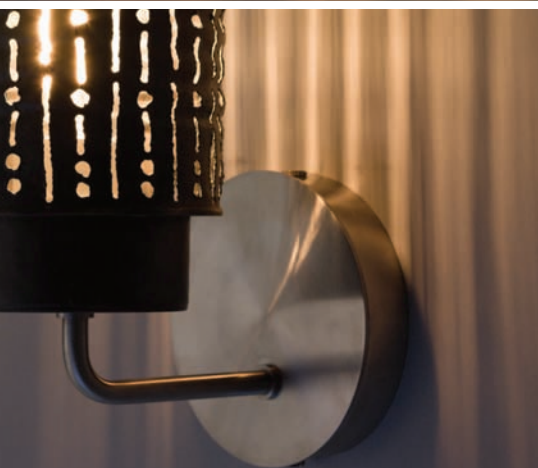


SECOLA SCONCE



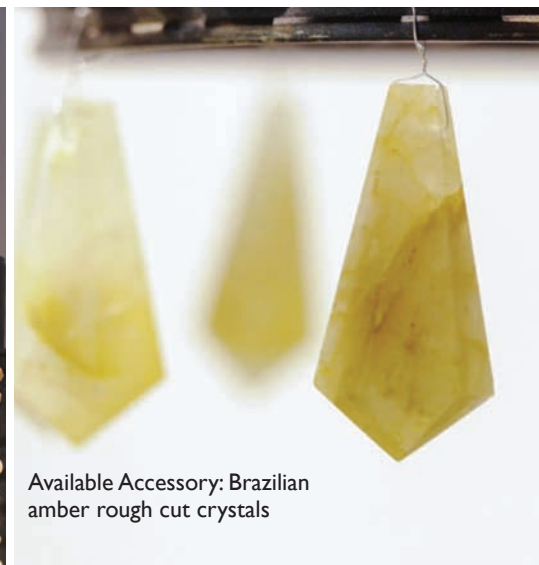
shown with
craftsman hardware



shown with
cylindrical stainless hardware



shown with
cylindrical bronze hardware



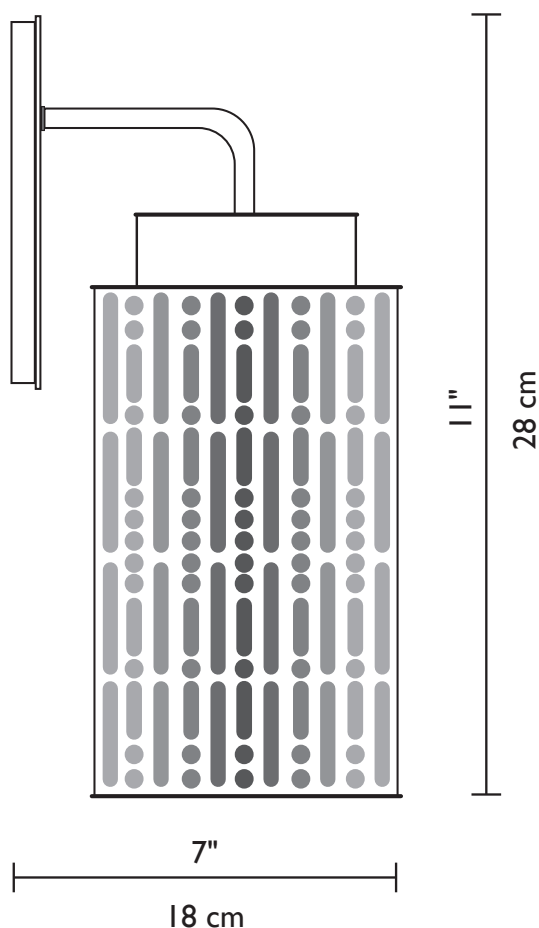
Available Accessory: Brazilian
amber rough cut crystals

SECOLA SCONCE

What happens when you mix recycled materials with unique, contemporary design? You get the Secola sconce collection. Hand-created in Southern California by a acetylene torch artist, ordinary, recycled tin becomes extraordinary art illuminated by nostalgic, carbon filament lamps. The Secola is both Earth-friendly and stylish.

NEW Make your Secola elegant with genuine Brazilian amber rough cut crystals.

Technical Information

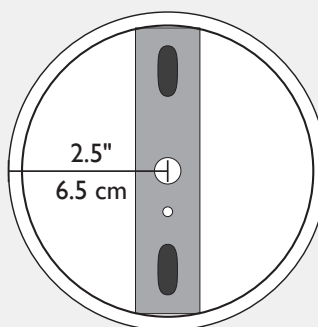


Mounting Information

CYLINDER BACK PLATE FINISHES

Bronze
Stainless

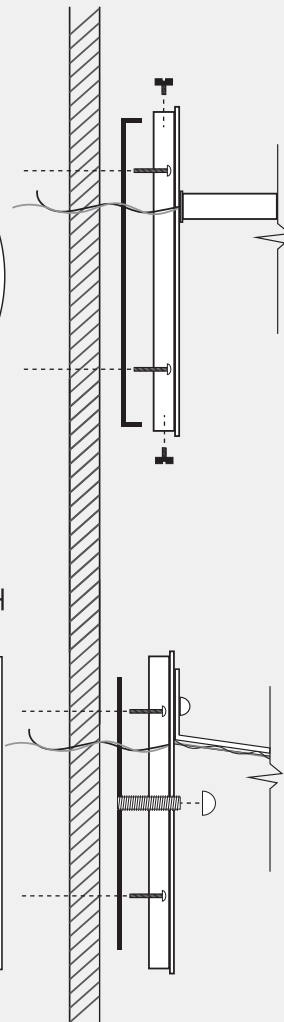
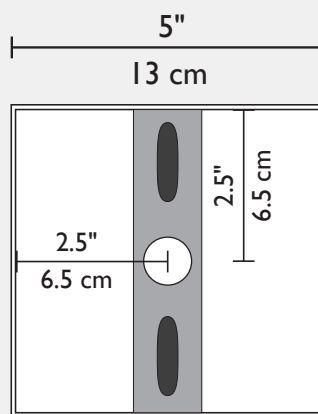
4.5"
12 cm



CRAFTSMAN BACK PLATE FINISHES

Blacksmith Iron

5"
13 cm



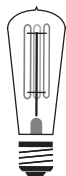
Visit our
showroom at the
Dallas Trade Mart

Made in USA ★

Incandescent Source (Included)

1 x 60w (Max)
Medium Base

60w Nostalgic, Edison-style
Carbon Filament Bulb



Dry Location



1881 Industrial Drive
Libertyville, IL 60048
Tele: 847.680.9043
Fax: 847.680.8140
www.wptdesign.com

Fall 2012