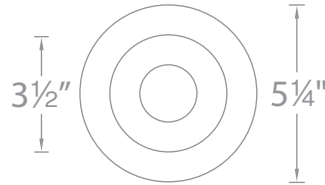
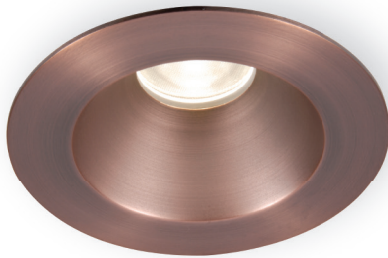


HR3LEDT218PN

3.5" Tesla™ Pro LED Shower Trim

WAC LIGHTING

Responsible Lighting®



Fixture Type:

Catalog Number:

Project:

Location:

PRODUCT DESCRIPTION

Minimum profile, round shower trim with interior open reflector.

FEATURES

- 3.5" aperture
- Energy Star® rated
- Wet location listed
- 30° visual cutoff angle for glare control
- 5 year WAC Lighting product warranty

SPECIFICATIONS

Construction: Durable die-cast aluminum construction with borosilicate glass lens. Extruded aluminum heat sink.

Light Source: Utilizes one 22W LED, CRI: 85 & 90+

Dimming: 0-10V Dimming: 100%-10%
ELV Dimming: 100%-15% (120V only)

Mounting: Three heavy gauge retention clips hold trim firmly to housing.

Finish: White (WT) powder coat paint and electroplated Brushed Nickel (BN) and Copper Bronze (CB).

Standards: ETL & cETL Listed. See table below for Energy Star® qualifying products.

TRIMS

Model#	Beam	Color Temp	CRI	Lumens	CBCP	Energy Star®	Finish
HR3LEDT218PN <i>Shower Light</i> <i>Wet Location Listed</i>	30°	827 2700K	85	1100	2274	Yes	BN <i>Brushed Nickel</i> CB <i>Copper Bronze</i> WT <i>White</i>
		927 2700K	90	920	1896	Yes	
		830 3000K	85	1135	2316	Yes	
		930 3000K	90	1040	2153	Yes	
		835 3500K	85	1240	2569	Yes	
		840 4000K	85	1256	2547	Yes	

HR3LEDT218PN

Example: HR3LEDT218PN927BN

COMPATIBLE HOUSINGS *See individual housing spec sheets for complete information.*

Model	Input	Notes
HR-3LED-H18D1-ICA	120V -277V	Ceiling thickness: 1/2" - 3/4"
HR-3LED-H18D1-ICAC		
HR-3LED-H18D-ICA	120V -277V	Ceiling thickness: 1/2" - 3/4"
HR-3LED-H18D-ICAC		
HR-3LED-H18D-EMICA		
HR-3LED-H18D-A	120V -277V	Requires 3" of clearance from insulation on all sides
HR-3LED-R18D-A		Ceiling thickness: 1/2" - 1"

REPLACEMENT MODULES

Reflectors

Narrow Flood
Flood

SL-REF-BL10-1-N
SL-REF-BL10-1-F

LED

2700K	85 CRI	BXRC-27E1000-B-03
2700K	90 CRI	BXRC-27G1000-B-03
3000K	85 CRI	BXRC-30E1000-B-03
3000K	90 CRI	BXRC-30G1000-B-03
3500K	85 CRI	BXRC-35E1000-B-03
4000K	85 CRI	BXRC-40E1000-B-03

waclighting.com
Phone (800) 526.2588
Fax (800) 526.2585

Headquarters/Eastern Distribution Center
44 Harbor Park Drive
Port Washington, NY 11050

Central Distribution Center
1600 Distribution Ct
Lithia Springs, GA 30122

Western Distribution Center
1750 Archibald Avenue
Ontario, CA 91760