

UTTERMOST

# ASSEMBLY INSTRUCTIONS

STYLE# 28151-1

**Careful unpack all lamp parts from the carton.**

1. Take the lamp carefully out of the Carton, and place it on a flat surface.

2. Thread **Part A** into the **Base** by turning **Part A** clockwise to tighten until snug.

3. Thread **Part B** into **Part A** by turning **Part B** clockwise to tighten until snug.

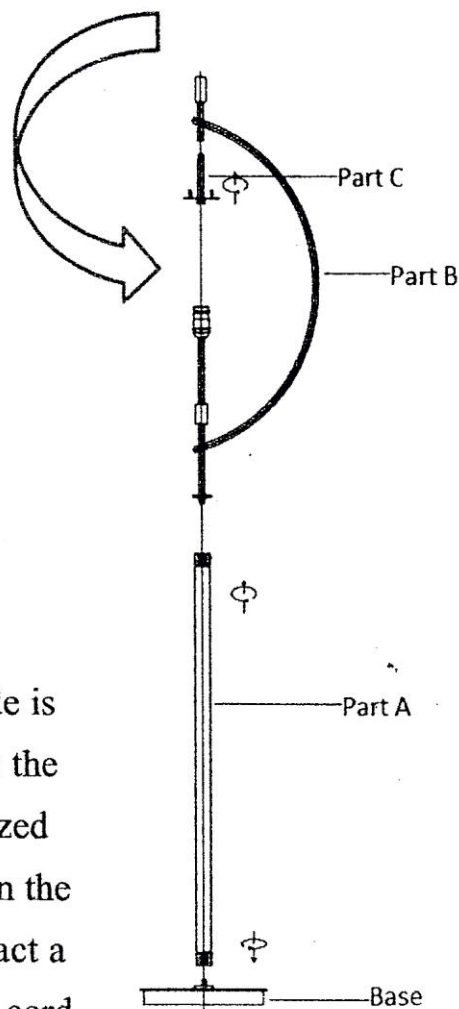
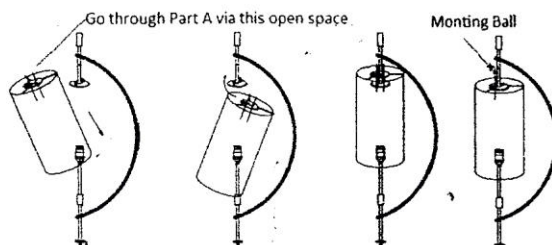
4. Thread **Part C** into **Part B** by turning **Part C** clockwise to tighten until snug.

5. Bring the **Shade** to right under the **Part C** set.

Line the **Shade** up to go through the **Part C** set, but make sure via the open space facing slot on the spider washer. Thread the **Mounting Ball** on the top of **Part C** set to secure them.

Hand tighten until snug.

6. Install correct Bulbs referring to fixture markings and /or labels for maximum wattage. (Not Included)



28151-1

## IMPORTANT SAFETY INSTRUCTIONS

This portable lamp has a polarized plug ( one blade is wider than the other ) as a safety feature to reduce the risk of electric shock. This plug will fit in a polarized outlet only one way. If the plug does not fit fully in the outlet, reverse the plug. If it still does not fit, contact a qualified electrician. Never use with an extension cord unless plug can be fully inserted. Do not attempt to defeat this safety feature.