



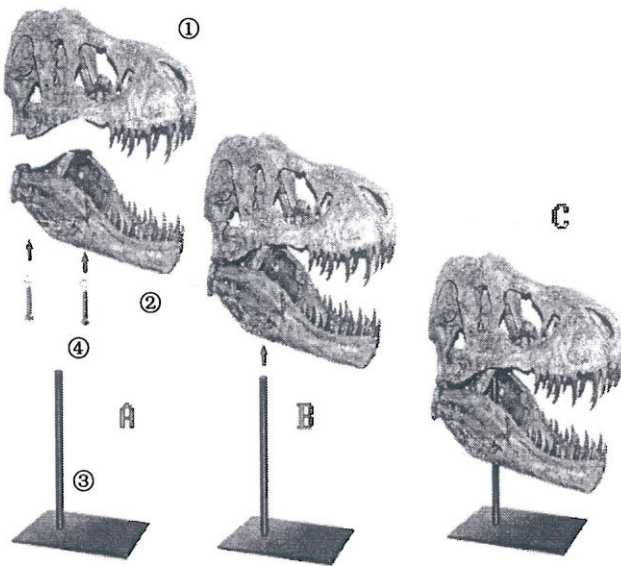
UTTERMOST

Assembly Instruction

ITEM#19948

PARTS LIST

①	UPPER PART	1PC
②	LOWER PART	1PC
③	METAL BASE	1PC
④	SCREW	2PCS



1. Take the parts carefully out of the carton, and then place them on a flat surface, make sure that the parts will not be damaged.

2. For this item, there are two pieces that need to be assembled.

3. Screw the upper part ① with the lower part ② to be a whole dinosaur head, and tighten the screws until secure. As Step A.

4. And then screw the metal base ③ with dinosaur head. As Step B.

5. Make sure the dinosaur is assembled in right position. As Step C.

Pls be careful about the dinosaur teeth, and use gloves when touching the teeth.

To clean, wipe with soft cloth.

PO BOX 558/3325 GRASSY HILL RD. ROCKY MOUNT, VIRGINIA 24151

www.uttermost.com