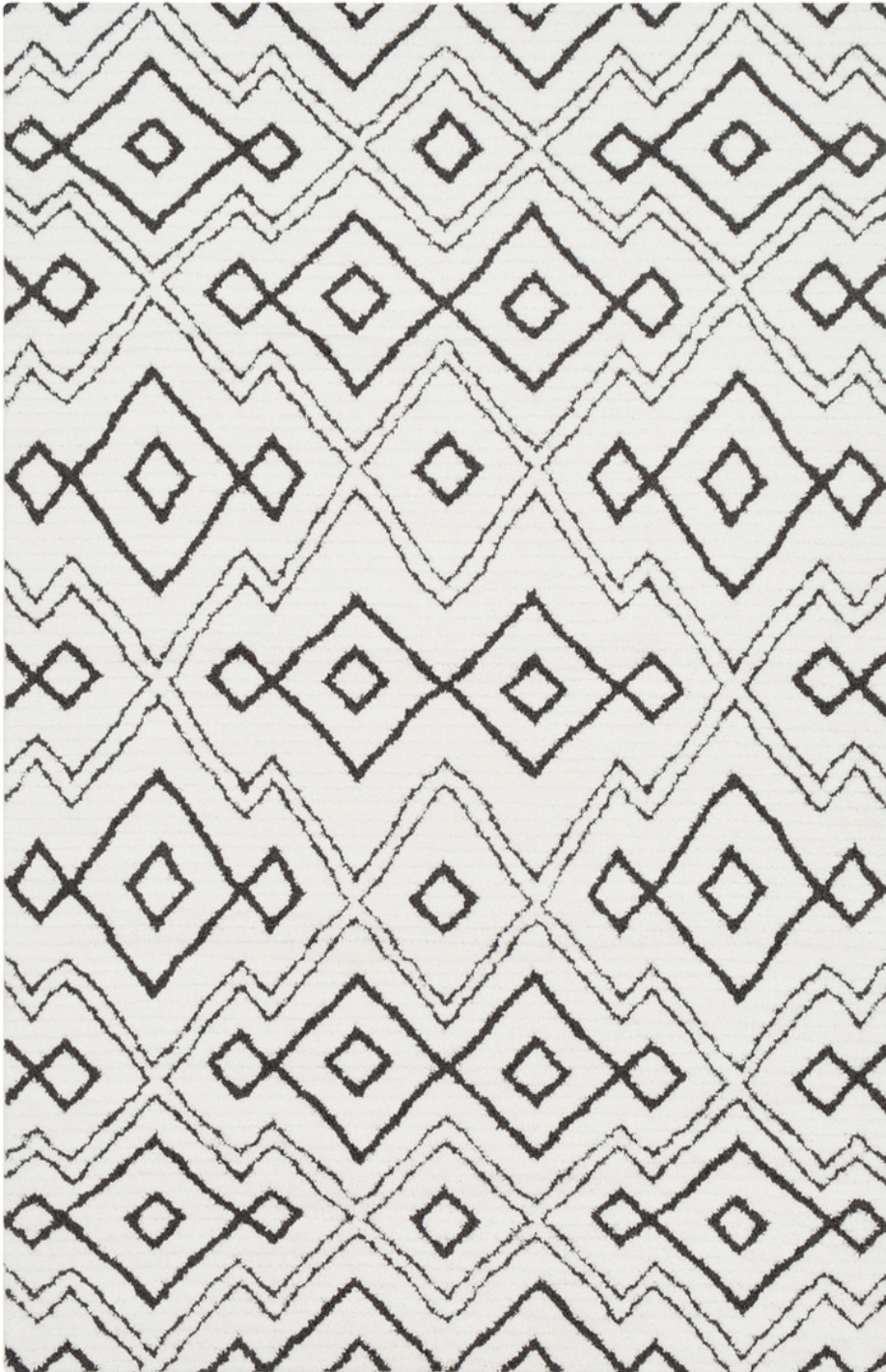


Moroccan Shag MCS-2308



CORNER DETAIL



DETAILS

65% Polypropylene, 35% Polyester
Machine Woven
High Pile/Low Pile, 0.59"
Made in Turkey

SIZES AVAILABLE

2' x 3'
5'3" x 7'3"
6'7" x 9'6"
7'10" x 10'3"
2'7" x 7'3"
18" Sample

