

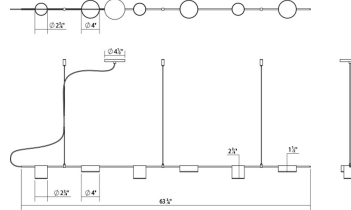
Project:

# CounterpointLED Pendant Spec Sheet

SKU: 2886.25    Learn more at:  
<https://sonnemanlight.com/counterpoint-led-pendant>

Description: Flat disc and deep cylindrical forms, of different visual weights in juxtaposition to each other, are counterbalanced on offset slender arms in a rotating system of mass. Dramatically powerful in its simplicity, Counterpoint delivers bright LED luminance downward, with a subtly lit edge from the solid acrylic lenses of its cylindrical heads. Our [Optional Mini Box Canopy](#) is also available for the Counterpoint LED Pendant.

Type #:



## Dimensions

Height: 3"  
Width: 63.75"  
Length: 4"  
Diameter: 45"  
Canopy/Backplate/Base: 4.5"  
Size: 6-Light Linear  
Canopy/Backplate/Base Height: 0.5

## Electrical Specs

Bulb(s) Included?: Yes  
Bulb 1 Type: Integral LED  
Bulb Quantity: 6  
Input Voltage: 120VAC  
Wattage: 16  
Initial Lumens: 1780  
Delivered Lumens: 1050  
Color Temperature: 3000K  
CRI: 90  
Power Supply Type: Driver  
Power Supply Quantity: 1  
Power Supply Location: Outlet Box  
Dimming Type: TRIAC/ELV  
Bulb Max Wattage: 16

## Installation

Installation: Licensed electrician required  
Sloped Ceiling Compatible?: Adapter Available

## Shipping

Carton 1 L x W x H: 69" X 10" X 8"  
Carton 1 Gross Weight: 9 LBS

## Shade

Shade 1 Material: Aluminum w/Optical Acrylic  
Shade 2 Material: Aluminum w/Optical Acrylic

## Available Finishes

Available Finishes: Bright Satin Aluminum (.16), Satin Black (.25), Satin White (.03)

## General Listings

Features: Damp Rated  
Certification: C-ETL-US  
Color/Finish: Satin Black (.25)  
Dark Sky Friendly: N