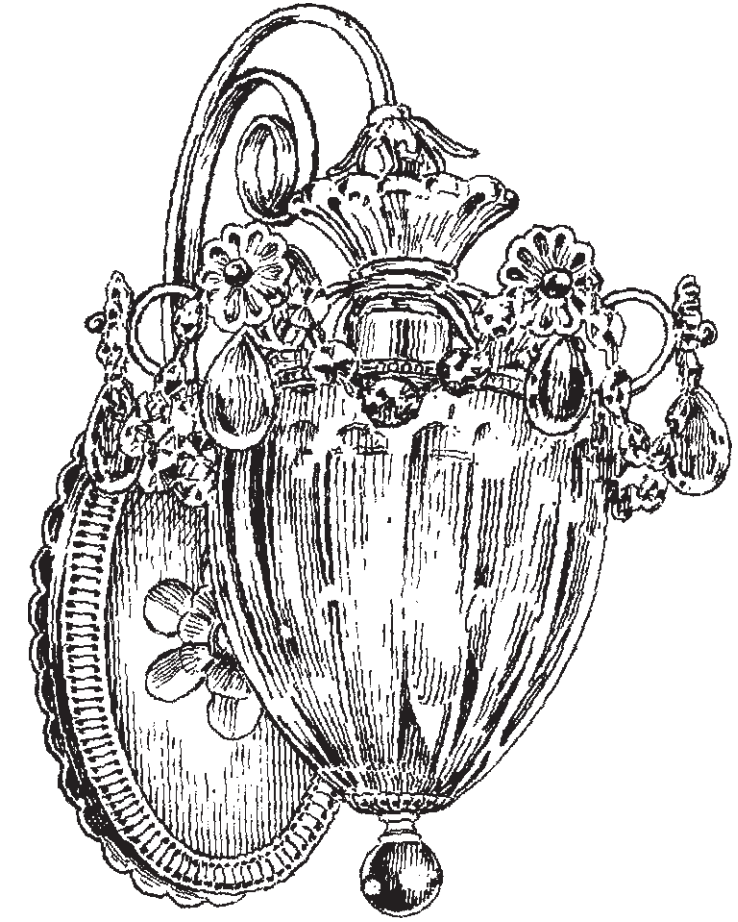


BAGATELLE 1240- _ _ _

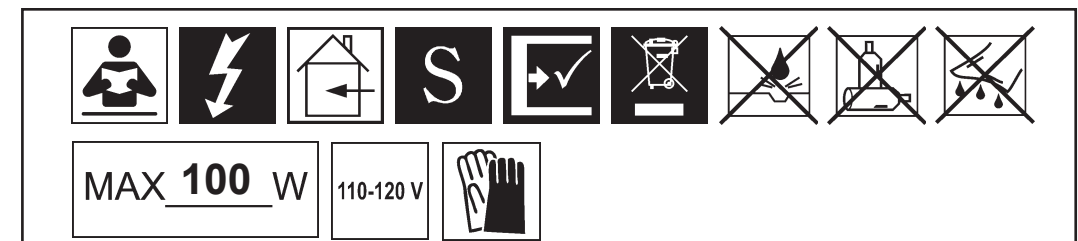


1 Light
Diameter: 8"
Body Length: 13"
Extension: 10-1/2"
Hanging Weight: 5 lbs.

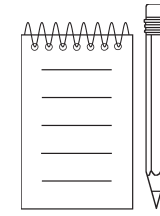
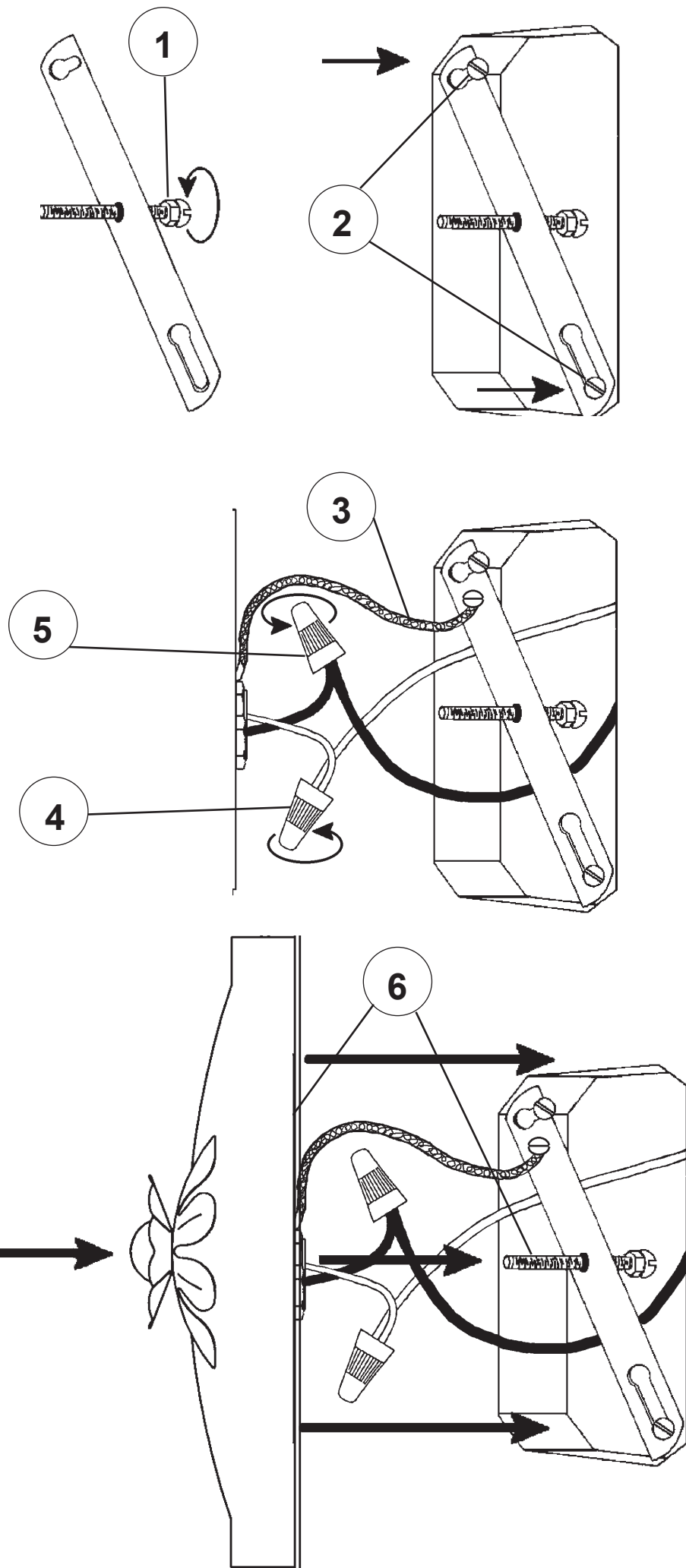
THIS DESIGN IS THE PROPRIETARY
TRADE DRESS/TRADEMARK OF
W SCHONBEK LLC.

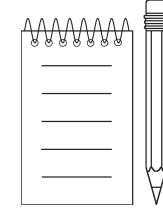
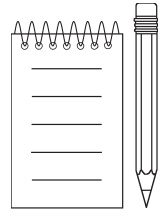
 **SCHONBEK** | 1870

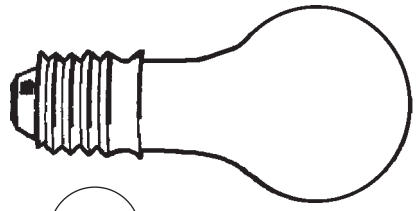
 **SCHONBEK** | 1870



All electrical components must be installed by a licensed electrician in accordance with the National Electric Code and the appropriate local electrical codes.

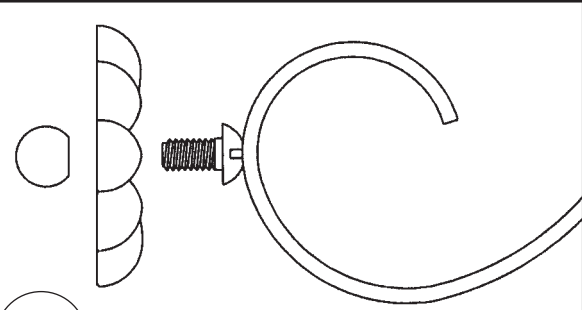






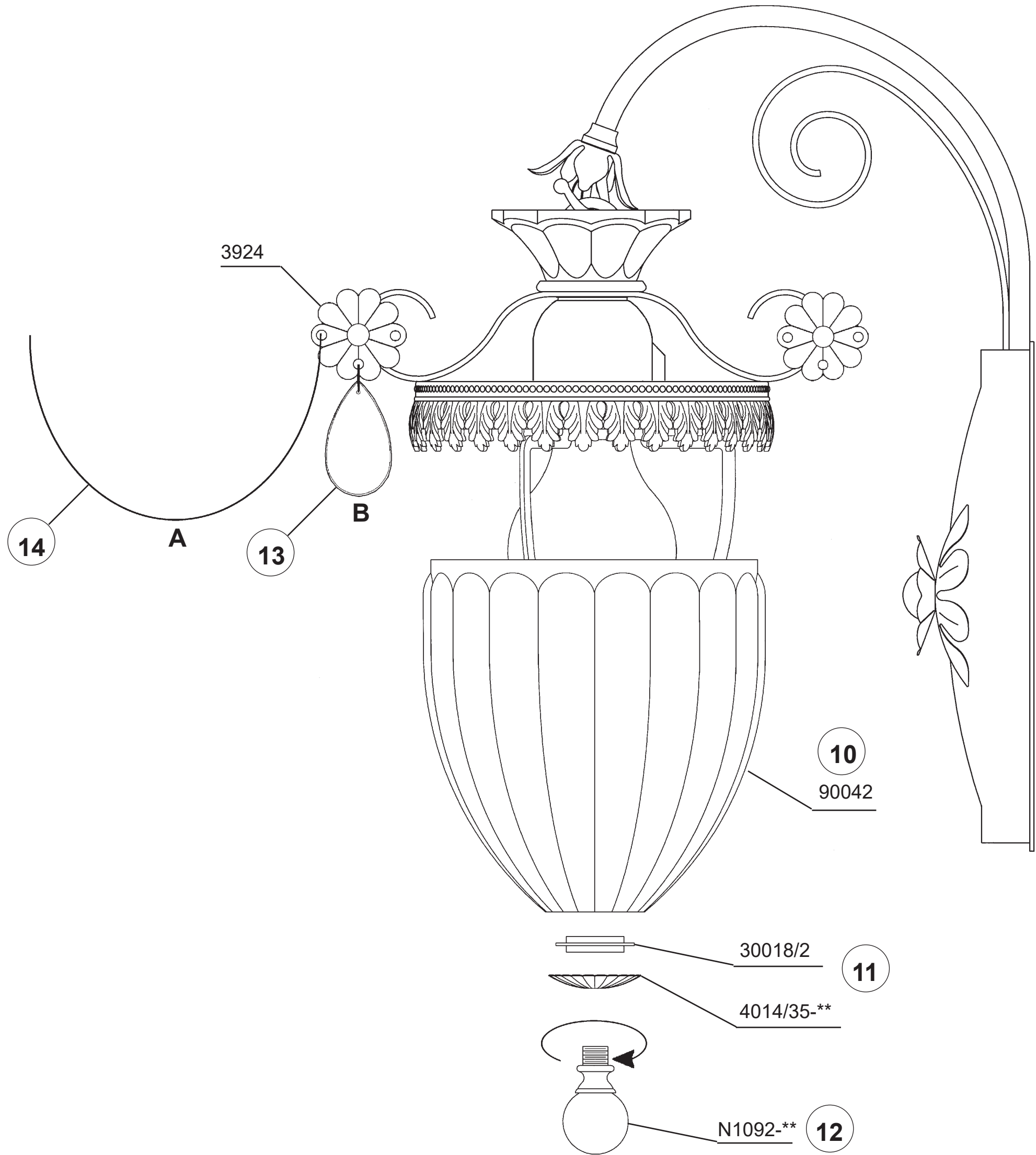
8

You will need 1 - Type A19
40 Watts Recommended
100 Watts Max



9

Slide rosettes with flat side facing towards you onto the screws and secure with balls provided.



14

A

13

B

3924

10

90042

30018/2

11

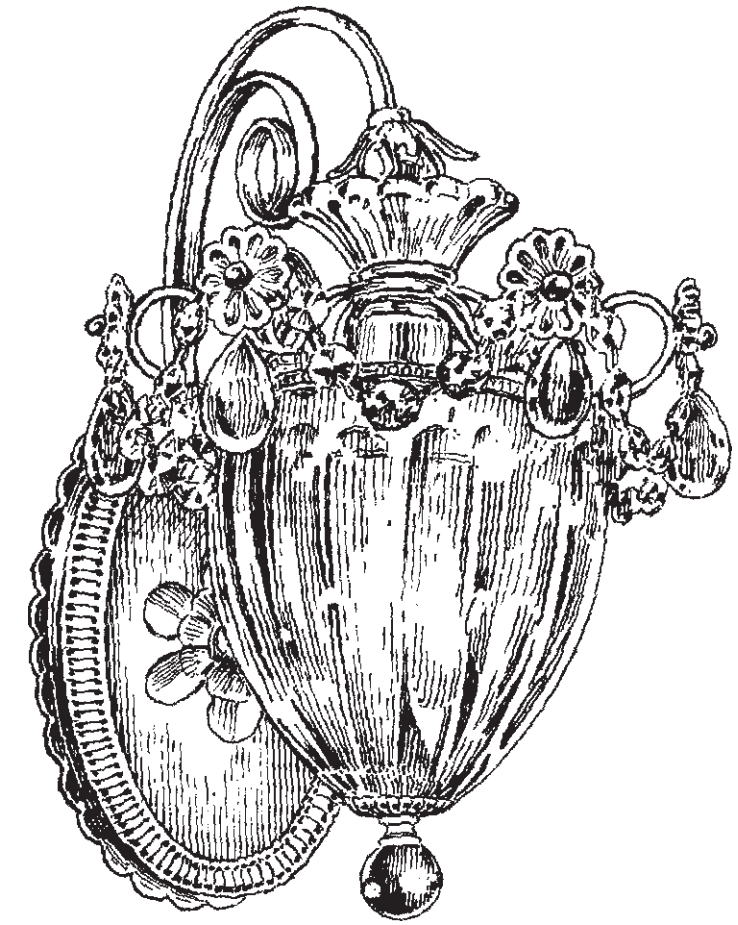
4014/35-**

N1092-**

12



BAGATELLE 1240-__ __R

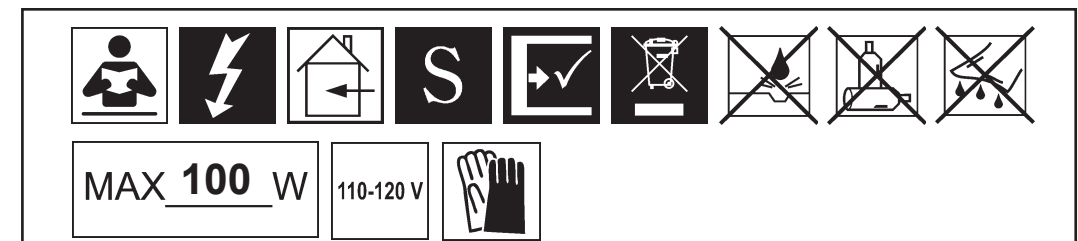


1 Light
Diameter: 8"
Body Length: 13"
Extension: 10-1/2"
Hanging Weight: 5 lbs.

THIS DESIGN IS THE PROPRIETARY
TRADE DRESS/TRADEMARK OF
W SCHONBEK LLC.

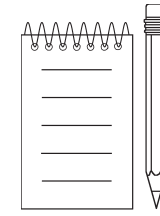
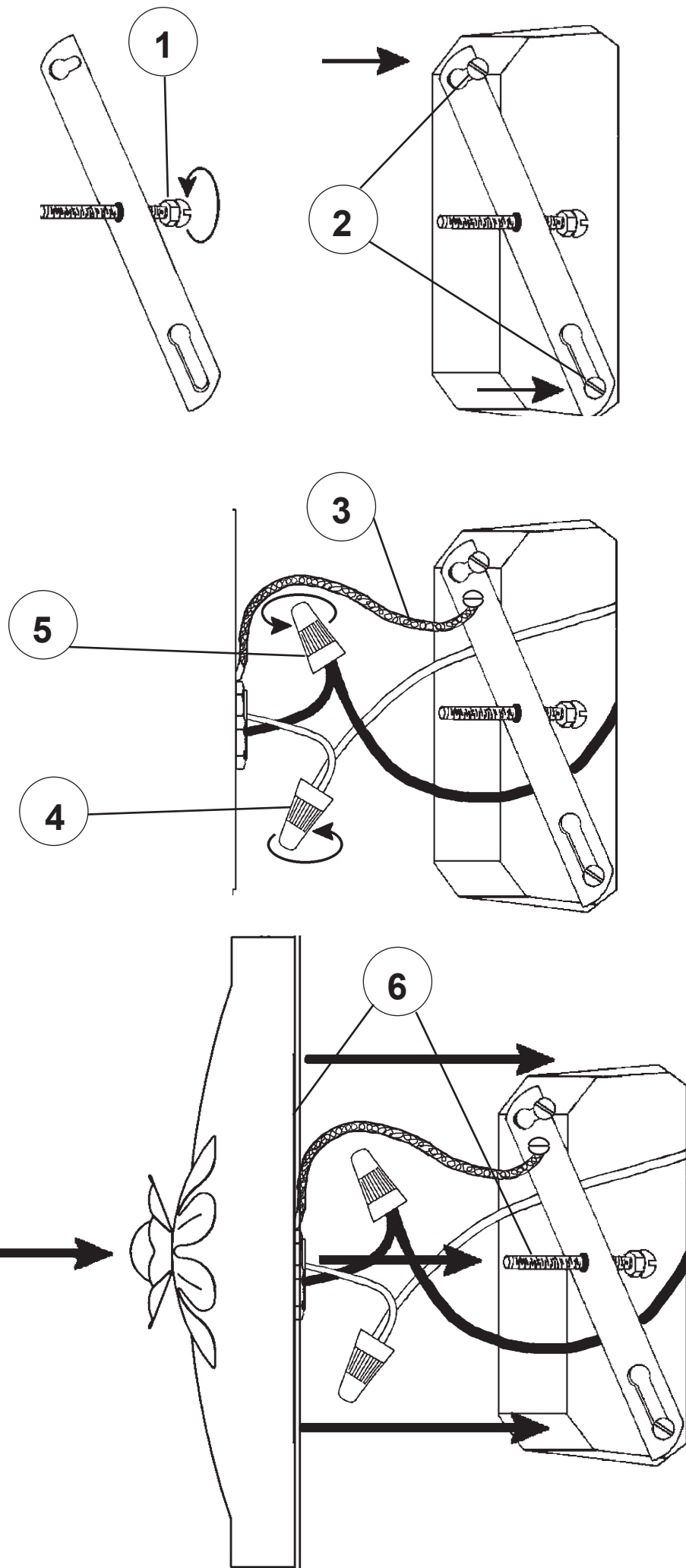
 **SCHONBEK** | 1870

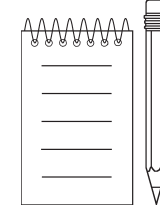
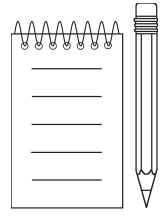
 **SCHONBEK** | 1870

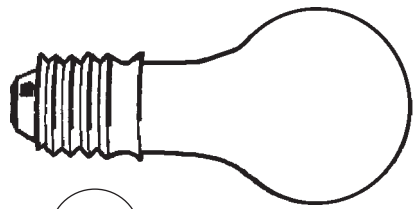


WWW.SCHONBEK.COM/INSTALLATIONMANUAL

All electrical components must be installed by a licensed electrician in accordance with the National Electric Code and the appropriate local electrical codes.

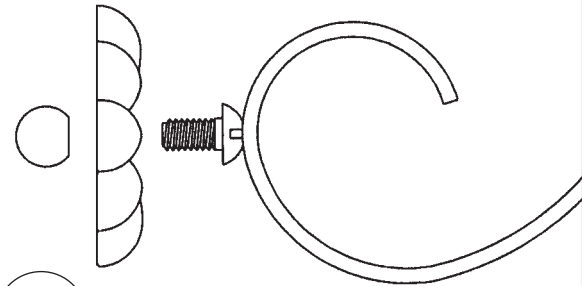






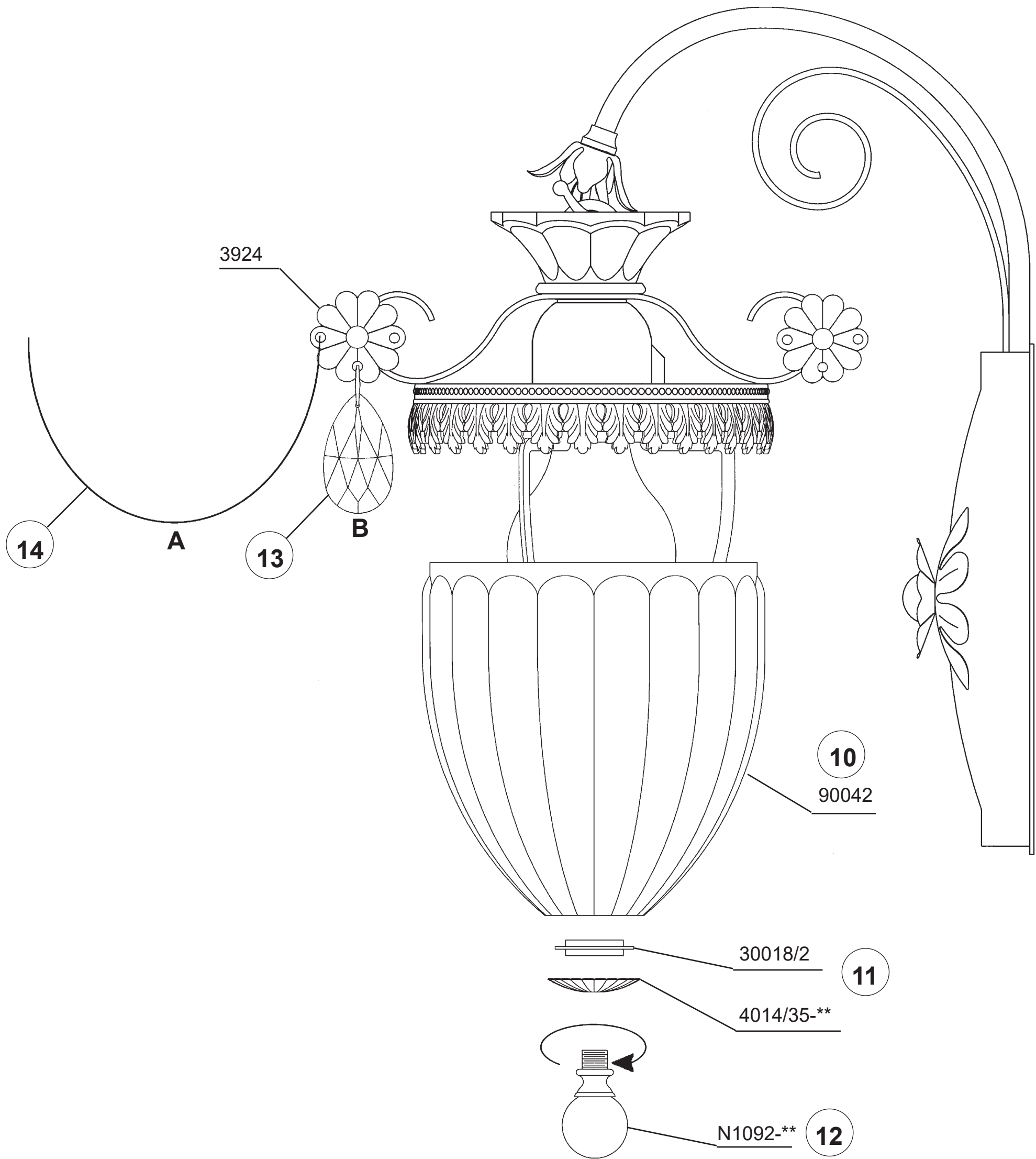
8

You will need 1 - Type A19
40 Watts Recommended
100 Watts Max

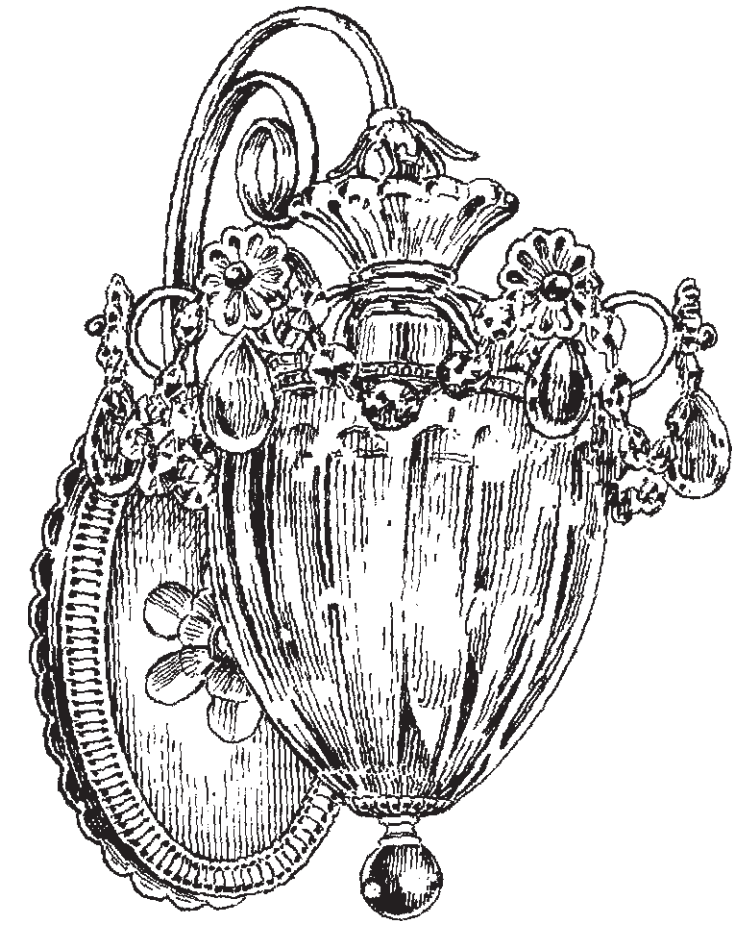


9

Slide rosettes with flat side
facing towards you onto
the screws and secure with
balls provided.



BAGATELLE 1240- _____

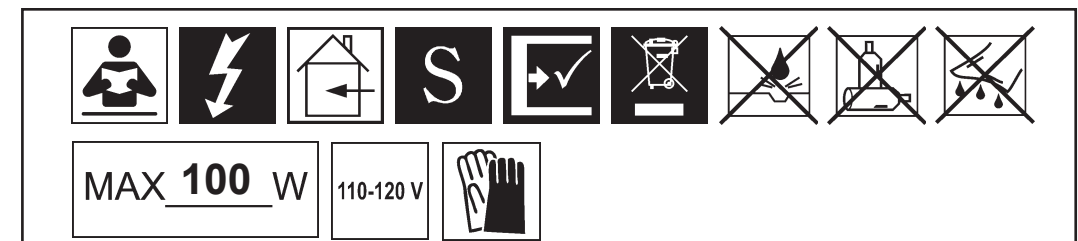


1 Light
Diameter: 8"
Body Length: 13"
Extension: 10-1/2"
Hanging Weight: 5 lbs.

THIS DESIGN IS THE PROPRIETARY
TRADE DRESS/TRADEMARK OF
W SCHONBEK LLC.

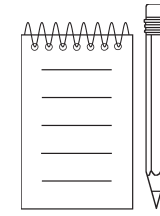
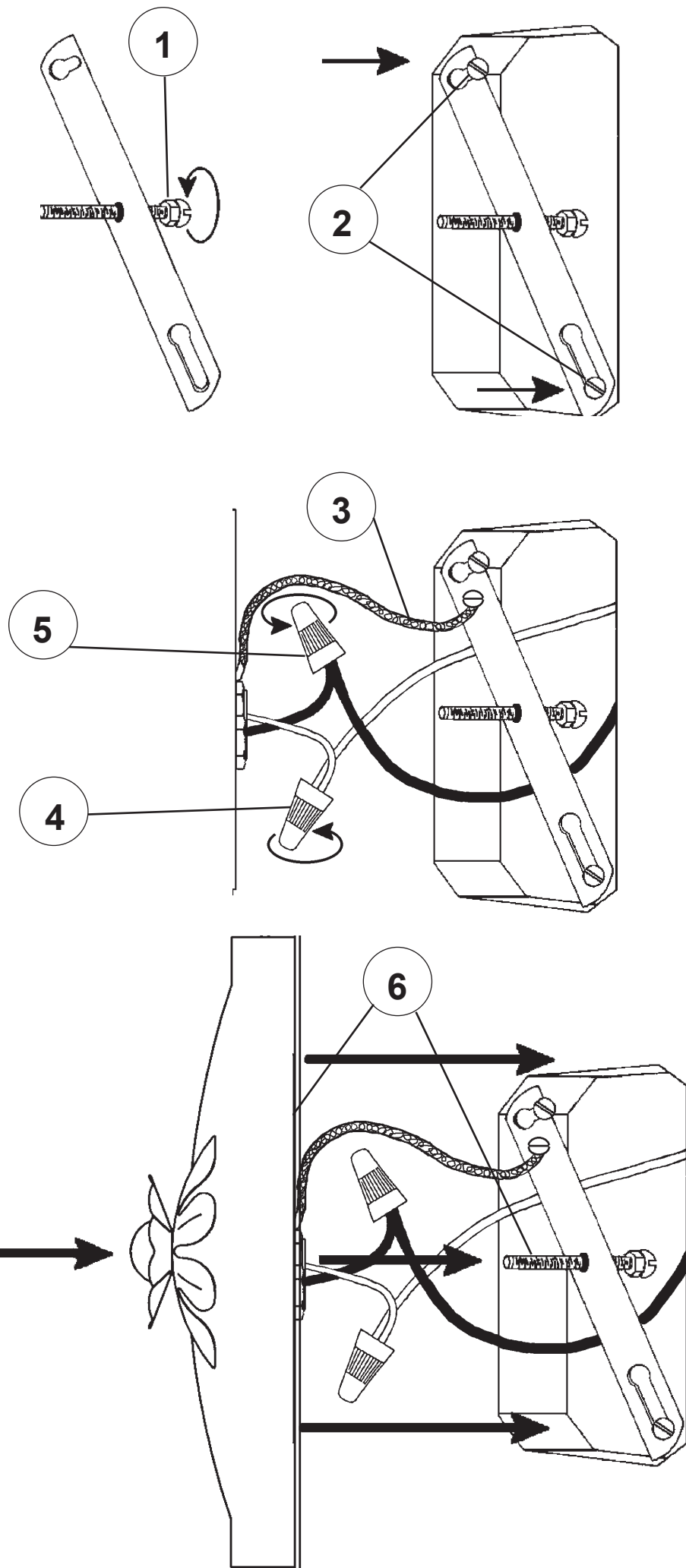
 **SCHONBEK** | 1870

 **SCHONBEK** | 1870

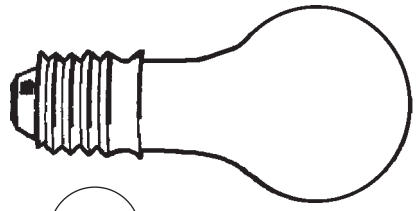


WWW.SCHONBEK.COM/INSTALLATIONMANUAL

All electrical components must be installed by a licensed electrician in accordance with the National Electric Code and the appropriate local electrical codes.

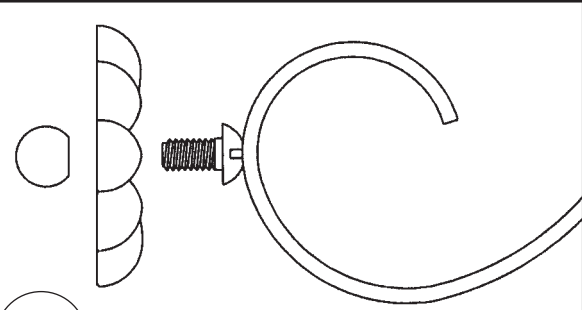






8

You will need 1 - Type A19
40 Watts Recommended
100 Watts Max



9

Slide rosettes with flat side
facing towards you onto
the screws and secure with
balls provided.

