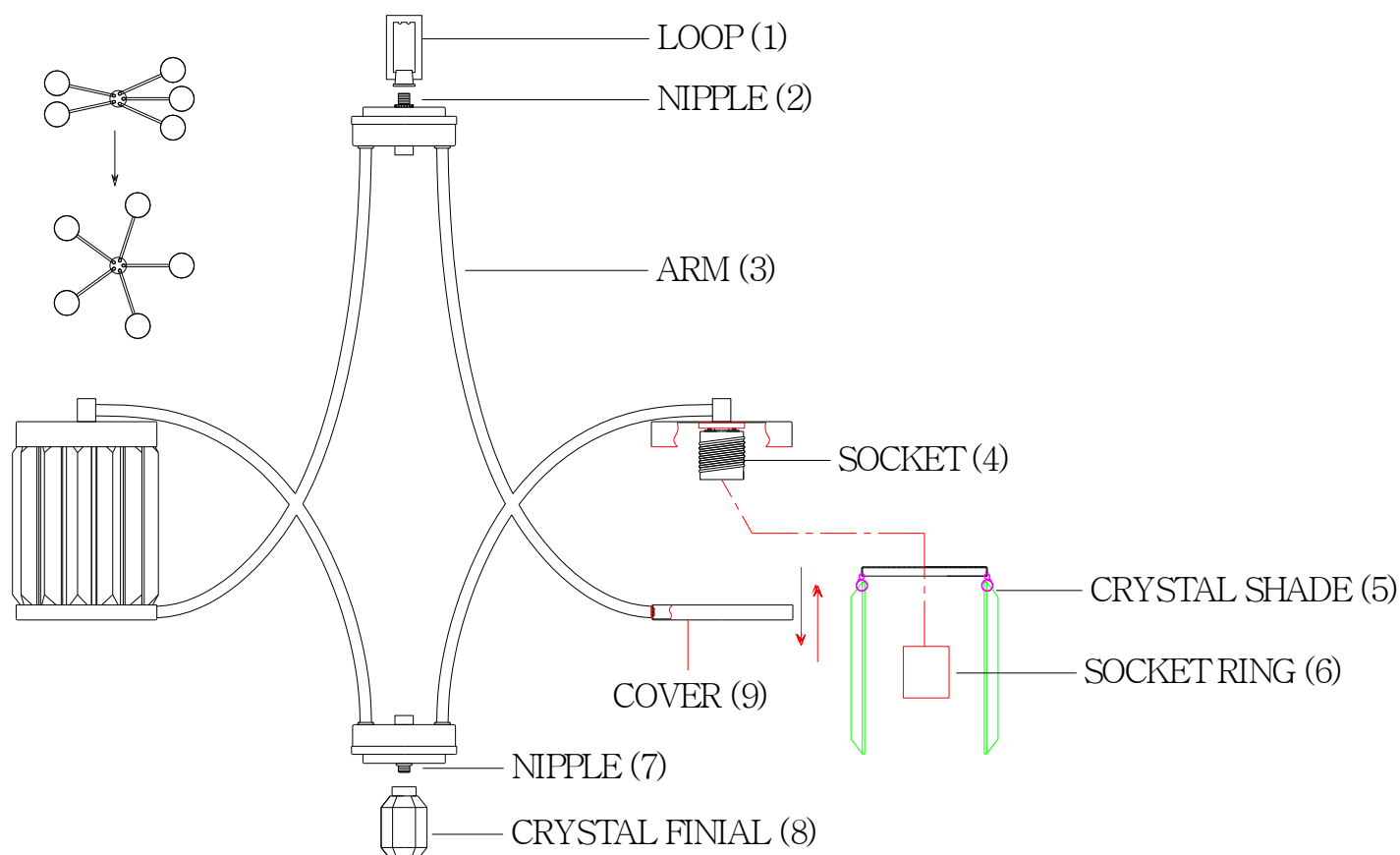




ITEM NO: 1-4060-5-28

LIGHTING



INSTALLATION INSTRUCTIONS

1. Carefully remove the fixture out of the carton, and check that all parts are included referring to the above illustration. Make sure not to misplace any parts that are needed for the installation;
2. Install the crystal shade (5) into socket (4), then secure them with socket ring (6). (Adjust the cover (9) to proper angle into order to assemble the crystal shade (5) over the socket , after that , adjust the cover (9) to level).
3. Install the crystal finial (8) onto nipple (7).
4. Install the loop (1) onto nipple (2).
5. Fixture is ready for lamping and installation.