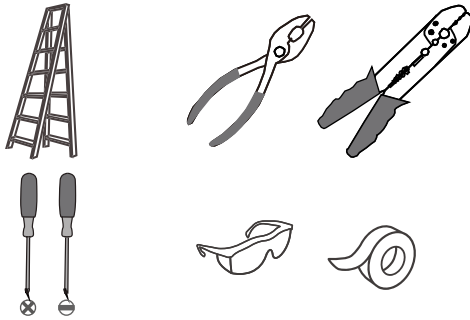
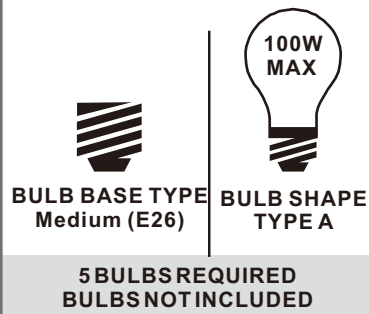


**Tools Required**



**Light Source**



**Fixture Height Adjustable 23.75" to 59.75"**

**Warnings and Cautions**

Turn off the electricity at the circuit breaker before installation. Consult a licensed electrician if in doubt about installation.

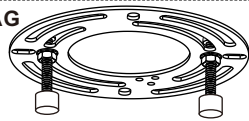
Turn off power to the fixture and allow the bulbs to cool before replacing.

**Package Contents**

**Preparation:** Identify and inspect all parts before beginning the installation.

Missing or damaged parts? Contact your original place of purchase.

**PARTS BAG**



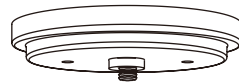
**A** Crossbar Assembly x 1



**B** Outlet Box Screw x 2



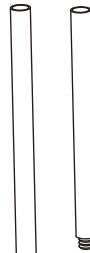
**C** Wire Connector x 3



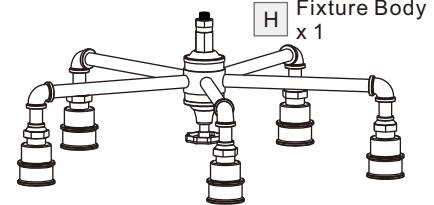
**D** Ceiling Canopy x 1



**G** Spacer Tube x 1



**E** 6" L Rod x 2



**H** Fixture Body x 1



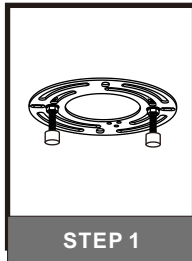
**F** 12" L Rod x 2



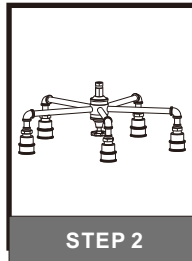
**I** Shade x 5

**Table of Contents**

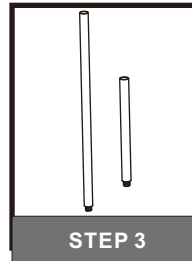
**Crossbar Assembly**



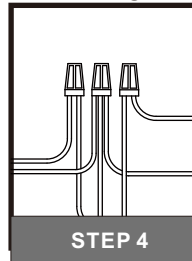
**Fixture Body**



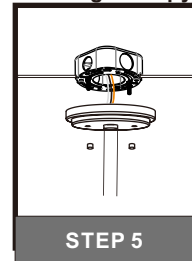
**Rods**



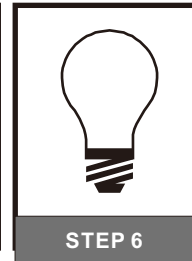
**Wiring**



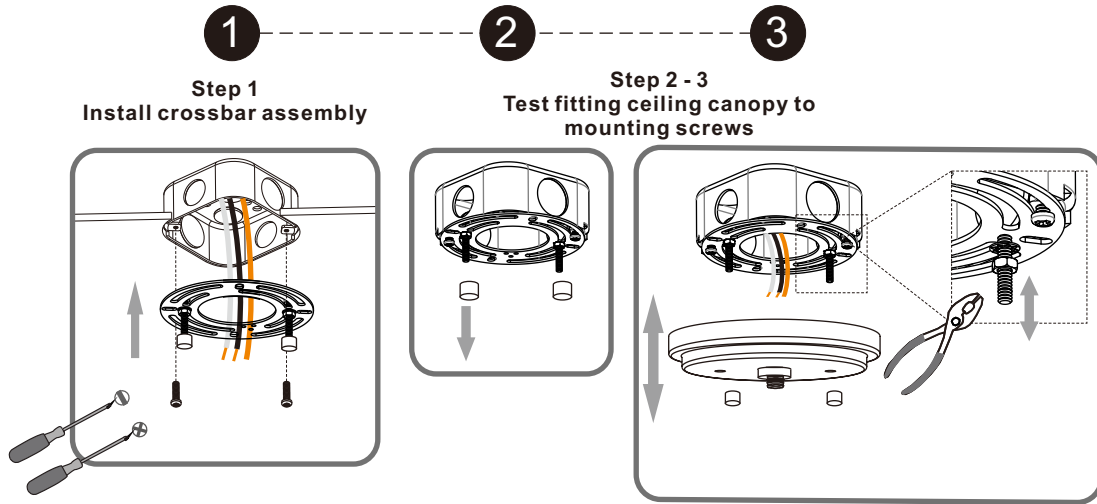
**Ceiling Canopy**



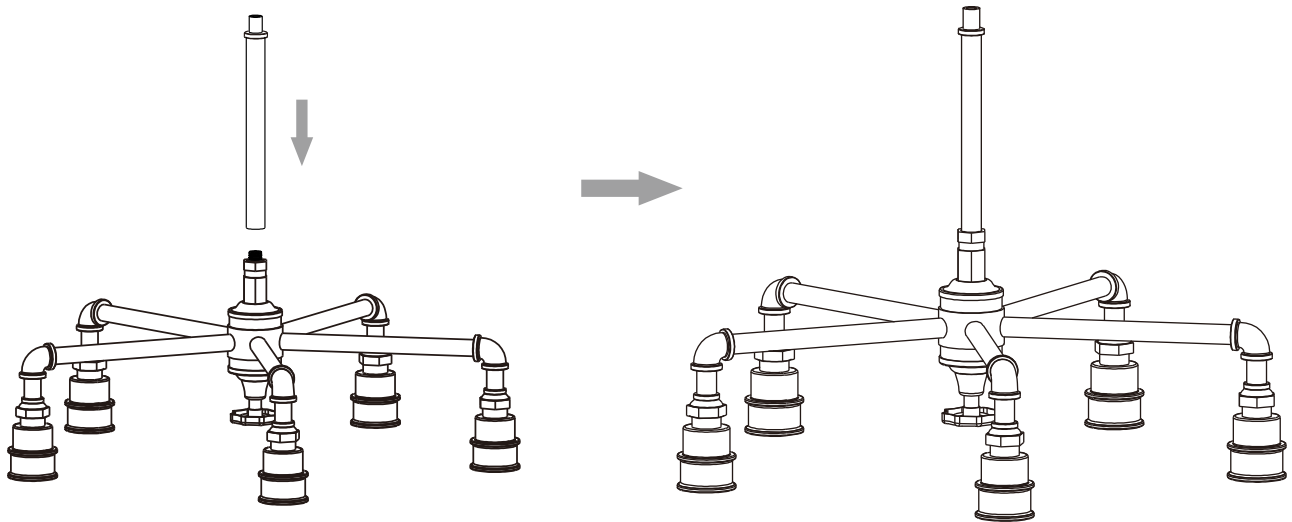
**Bulb**



# STEP 1



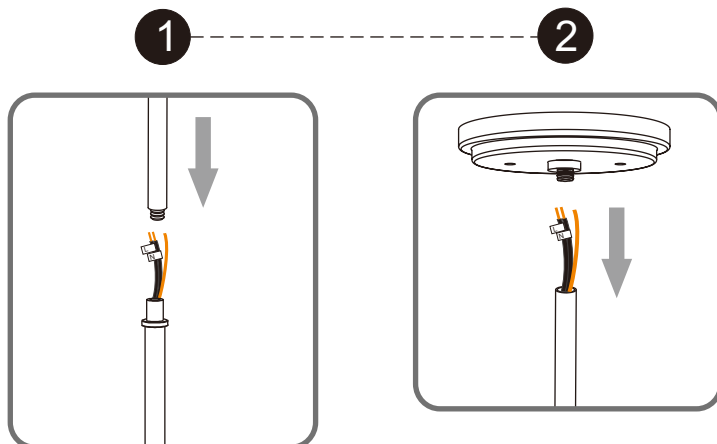
# STEP 2



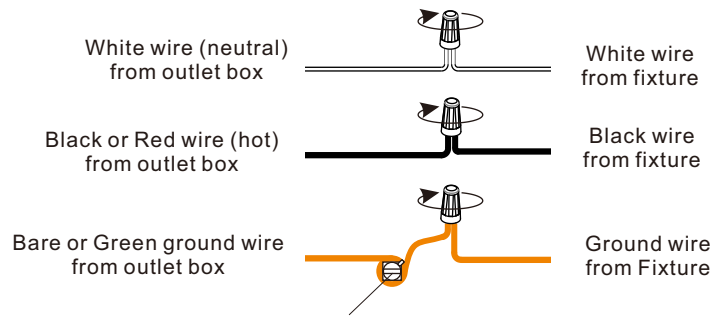
# STEP 3

**Optional Rods**

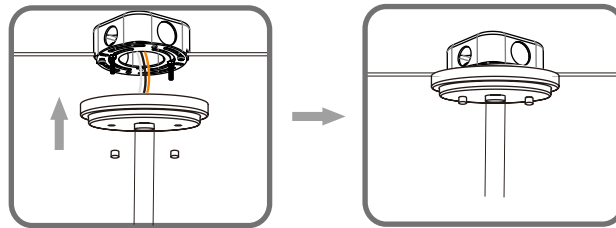
- 8' ceiling:  
(2) 6" L rods
- 9' ceiling:  
(2) 6" L + (1) 12" L rods
- 10' ceiling:  
(2) 6" L + (2) 12" L rods



### STEP 4



### STEP 5



### STEP 6

