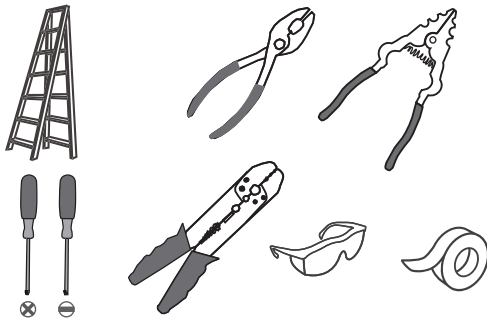
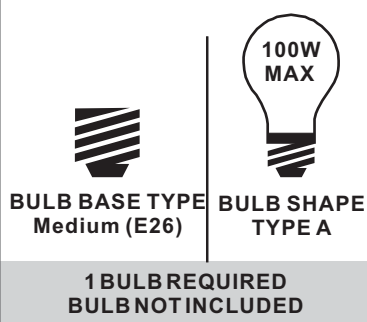


Tools Required



Light Source



**Fixture Height Adjustable
10.25" to 46.25"**

⚠ Warnings and Cautions

Turn off the electricity at the circuit breaker before installation. Consult a licensed electrician if in doubt about installation.

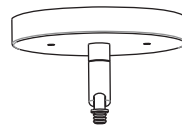
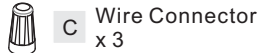
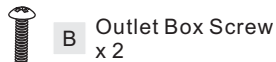
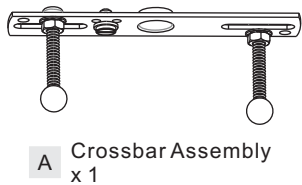
Turn off power to the fixture and allow the bulbs to cool before replacing.

Package Contents

Preparation: Identify and inspect all parts before beginning the installation.

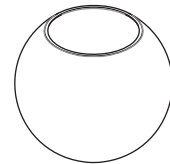
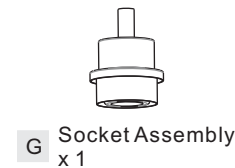
Missing or damaged parts? Contact your original place of purchase.

PARTS BAG



D Ceiling Canopy x 1

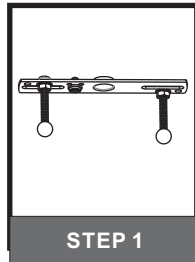
H Shade (Varies according to style purchased) x 1



Note: Shade shape is for illustration purpose only. Your shade shape may vary from illustration.

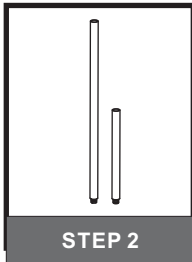
Table of Contents

Crossbar Assembly



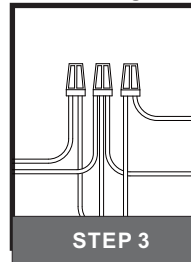
STEP 1

Downrod



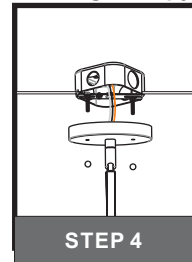
STEP 2

Wiring



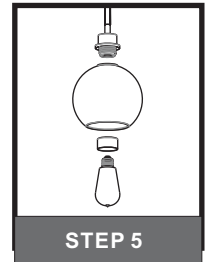
STEP 3

Ceiling Canopy



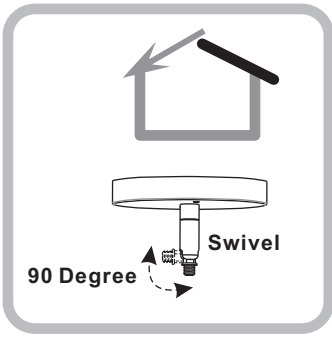
STEP 4

Shade & Bulb



STEP 5

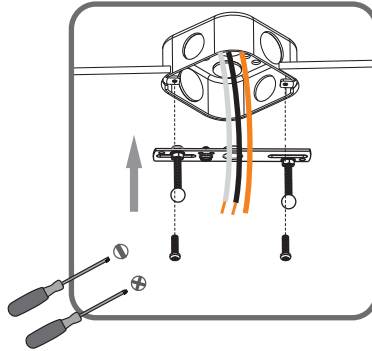
STEP 1



For angled ceilings,
Swivel opening towards wall.

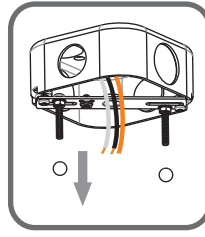
1

Step 1
Install crossbar assembly

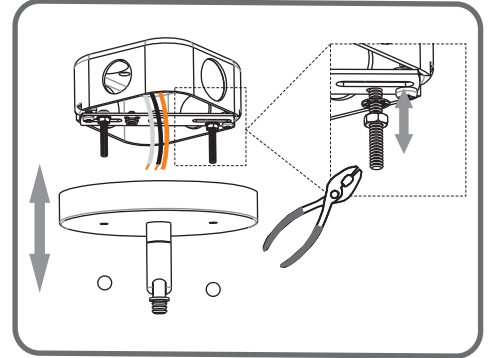


2

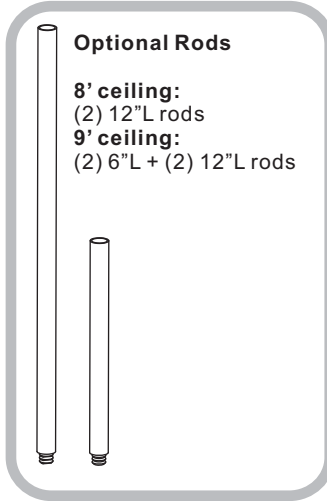
Step 2 - 3
Test fitting ceiling canopy to
mounting screws



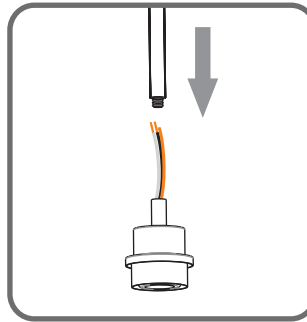
3



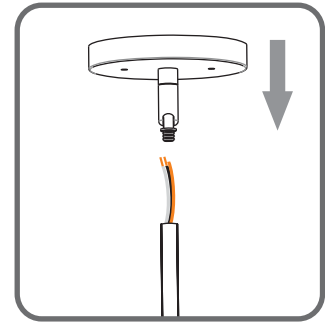
STEP 2



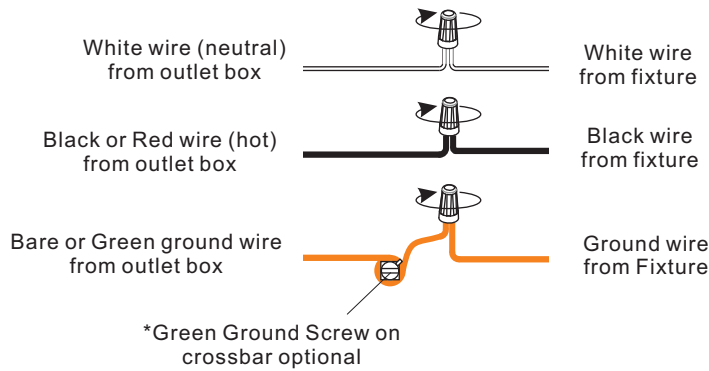
1



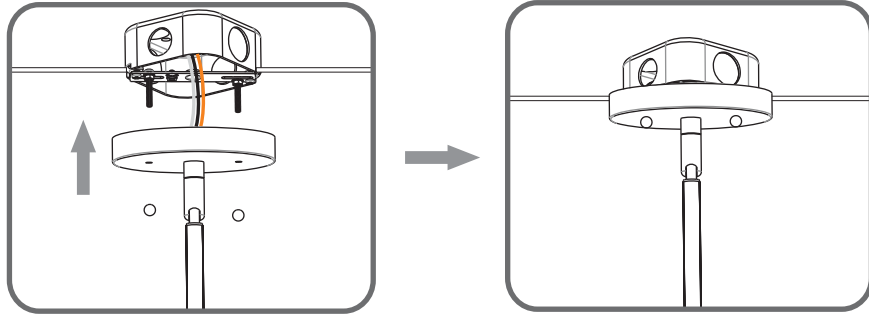
2



STEP 3

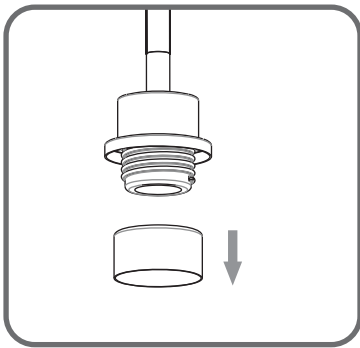


STEP 4



STEP 5

1



2

Note: Shade shape is for illustration purpose only. Your shade shape may vary from illustration.

