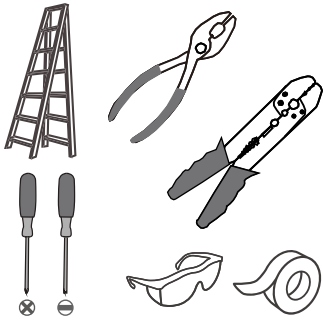
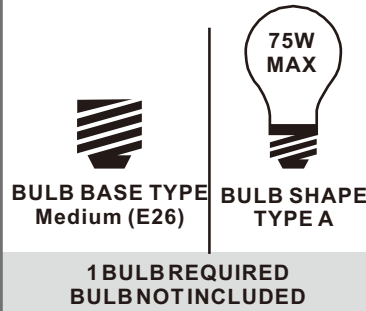


Tools Required



Light Source



Warnings and Cautions

Turn off the electricity at the circuit breaker before installation. Consult a licensed electrician if in doubt about installation.

Turn off power to the fixture and allow the bulbs to cool before replacing.

Package Contents

Preparation: Identify and inspect all parts before beginning the installation.

Missing or damaged parts? Contact your original place of purchase.

PARTS BAG

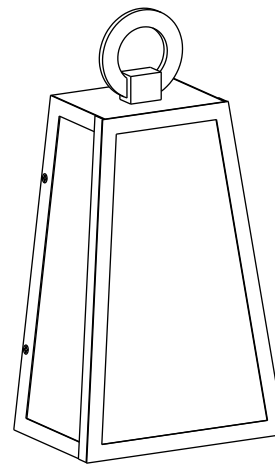
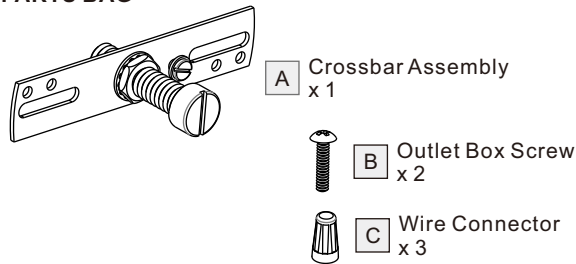
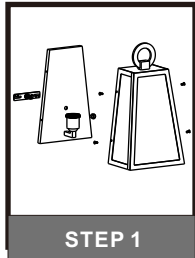
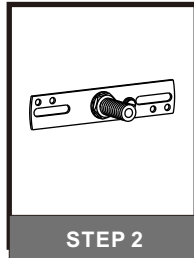


Table of Contents

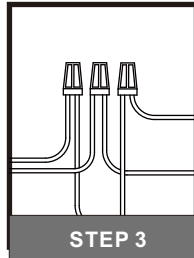
Remove styrofoam & crossbar assembly



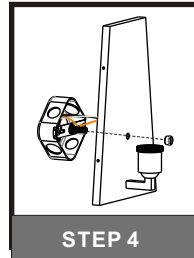
Crossbar Assembly



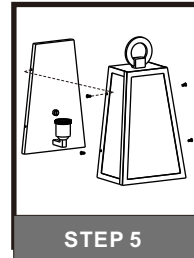
Wiring



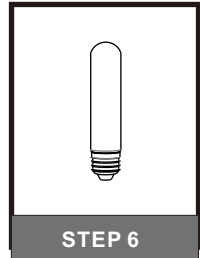
Backplate



Cage



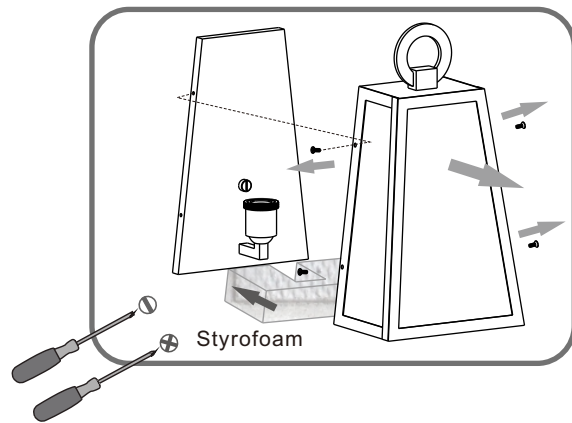
Bulb



STEP 1

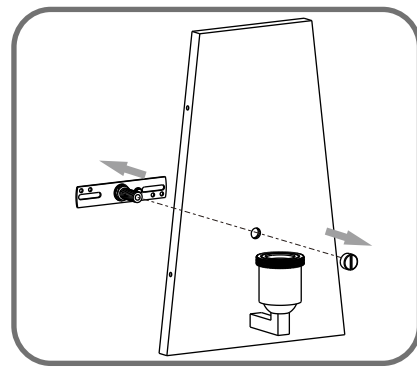
1

Remove backplate and styrofoam

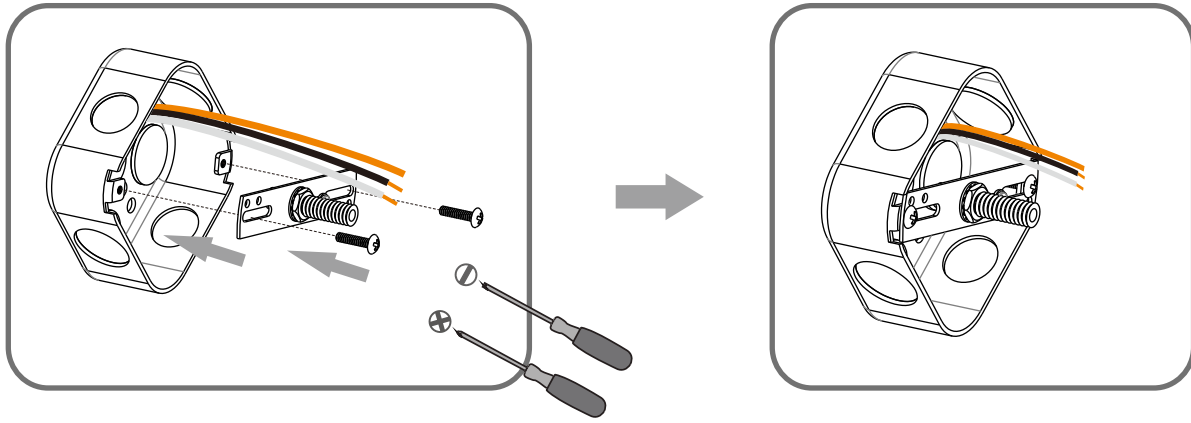


2

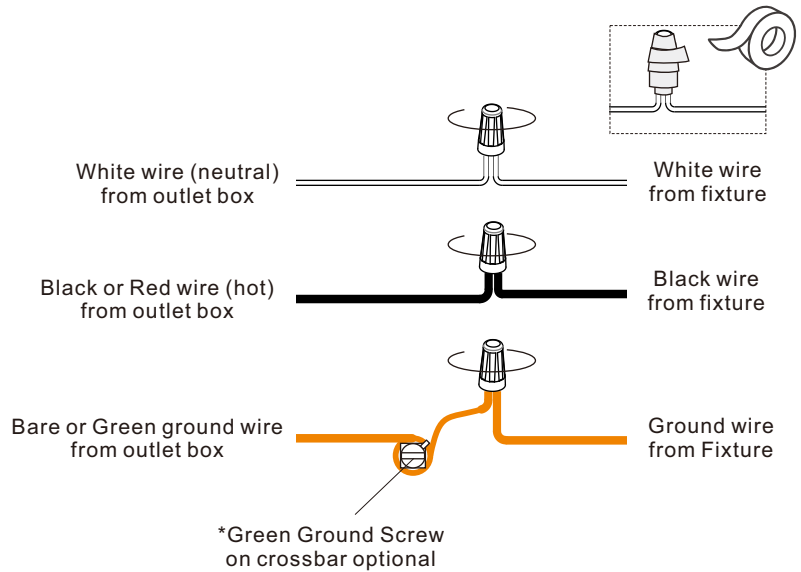
Remove crossbar assembly



STEP 2

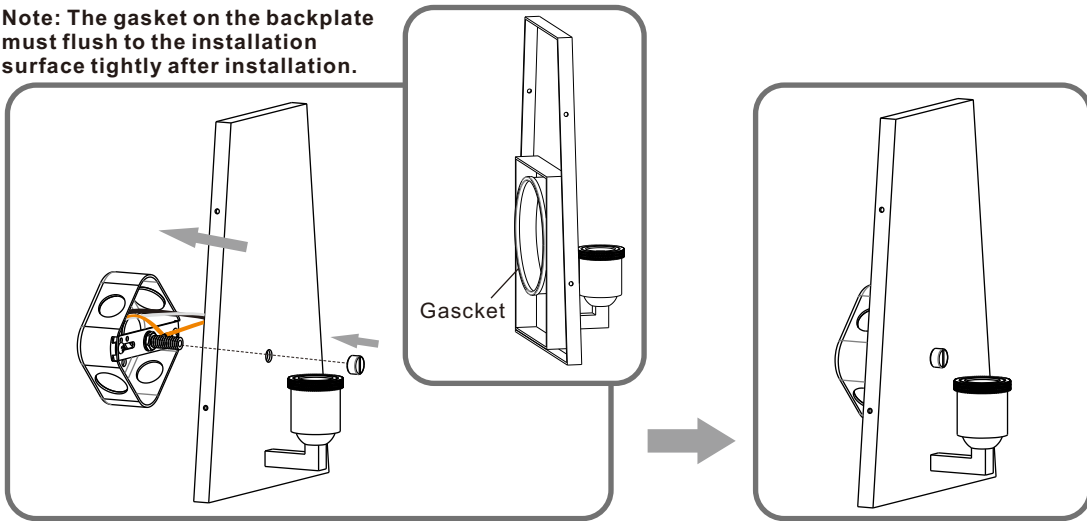


STEP 3

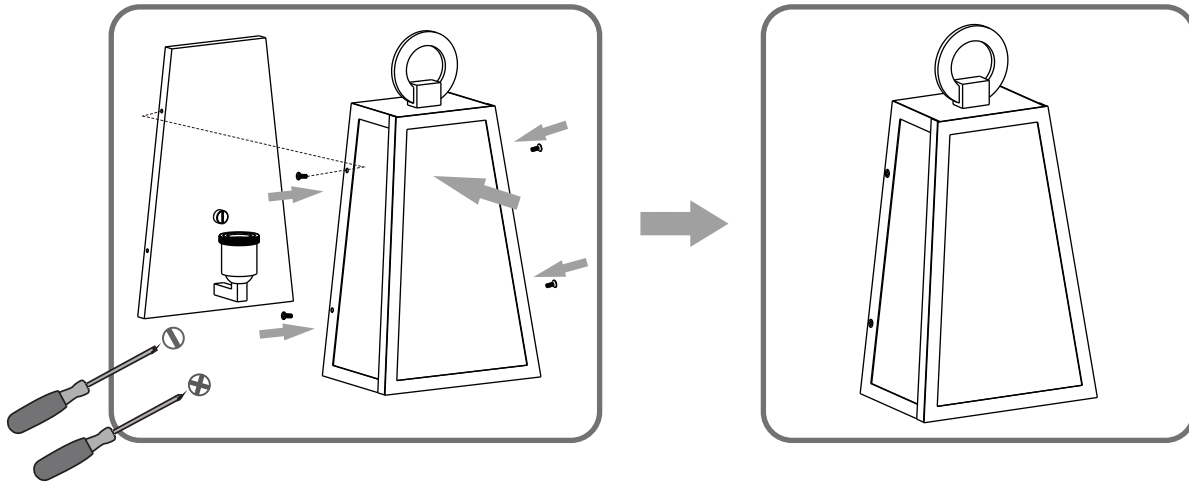


STEP 4

Note: The gasket on the backplate must flush to the installation surface tightly after installation.



STEP 5



STEP 6

