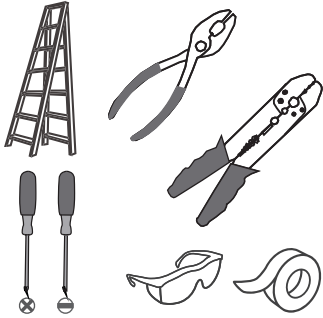


Tools Required



Light Source

6W
LED

⚠ Warnings and Cautions

Turn off the electricity at the circuit breaker before installation. Consult a licensed electrician if in doubt about installation.

Turn off power to the fixture and allow the bulbs to cool before replacing.

Package Contents

Preparation: Identify and inspect all parts before beginning the installation.

Missing or damaged parts? Contact your original place of purchase.

PARTS BAG



A Crossbar
x 1



B Mounting Screw
x 2



C Outlet Box Screw
x 2



D Wire Connector
x 3

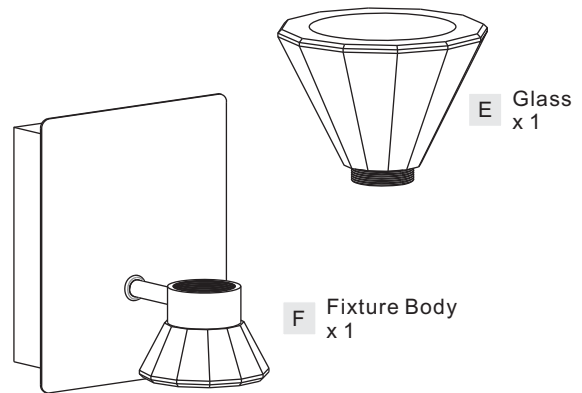
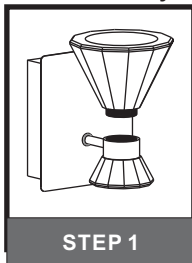
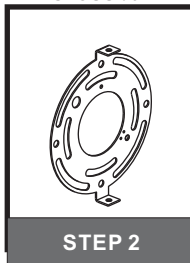


Table of Contents

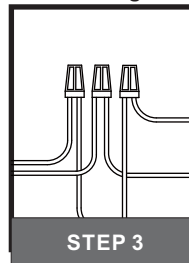
Glass & Fixture Body



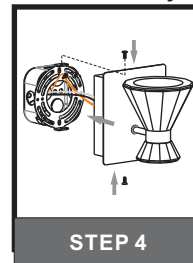
Crossbar



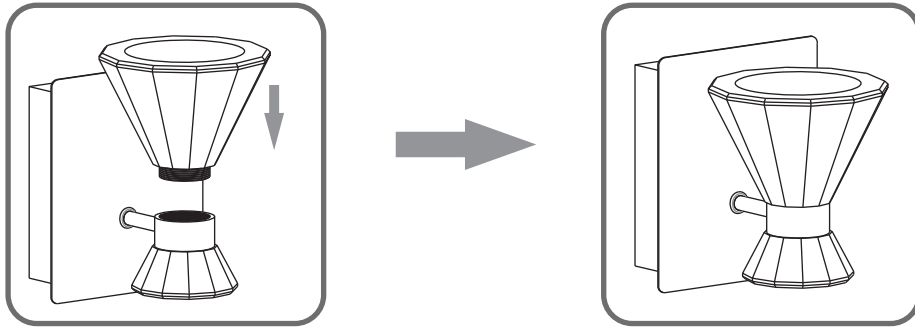
Wiring



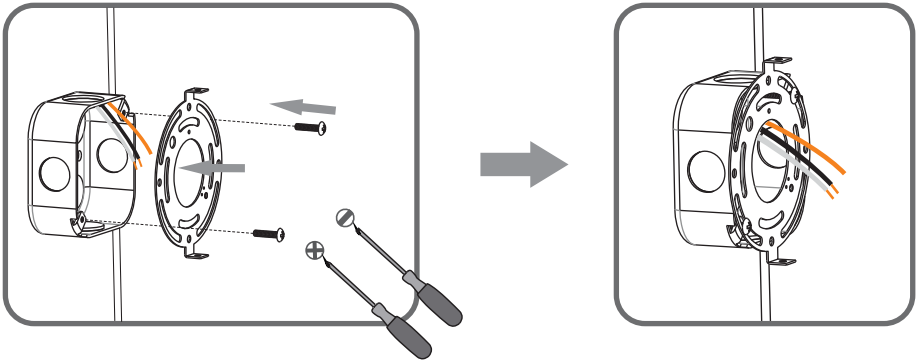
Fixture Body



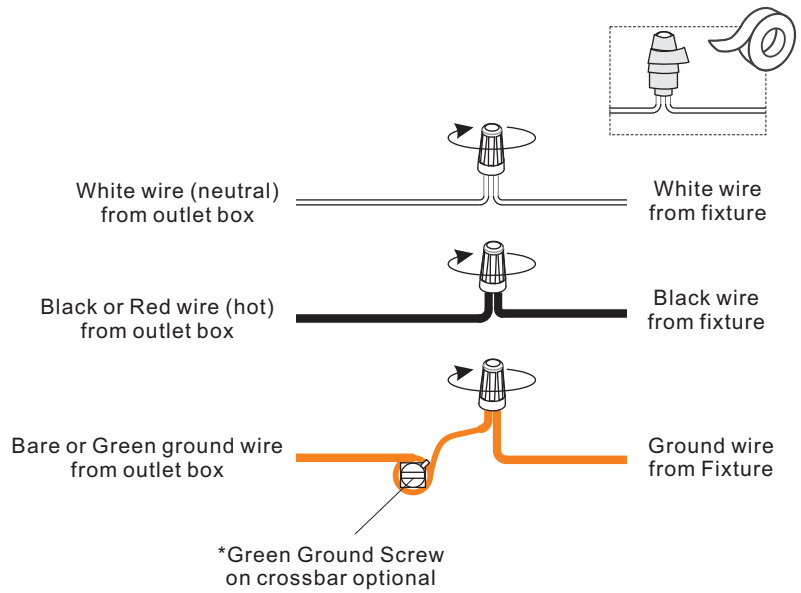
STEP 1



STEP 2



STEP 3



STEP 4

