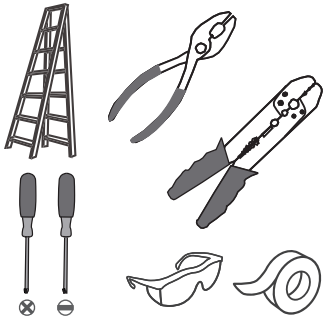


Tools Required



Light Source

20W
LED

⚠ Warnings and Cautions

Turn off the electricity at the circuit breaker before installation. Consult a licensed electrician if in doubt about installation.

Turn off power to the fixture and allow the bulbs to cool before replacing.

Package Contents

Preparation: Identify and inspect all parts before beginning the installation.

Missing or damaged parts? Contact your original place of purchase.

PARTS BAG



A Crossbar
x 1



B Lock Screw
x 2



C Outlet Box Screw
x 2



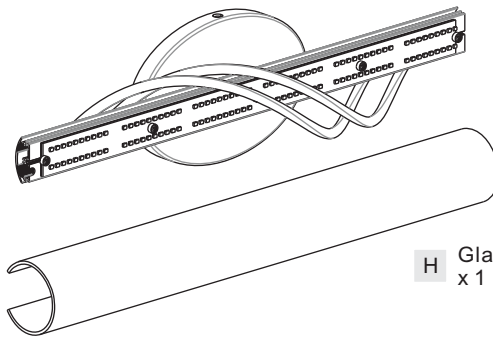
D Wire Connector
x 3



E Screw
x 2



F End Cap
x 2

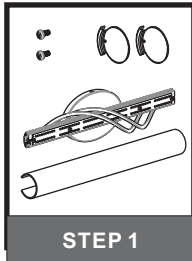


G Fixture Body
x 1

H Glass
x 1

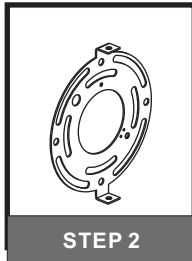
Table of Contents

Glass, End Cap & Fixture Body



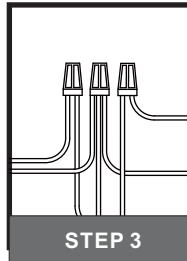
STEP 1

Crossbar



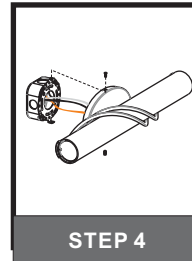
STEP 2

Wiring



STEP 3

Fixture Body

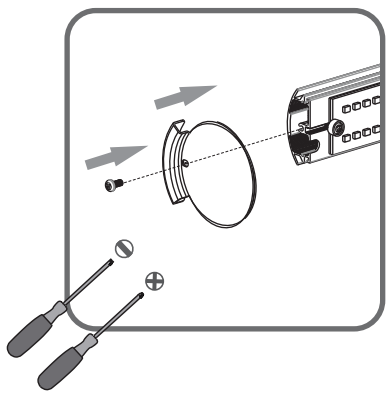


STEP 4

STEP 1

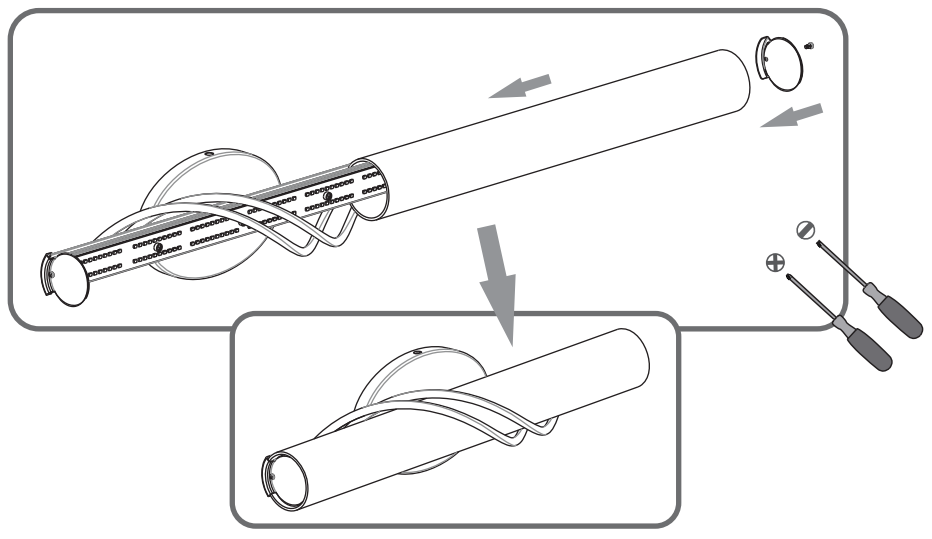
1

Install One End Cap

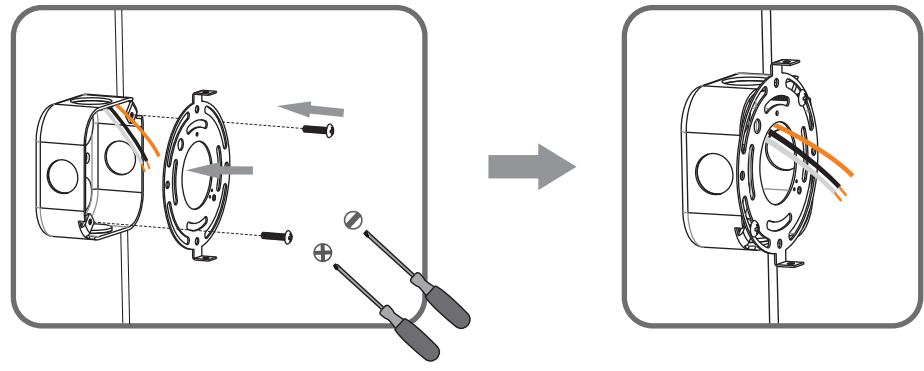


2

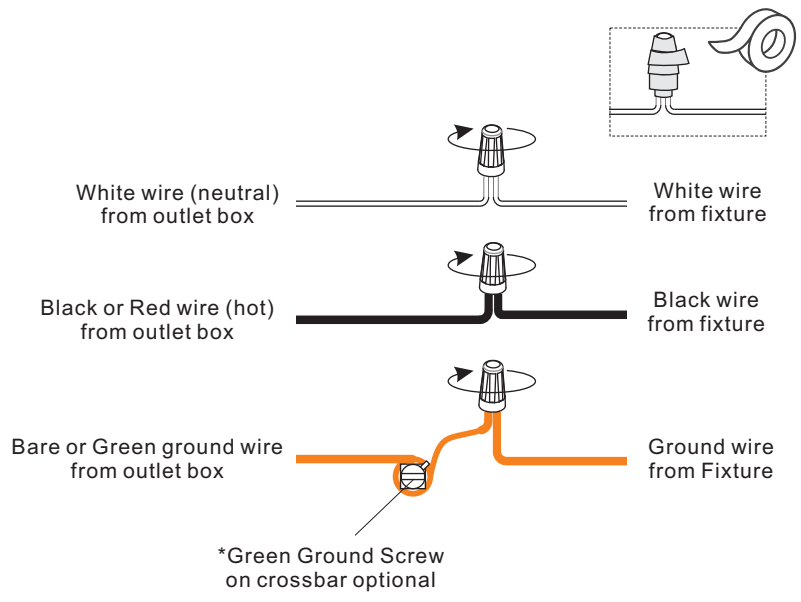
Install Glass and another End Cap



STEP 2



STEP 3



STEP 4

