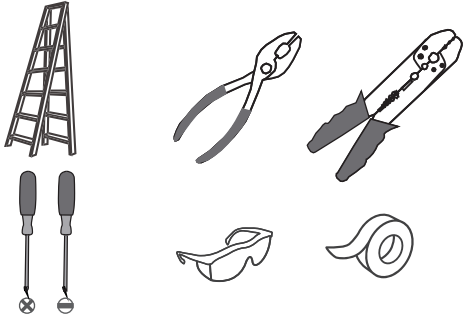


Tools Required



Light Source

30W
LED

Warnings and Cautions

Turn off the electricity at the circuit breaker before installation. Consult a licensed electrician if in doubt about installation.

Package Contents

Preparation: Identify and inspect all parts before beginning the installation.

Missing or damaged parts? Contact your original place of purchase.

PARTS BAG

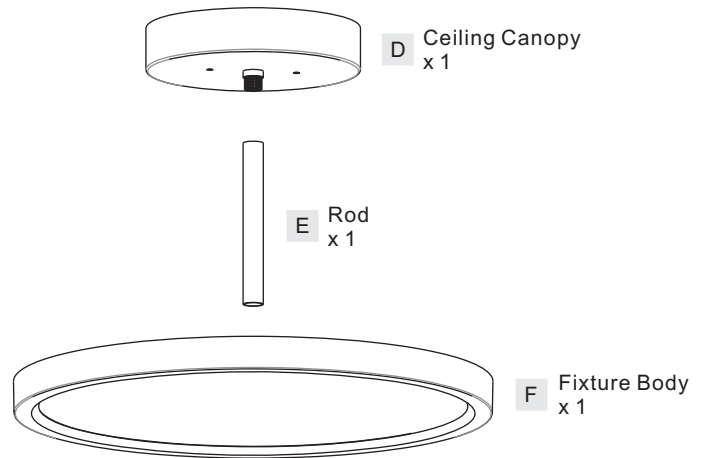
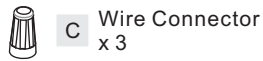
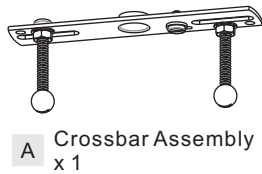
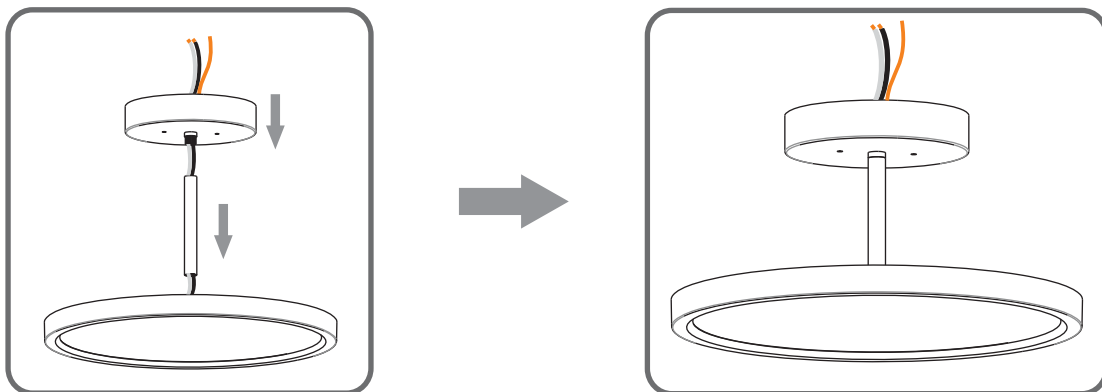


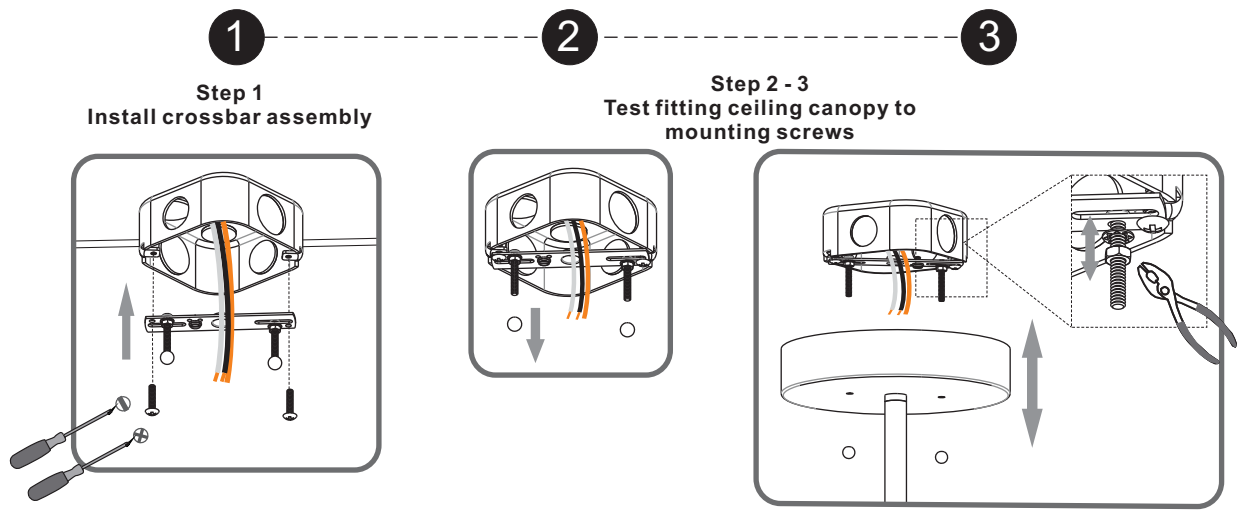
Table of Contents

| Ceiling Canopy & Rod | Crossbar Assembly | Wiring | Ceiling Canopy |
|----------------------|-------------------|---------------|----------------|
| | | | |
| STEP 1 | STEP 2 | STEP 3 | STEP 4 |

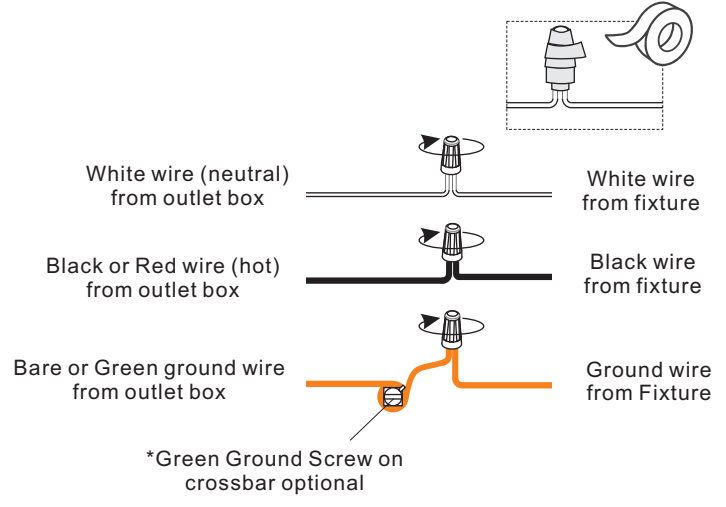
STEP 1



STEP 2



STEP 3



STEP 4

