

DATE: _____ TYPE: _____

NAME: _____

PROJECT: _____

P350144-009

Mast

Rejuvenate from the rush and flurry of a busy day with the Mast two-light flush mount. The incorporation of faux wood accents and an oversized, Brushed Nickel frame holding etched glass shades creates a natural and organic touch for bathrooms, living rooms, and bedrooms in coastal and modern farmhouse interiors.

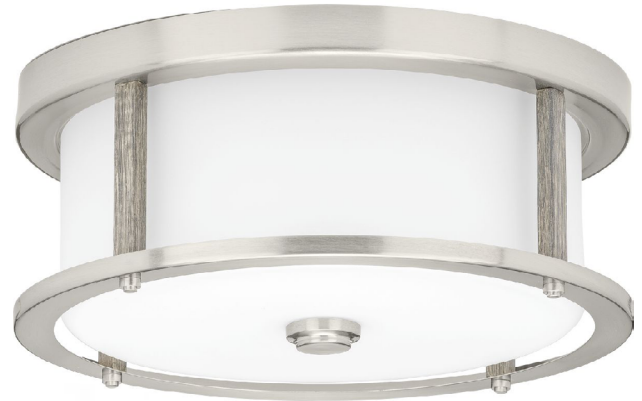
- Optimal for bathrooms, living rooms, hallways, bedrooms, or wherever soothing overhead lighting is desired
- The incorporation of faux wood accents offers a natural and organic feel for coastal and modern farmhouse interiors
- Two-light flush mount with a simple, clean design
- Features a signature, oversized frame banded on its top and bottom
- Trimmed in metal with faux wood accents
- An etched glass shade fully encloses the bulb
- Finished in subtly reflective Brushed Nickel
- Measures 13 in diameter X 5-1/4 in height
- Uses two 60-watt max medium base bulbs, or the LED equivalents, that are sold separately
- Progress Lighting products are designed for exceptional quality, reliability, and functionality

Category: Close-to-Ceiling

Finish: Brushed Nickel (Plated)

Construction: Steel Construction

Glass/Shade: Clear & Etched White Glass Round



Diameter: 13"
Height: 5-1/4"

Glass
Width: 11"
Length: 11"
Height: 1-1/8"

MOUNTING	ELECTRICAL	LAMPING	ADDITIONAL INFORMATION
Ceiling mounted Mounting Strap for outlet box included Ceiling Pan covers a standard 4" octagonal recessed outlet box 13" W., 1" ht., 13" depth	Pre-wired 6" of wire supplied 120 V	Quantity: Two 60w max. Medium Base E26 base Porcelain sockets	cCSAus Damp location listed