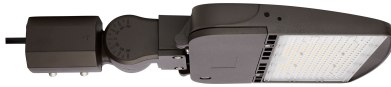


Project/Job Name: \_\_\_\_\_

Location: \_\_\_\_\_

Fixture Type: \_\_\_\_\_

Notes: \_\_\_\_\_



**65-841-4** - LED Area Light Type IV; 100W; Bronze Finish; 5000K; 120-277V



**ELECTRICAL**

Technology:	LED
Watts:	100W
Volts:	120V-277V
Lumens:	13793L
Lamp Base :	Integrated
CRI:	80
CCT (Kelvins):	5000K
Color Description:	Natural Light
Hours Rated:	50000
Dimmable:	Yes-Dimmable
Dimmable Down To %:	100 to 20 percent
DimmableText:	0-10V Dimming
HID Equivalent :	250W
Operating Temperature :	-40C (-40F) to +45C (+113F)
Lamp Included :	Integrated
Number of LEDs :	147
Surge Protection :	Built-in surge protection - 4KV
Power Factor :	>0.9
Voltage Type:	Range Voltage
Warranty:	5 Year Limited - Fixtures

**PACKAGING**

Each UPC:	045923684142
Each Quantity:	1
Each Dimensions:	23.23 x 14.37 x 5.71
Case UPC:	10045923684149
Case Quantity:	1
Case Dimensions:	23.23 x 14.37 x 5.71

**PHYSICAL**

Finish:	Bronze
Lens Material:	Polycarbonate (PC)
Finish Family:	Bronze
Dimensions:	L:20.71" W:12.40" H:3.11"
Weight (Lbs.):	7.88
Material:	Die-cast Aluminum
Sensor:	Optional

**COMPLIANCE**

Safety Listing:	cULus - Certified
Location Rating:	Wet
Indoor/Outdoor:	Indoor; Outdoor
Energy Star Qualified:	No
DLC Approved:	Yes
DLC Classification:	Premium
DLC ID:	S-VSJK8L
DLC Primary Use:	Outdoor Pole/Arm-Mounted Area and Roadway Luminaires
CA Prop 65:	Lead
BAA Compliant:	No
FCC Compliant:	Yes
IP Rating:	IP65
IK Rating:	IK10
RoHS Compliant:	Yes
SDS Class:	LED_Fixture
B.U.G Rating:	B4-U3-G4
Restrictions:	No Restrictions

**INFO**

Additional Info:	Powder Coated
Specification Note:	Type IV Light Distribution
Includes:	Slip-fitter Mount

**ACCESSORIES**

---



**65-870** Area Light; Universal; Direct and Slip Fitter Mount; Bronze Finish

---



**65-871** Area Light; Direct Mount; Square or Round; Pole Mount; Bronze Finish

---



**65-872** Area Light; Trunnion Mount; Bronze Finish

---



**65-873** Yoke Mount Bracket; Bronze Finish; For Use With 100W/150W/200W Area Lights; Bronze Finish

---



**65-875** Area Light Extended Slipfitter Mount with Sensor Knockouts; Bronze Finish

---



**65-876** Area Light Fixed Arm Mount with Sensor Knockouts; Bronze Finish

---



**65-877** Area Light Cutoff Shield; Bronze Finish; For Use With 100W/150W/240W/300W Fixtures

---



**86-221** Area Light Photocell Socket; 100-277 Volt; 100 and 200 watt

---



**86-224** 10KV Area Light Surge Protector; 100-277 Volt

---



**86-227** Area Light PIR Sensor; 100-277 Volt

---



**86-228** Area Light Microwave Sensor; 100-277 Volt

---

**DIMMER COMPATIBILITY**

---

<b>LeGrand</b>	ADPD4FBL3P2W4
<b>Eaton</b>	DF10P
<b>Leviton</b>	DS710-10Z
<b>Lutron</b>	DVSCSTV
<b>Lutron</b>	DVSTV
<b>Leviton</b>	IP710-LFZ
<b>Lutron</b>	MS-Z101
<b>Lutron</b>	MS-Z101-V
<b>Lutron</b>	NTSTV-DV
<b>Lutron</b>	RMJS-8T-DV-B PJ2-3BRL-GWH-L01
<b>Eaton</b>	SF10P