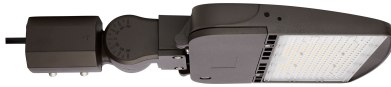


Project/Job Name: _____

Location: _____

Fixture Type: _____

Notes: _____



65-840-5 - LED Area Light Type V; 100W; Bronze Finish; 4000K; 120-277V



ELECTRICAL

Technology:	LED
Watts:	100W
Volts:	120V-277V
Lumens:	13793L
Lamp Base :	Integrated
CRI:	80
CCT (Kelvins):	4000K
Color Description:	Cool White
Hours Rated:	50000
Dimmable:	Yes-Dimmable
Dimmable Down To %:	100 to 20 percent
DimmableText:	0-10V Dimming
HID Equivalent :	250W
Operating Temperature :	-40C (-40F) to +45C (+113F)
Lamp Included :	Integrated
Number of LEDs :	147
Surge Protection :	Built-in surge protection - 4KV
Power Factor :	>0.9
Voltage Type:	Range Voltage
Warranty:	5 Year Limited - Fixtures

PACKAGING

Each UPC:	045923684050
Each Quantity:	1
Each Dimensions:	23.23 x 14.37 x 5.71
Case UPC:	10045923684057
Case Quantity:	1
Case Dimensions:	23.23 x 14.37 x 5.71

PHYSICAL

Finish:	Bronze
Lens Material:	Polycarbonate (PC)
Finish Family:	Bronze
Dimensions:	L:20.71" W:12.40" H:3.11"
Weight (Lbs.):	7.88
Material:	Die-cast Aluminum
Sensor:	Optional

COMPLIANCE

Safety Listing:	cULus - Certified
Location Rating:	Wet
Indoor/Outdoor:	Indoor; Outdoor
Energy Star Qualified:	No
DLC Approved:	Yes
DLC Classification:	Premium
DLC ID:	S-JIoHNL
DLC Primary Use:	Outdoor Pole/Arm-Mounted Area and Roadway Luminaires
CA Prop 65:	Lead
BAA Compliant:	No
FCC Compliant:	Yes
IP Rating:	IP65
IK Rating:	IK10
RoHS Compliant:	Yes
SDS Class:	LED_Fixture
B.U.G Rating:	B5-U3-G2
Restrictions:	No Restrictions

INFO

Additional Info:	Powder Coated
Specification Note:	Type V Light Distribution
Includes:	Slip-fitter Mount

ACCESSORIES

65-870 Area Light; Universal; Direct and Slip Fitter Mount; Bronze Finish



65-871 Area Light; Direct Mount; Square or Round; Pole Mount; Bronze Finish



65-872 Area Light; Trunnion Mount; Bronze Finish



65-873 Yoke Mount Bracket; Bronze Finish; For Use With 100W/150W/200W Area Lights; Bronze Finish



65-875 Area Light Extended Slipfitter Mount with Sensor Knockouts; Bronze Finish



65-876 Area Light Fixed Arm Mount with Sensor Knockouts; Bronze Finish



65-877 Area Light Cutoff Shield; Bronze Finish; For Use With 100W/150W/240W/300W Fixtures



86-221 Area Light Photocell Socket; 100-277 Volt; 100 and 200 watt



86-224 10KV Area Light Surge Protector; 100-277 Volt



86-227 Area Light PIR Sensor; 100-277 Volt



86-228 Area Light Microwave Sensor; 100-277 Volt



65-840-5 - LED Area Light Type V; 100W; Bronze Finish; 4000K;
120-277V

DIMMER COMPATIBILITY

LeGrand	ADPD4FBL3P2W4
Eaton	DF10P
Leviton	DS710-10Z
Lutron	DVSCSTV
Lutron	DVSTV
Leviton	IP710-LFZ
Lutron	MS-Z101
Lutron	MS-Z101-V
Lutron	NTSTV-DV
Lutron	RMJS-8T-DV-B PJ2-3BRL-GWH-L01
Eaton	SF10P