

# NUTP10 Series

## 24V CCT Color Tuning LED Tape Light

Source: 3.25W/ft. LED  
290lm/ft.

Type

Project

Catalog No.

Notes

### PRODUCT DESCRIPTION

CCT Color Changing LED Light allows the end user to select from a 2500K to 4500K temperature with a handheld control. Different applications require different Kelvin temperatures to enhance various color spectrums. Use 2500K for a warm red enhancing application and 4500K for a blue/green enhancing application. The RF controller is operated with a remote or controller that lets the end user select the temperature and intensity as the application or mood changes as well as having the option to set optional automatic changing modes.

### FEATURES

- Available in 16' roll, 12" section, and 4" section
- Change kelvin temperature from 2500K-4500K with hand held remote or wall controller
- Separable every 12", easily disconnected and connected without soldering
- Field cuttable every 4" or 6 LEDs
- Easy to install; pre-applied 3M™ tape or 15 acrylic mounting clips (included with roll)
- Synchronizable
- No soldering or additional wiring is required
- 3-Year Limited Warranty

### INCLUDED WITH EVERY 16' ROLL

(1) 16' Tape Light Roll with 12" separable sections, (15) Acrylic Mounting Clips with screws [NATHR-685], and (1) 12" Power Line Interconnector [NARGB-710W].

### SPECIFICATION

**Construction:** The tape can be cut every 4" or 6 LEDs at marked intervals, cutting does not effect circuit. LED Tape Light is also separable every 12", simply separate pieces as this eliminates soldering when using partial rolls.

**Mounting:** Each Tape Light includes pre-applied 3M™ adhesive tape for simple installation. Optional channels and clear acrylic clips are available.

**Controller:** Each run requires a CCT controller, which can be linked together for color synchronization. The controller can be controlled locally or with an optional hand held remote.

**Dimming:** Dimming CCT tape light is controlled by CCT controller. Dimmable drivers are only for powering tape light runs.

### ELECTRICAL

**Input Voltage:** 24V

**Light Source:** 18 Dual LEDs per foot

**Lumens / Wattage:** 290lm / 3.25W per foot

**Color Temperature:** Color Tuning (2500K to 4500K)

**Dimming:** Dimmable with CCT controller

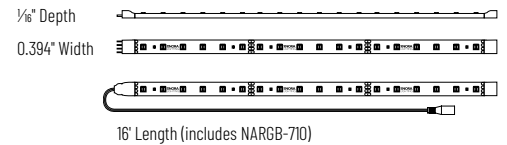
**Maximum Run Length:** 30'

### LABELS AND LISTINGS

- cULus Listed for Damp Location
- 3-Year Limited Warranty



### PRODUCT IMAGES & DIMENSIONS



## 24V CCT Color Tuning LED Tape Light

Length / Tape Light Finish

**NUTP10-W16CCT** = 16' Roll / White finish

**NUTP10-WCCT/12** = 12" Section / White finish

**NUTP10-WCCT/4** = 4" Section / White finish

Example: **NUTP10-W16CCT** = 16' 24V CCT Color Tuning LED Tape Light Roll, White finish

# NUTP10 Series

## 24V CCT Color Tuning LED Tape Light Accessories

Type

Project

Catalog No.

Notes



CCT Color Tuning Controller and Hand Held Remote

**NARGBW-975** 24V CCT Controller  
**NACCT-877** CCT Hand Held Remote

12-24V controller is required for each CCT LED Tape Light run. Installs between the driver and the power line interconnector. Requires CCT Hand held remote (NACCT-877) for functions.



CCT Touch Pad Wall Controller

**NACCT-868**

**Includes:** Mounting back box.

**Requires:** 24V LED driver

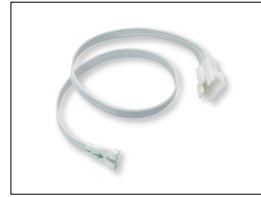
**Functions:** Local control of CCT, on/off with memory and dimming.



Controller Power Line Connector

**NARGB-762W** 10' Cable  
**NARGB-763W** 30' Cable

Replaces included 9-1/2" input wire, to allow for a longer length between CCT controller or Spectrum and LED driver.



Power Line Interconnector

**NARGB-710W** 12" Cable

Connects a CCT Tape Light run to a CCT controller or Spectrum.

(1) Power line interconnector is included with every Tape Light roll. Use interconnection cables to increase length.



Interconnection Cables

**NARGB-702W** 2" Cable  
**NARGB-706W** 6" Cable  
**NARGB-718W** 18" Cable  
**NARGB-736W** 36" Cable  
**NARGB-772W** 72" Cable

Allows easy linking of two CCT Tape Lights sections. Cables are flexible and can be moved in any direction, or be joined together for custom lengths.



Splitter Cable

**NARGB-700W** Y Splitter  
**NARGB-701W** X Splitter

Allows splitting the RGB Tape light from a run or driver, into two or three separate runs.



Shrink Wrap Tube

**NATL-400** Pack of 5

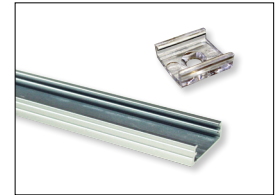
Seals connection made in the field. Necessary to maintain cULus listing. Two shrink wrap tubes are included with every Tape Light roll and section.



End Cap

**NATL-403** Black  
**NATL-403W** White

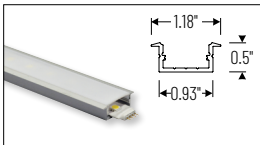
Covers open end of Tape Light.



4' Channel / Clear Mounting Clips

**NATHR-680** 4' Channel / Aluminum  
Aluminum channel is field cuttable.

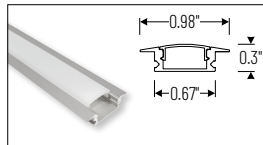
**NATHR-685** Clips / Pack of 15  
Mounts Tape Light to various surfaces. Pack of 15 clear acrylic mounting clips are included with every Tape Light roll.



4' Shallow Recessed Channel

**NATL-C23A** Aluminum

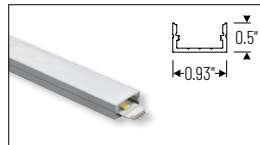
Used to mount tape light recessed in a surface. Plastic diffuser and end caps included. Field cuttable.



4' Shallow Recessed Channel

**NATL2-C23A** Aluminum

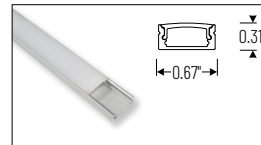
Used to mount tape light recessed in a surface. Diffused lens, end caps and mounting hardware are included. Field cuttable.



4' Shallow Channels

**NATL-C24A** Aluminum  
**NATL-C24B** Black  
**NATL-C24W** White

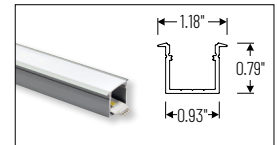
Used to mount tape light to various surfaces. Plastic diffuser and end caps included. Field cuttable.



4' Shallow Channel

**NATL2-C24A** Aluminum

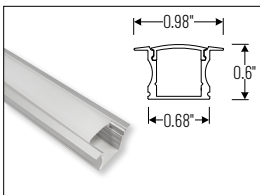
Used to mount tape light to various surfaces. Diffused lens, end caps and mounting hardware are included. Field cuttable.



4' Deep Recessed Channel

**NATL-C25A** Aluminum

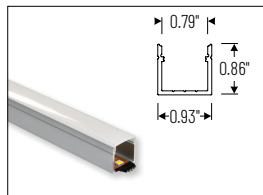
Used to mount tape light recessed in a surface. Plastic diffuser and end caps included. Field cuttable.



4' Deep Recessed Channel

**NATL2-C25A** Aluminum

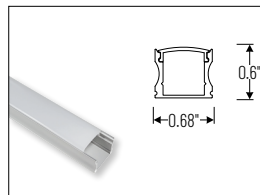
Used to mount tape light recessed in a surface. Diffused lens, end caps and mounting hardware are included. Field cuttable.



4' Deep Channels

**NATL-C26A** Aluminum  
**NATL-C26B** Black  
**NATL-C26W** White

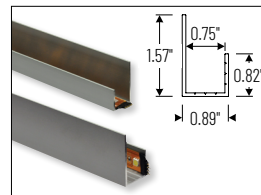
Used to mount tape light to various surfaces. Plastic diffuser and end caps included. Field cuttable.



4' Deep Channel

**NATL2-C26A** Aluminum

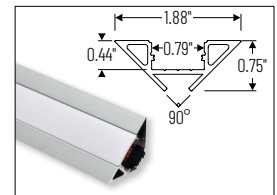
Used to mount tape light to various surfaces. Diffused lens, end caps and mounting hardware are included. Field cuttable.



4' J-Style Channel

**NATL-C27A** Aluminum

Used to mount tape light to various surfaces. Field cuttable.



4' Corner Channels

**NATL-C28A** Aluminum  
**NATL-C28B** Black  
**NATL-C28W** White

Plastic diffuser and End caps included. Field cuttable

# NUTP10 Series

## 24V CCT Color Tuning LED Tape Light Drivers & Accessories

Type

Project

Catalog No.

Notes



Direct Plug-In LED Driver

**NATL-524W** 24V 24W  
**NATL-545W** 24V 45W

**Input Voltage:** 120V  
**Cable Length:** 6 Feet



Direct Plug-In LED Driver

**NATL-596W** 24V 96W

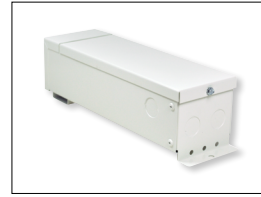
**Input Voltage:** 120V  
**Input Wire:** 5' Cord and Plug  
**Output Wire:** 44" Power line connector



Class II Hardwire LED Driver

**NATL-5030HW** 24V 30W  
**NATL-5100HW** 24V 81.6W

**Input Voltage:** 120-240V  
**Dimming:** Non-Dimmable  
**Includes:** 10' Power Line Connector



Class II Hardwire LED Driver

**NATL-5096-24-HWD10** 24V 81.6W

**Input Voltage:** 120-277V  
**Dimming:** N/A for CCT tape  
**Includes:** 10' Power Line Connector



Class II Hardwire LED Driver

**NATLED-5040HW** 24V 40W  
**NATLED-5075HW** 24V 75W

**Input Voltage:** 120V  
**Dimming:** N/A for CCT tape  
**Includes:** 10' Power Line Connector



Class II Hardwire LED Driver with Breakers

**NMT-303/24C2D1** 120V/24V  
**NMT-303/24C2D2** 277V/24V

**Input Voltage:** 120V or 277V  
**Dimming:** N/A for CCT tape  
**Breakers:** (3) 100W  
**NOTE:** Power Line Connector(s) not included



Class II Hardwire LED Driver with Regulator

**NMTD-60/24D** 24V 60W  
**NMTD-96/24D** 24V 96W

**Input Voltage:** 120-277V  
**Dimming:** N/A for CCT tape  
**Regulator:** Integral regulator for constant current and voltage  
**Includes:** 10' Power Line Connector



Power Line Connector

**NALTL-10** 10' Cable  
**NALTL-30** 30' Cable

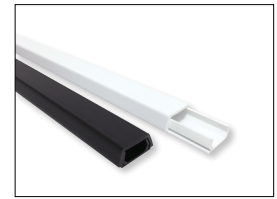
For use with Class II drivers. Carries output from driver, requires power line interconnectors.



5' Power Line Splitter

**NATL-302W**

Splits power line connector into two separate leads, requires power line cable.



2' Wire Raceway

**NATL-422B** Black  
**NATL-422W** White

Field-cutable plastic. Includes wire channel with double faced tape and cover.



Low Voltage Splice Box

**NATL-415W**

Use to join low voltage lead to power line connector.



Terminal Block

**NATL-407** 4-Way  
2-3/8"L x 1-1/8"W x 3/8"D  
**NATL-408** 8-Way  
4"L x 1-1/8"W x 3/8"D



Wire Clip, Plastic - 10pk

**NATL-404W** J-Clip  
**NATL-405W** Over the Wire  
**NATL-406W** Square Clip