

NC2-839

8" Adjustable Sapphire II High Lumen Reflector

Source: 16W to 46W LED
900lm to 3500lm

Type	
Project	
Catalog No.	
Notes	

PRODUCT DESCRIPTION

Adjustable Sapphire II COB Series is a commercial grade LED high lumen downlight. The Sapphire II uses the latest COB technology by Cree[®], which allows for better optic control offering three beam spreads. Beam spreads focus the light down to the work plane from high ceiling applications. The reflectors have been designed for the high efficiency (LPW) while providing low aperture brightness. The Sapphire II COB Series is proudly assembled in the USA.

FEATURES

- Adjustable mechanism tilts up to 35° vertically and 359° horizontal rotation
- Locking vertical aiming
- Adjustable from below the ceiling
- Cree[®] COB technology
- Shatter resistant lens
- Specifiable beam spreads
- 900lm, 1500lm, 2500lm or 3500lm LED packages
- 2700K, 3000K, 3500K and 4000K @ 90+ CRI
- 5-year limited warranty
- ENERGY STAR certified

ELECTRICAL

Lumens / Wattage: L09 = 900lm / 16W; L15 = 1500lm / 24W; L25 = 2500lm / 30W; L35 = 3500lm / 46W

Color Temperature: 2700K, 3000K, 3500K, 4000K

CRI: 90+CRI

Beam Spread: (S) 46° Spot; (M) 55° Narrow Flood; (F) 63° Flood

Lifetime: 50,000 hours @ L70

COMPATIBLE HOUSING

Reflector is only compatible with respective housings manufactured by Nora Lighting.

CATALOG NO. DESCRIPTION

NCAH2-839 8" New Construction Housing for Sapphire Adjustable

SPECIFICATION

Reflector: Bias cut reflector spun from 0.050 high grade aluminum allows LED light engine to illuminate along axis.

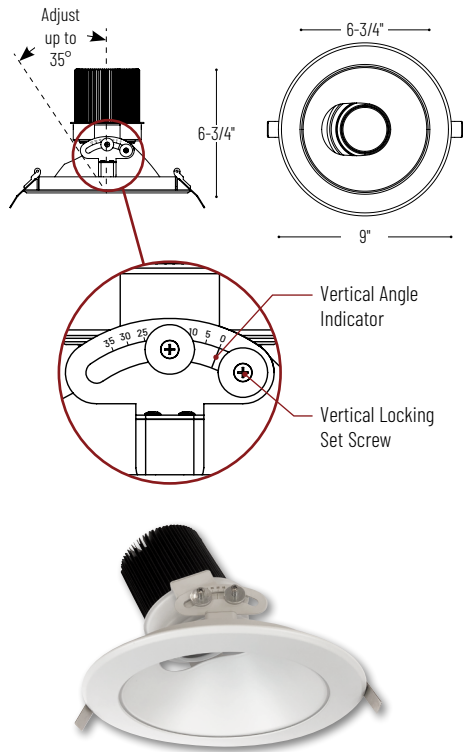
Reflector Assembly: The reflector assembly includes the LED optical package and heat sink mounted on top. Reflector assembly easily wires to dedicated housing with lockable quick connect. Reflector assembly has graduation marks and locking screw.

LABELS AND LISTINGS

- cULus Listed for Damp Locations
- ENERGY STAR certified
- [5-Year Limited Warranty](#)
- FCC compliant



PRODUCT IMAGE & DIMENSIONS



8" Adjustable Sapphire II Reflector - Dedicated Housing Required

Reflector Type	Lumens / Wattage	Color Temperature / CRI	Beam Spread	Reflector / Flange Finish
NC2-839 = Adjustable Reflector	L09 = 900lm / 16W	27 = 2700K / 90 CRI	S = 46° Spot	WSF = White Reflector / Self Flanged
	L15 = 1500lm / 24W	30 = 3000K / 90 CRI	M = 55° Narrow Flood	
	L25 = 2500lm / 30W ¹	35 = 3500K / 90 CRI	F = 63° Flood	
	L35 = 3500lm / 46W ¹	40 = 4000K / 90 CRI		

¹ Not available in 2700K

Example: NC2-839L3530WSF = 8" Adjustable Sapphire II Reflector, 3500lm / 46W LED, 3000K, Spot Beam Spread, White Reflector / Self Flanged

NCAH2-839

8" Adjustable Sapphire II Non-IC New Construction Housing

Source: 16W to 46W LED
900lm to 3500lm

Type _____

Project _____

Catalog No. _____

Notes _____

PRODUCT DESCRIPTION

Adjustable Sapphire II COB Series is a commercial grade LED high lumen downlight. The Sapphire II uses the latest COB technology by Cree®, which allows for better optic control offering three beam spreads. Beam spreads focus the light down to the work plane from high ceiling applications. The Sapphire II series is available in 4", 6" or 8" apertures.

CONSTRUCTION

Plaster Frame: 0.040" galvanized steel frame with integral bar hanger brackets. Brackets can accommodate longer 27" accessory flat bar hangers. Brackets run along all sides of frame to allow bar hangers to be run parallel or perpendicular to junction box.

Housing: 0.040" aluminum housing adjusts for ceiling thicknesses from 1/2" to 1-1/4".

Minimum Clearances: Non-Insulated housings require a minimum clearance of 3" from thermal insulation and 1/2" from adjacent building components. Housings require 24" between adjacent recessed luminaires on center.

Junction Box: Plaster frame integrated 29 cubic inch 0.064" thick galvanized steel, with seven 1/2" knockouts, four pryouts, and snap on cover. Electrical connections are made through a single junction box door. Green wire provided for installations with ground wire fed through PVC pipe conduit. Junction box connects to reflector assembly with lockable quick connect.

ELECTRICAL

Input Voltage: 120-277V

Lumens / Wattage: L09 = 900lm / 16W; L15 = 1500lm / 24W; L25 = 2500lm / 30W; L35 = 3500lm / 46W

Operating Temp.: 0°C to 45°C ambient temperature

Dimming: Triac, ELV or 0-10V, must specify

[Click Here](#) or check complete dimmer list at www.NoraLighting.com in the "Compatibility" page under "Resources" tab

COMPATIBLE REFLECTOR

CATALOG NO.	DESCRIPTION
NC2-839	8" Adjustable Reflector

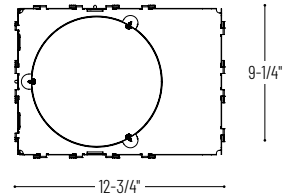
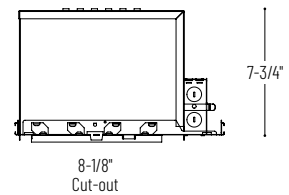
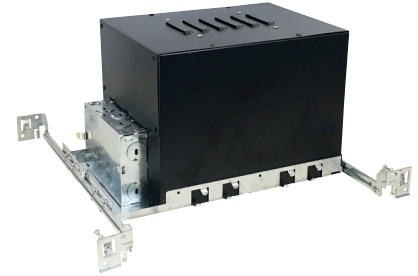
Emergency: Housing can be connected to remote emergency battery, requires top access. Must specify battery with remote test switch separately (NEPK-07LEDUNV).

LABELS AND LISTINGS

- cULus Listed for Damp Locations
- [5-Year Limited Warranty](#)



PRODUCT IMAGES AND DIMENSIONS



8" Sapphire II New Construction Housing - Compatible with Sapphire II Adjustable Reflector

Housing Type	Lumens / Wattage	Driver
NCAH2-839/ - New Construction	09 = 900lm / 16W	LE6 = 120-277V Input; 0-10V dimming
	15 = 1500lm / 24W	LE3 = 120V Input; Triac, ELV and 0-10V dimming
	25 = 2500lm / 30W	
	35 = 3500lm / 46W	

Optional Emergency

Description
NEPK-07LEDUNV = Remote Emergency Battery w/Test Switch

Example: NCAH2-839/35LE6 = 8" Sapphire II New Construction Housing, 3500lm / 46W, 120-277V Input; 0-10V dimming

PHOTOMETRICS

8" Adjustable Sapphire II Series

Type

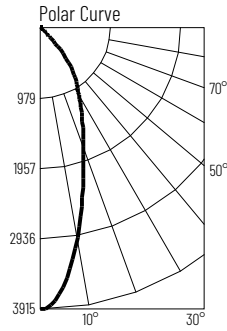
Project

Catalog No.

Notes

Test Information

Test Number: NTR11424
 Part Number: NC2-839L3530SHWSF
 Beam Spread: 46° Spot
 Lumens: 3299lm
 Wattage: 43.7W
 Efficacy: 76lpw
 CCT / CRI: 3000K / 90 CRI
 Spacing Criteria (0°-180°): 0.7
 Spacing Criteria (90°-270°): 0.7



Illuminance at a Distance

Distance from Luminaire	FC at Nadir	Beam Diameter
6'	109fc	5'-1"
8'	61.2fc	6'-10"
10'	39.1fc	8'-5"
12'	27.2fc	10'-1"
14'	20fc	11'-10"

Zonal Lumen Summary

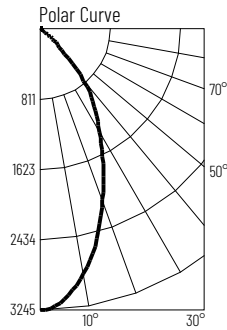
Zone	Lumens	% Luminaire
0-30	1941	58.8
0-40	2616	79.3
0-60	3180	96.4
0-90	3239	98.2
90-180	59	1.8
0-180	3299	100

Candela Table

Vertical Angles	Candela
0	3915
5	3771
15	2819
25	1766
35	1078
45	592

Test Information

Test Number: NTR11423
 Part Number: NC2-839L3530MHWSF
 Beam Spread: 55° Narrow Flood
 Lumens: 3275lm
 Wattage: 43.7W
 Efficacy: 75lpw
 CCT / CRI: 3000K / 90 CRI
 Spacing Criteria (0°-180°): 0.82
 Spacing Criteria (90°-270°): 0.82



Illuminance at a Distance

Distance from Luminaire	FC at Nadir	Beam Diameter
6'	90.1fc	6'-4"
8'	50.7fc	8'-5"
10'	32.5fc	10'-5"
12'	22.5fc	12'-6"
14'	16.6fc	14'-7"

Zonal Lumen Summary

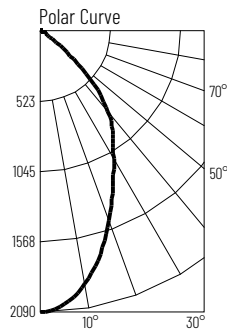
Zone	Lumens	% Luminaire
0-30	1864	56.9
0-40	2563	78.2
0-60	3152	96.2
0-90	3217	98.2
90-180	58.2	1.8
0-180	3275	100

Candela Table

Vertical Angles	Candela
0	3245
5	3172
15	2634
25	1825
35	1115
45	599

Test Information

Test Number: NTR11422
 Part Number: NC2-839L3530FHWSF
 Beam Spread: 63° Flood
 Lumens: 2692lm
 Wattage: 43.7W
 Efficacy: 62lpw
 CCT / CRI: 3000K / 90 CRI
 Spacing Criteria (0°-180°): 0.86
 Spacing Criteria (90°-270°): 0.86



Illuminance at a Distance

Distance from Luminaire	FC at Nadir	Beam Diameter
6'	58.1fc	7'-4"
8'	32.7fc	9'-8"
10'	20.9fc	12'-2"
12'	14.5fc	14'-7"
14'	10.7fc	17'

Zonal Lumen Summary

Zone	Lumens	% Luminaire
0-30	1240	46.1
0-40	1827	67.9
0-60	2555	94.9
0-90	2634	97.8
90-180	58	2.2
0-180	2692	100

Candela Table

Vertical Angles	Candela
0	2090
5	2039
15	1687
25	1259
35	935
45	691