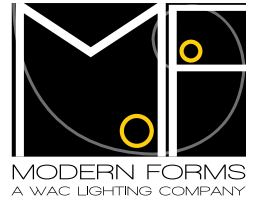


SUSPENSE – model: WS-W19

LED Outdoor

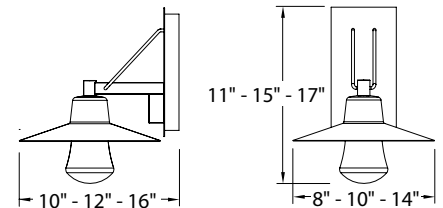


Fixture Type:

Catalog Number:

Project: _____

Location: _____



PRODUCT DESCRIPTION

Giving the proverbial nod to tradition, it takes a powerful LED to pull off this look in a dark sky design. This contemporary lantern showcases a mouth blown clear glass element and is equipped with state of the art LEDs for a filament-free design. Couple your passion for living with our passion for lighting.

FEATURES

- Wet location listed
- Dark sky friendly
- Universal driver (120V, 220V, 277V) only for WS-W1917*
- Twist lock glass for minimal hardware
- Integral transformer in canopy
- Replaceable LED module
- 277V option available special order
- **70,000 hour potential life**
- **Color Temp: 3000K**
- **CRI: 90**

SPECIFICATIONS

Construction: Aluminum with a thick, mouth blown clear glass element.

Light Source: High output LED.

Dimming: Dims to 10% with an electronic low voltage (ELV) dimmer.

Mounting: Mounts directly to junction box.

Finish: Brushed Aluminum (AL), Bronze (BZ).

Installation: Requires Transformer to be recessed within the junction box.

ORDER NUMBER

Model	Height	Width	Watt	Voltage	LED Lumens	Delivered Lumens	Finish
WS-W19	11 11"	8"	11W	120V	860	590	AL <i>Brushed Aluminum</i> BZ <i>Bronze</i>
	15 15"	10"	11W	120V	860	625	
	17 17"	14"	11W	Universal*	1050	835	

WS-W19 -

Example: **WS-W1915-AL**

For 277V special order, add an "F" before the finish: **WS-W1915F-AL**

Modern Forms – A WAC Lighting Company
www.modernforms.com
Phone (800) 526.2588 • Fax (800) 526.2585

Headquarters/Eastern Distribution Center
44 Harbor Park Drive • Port Washington, NY 11050
Phone (516) 515.5000 • Fax (516) 515.5050

Western Distribution Center
1750 Archibald Avenue • Ontario, CA 91760
Phone (800) 526.2588 • Fax (800) 526.2585