

INSTALLATION INSTRUCTIONS

Item # N7738-613

READ AND SAVE THESE INSTRUCTIONS

WARNING! SHUT POWER OFF AT FUSE OR CIRCUIT BREAKER

ASSEMBLING THE FIXTURE (Fig.1)

1. Shut off power at the fuse box or circuit breaker box. If necessary, remove the existing fixture and its mounting hardware.
2. Carefully remove the new fixture from the carton and check that all parts are included as shown in the illustration.

HANG THE FIXTURE (Fig.1)

3. Position mounting plate (C) (Part#A-020-138) onto ceiling, and mark location of the two anchoring set screws (D). Pre-drill the holes (Size:8mm Dia.*75mmL) for anchoring set screws (D).

NOTE: For a safe and secure installation, these fixtures must be installed by means of support that is independent of the junction box. (Note – For heavy fixtures hickey and cable lock are provided, other required hardware to be supplied by installer)

SUGGESTED INSTALLATION:

4. Install a 1/4" IPS pipe (Y1) (not provided) with one end securely mounted to a beam of a structural member. The other end should protrude through the center of junction box as shown in (Fig. 2).
5. Secure hex nut (Y2) onto pipe (Y1) and secure hickey (Y3) tightly.
6. Remove lock nuts (J3) on bottom spider (K2) and lock nuts (J2) on bottom frame holder (P2). Place spider (R) over all threads (O2) on frame (P2). Then secure with lock nuts (J2). Place decorative ring (S) over all threads (O3) of spider (R). Then secure with lock nuts (J3) onto decorative rings (S) as show Fig. 3. Hand tighten until snug.
7. Remove lock nuts (J1) of top frame holder (P1). Then place all threads (O1) through holes of frame (P1). Secure with lock nuts (J1). Hand tighten until snug.
8. This fixture includes three 12", and one 6" rods. Determine the desired hanging height and thread rods (H, I) to all thread (N). Pass the wires and safety cable carefully through each rod as you assemble.
9. Feed wires and safety cable through swivel (G), and mounting plate (C) and allow safety cable to exit through side of hickey (Y3). Loop safety cable around hickey (Y3) and secure assembly with set screw.
10. Thread screws (D1) into pre-drilled holes in mounting plate (C) spaced same distance apart as holes in canopy (F). The length of screw (D1) may be adjusted if necessary. Then tighten with f washer and hex nut on screw (D1).
11. Raise mounting plate (C) (Part#A-020-138) to junction box and secure with junction box screws (B) (size:8-32*1"L) provided. The side of mounting plate marked "GND" must face out.
12. Thread anchoring set screws (D) (Part#A-020-138) on pre-drilled holes on mounting plate (C) on ceiling until snug.

CONNECTING THE WIRES (Fig.2)

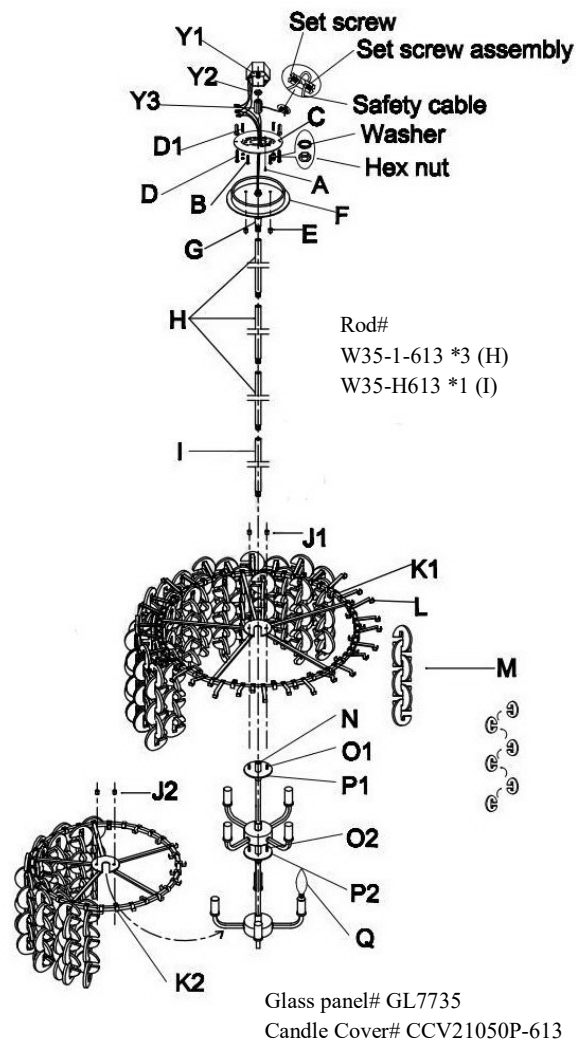
13. Connect the electrical wires as shown in Fig.2, making sure that all wire connectors are secured. If your outlet has a ground wire (green or bare copper), connect both fixture's ground wire and canopy's ground wire to it. Otherwise, connect them directly to the mounting plate (C) using the green screw (A) provided.
14. Tuck connections neatly into the junction box.

COMPLETING THE INSTALLATION

15. Place canopy (F) over mounting plate (C) and secure with knurled knobs (E).
16. Install (8) eight candelabra base bulbs (Q) up to 60 watts each or CFL or LED equivalent (not included) in accordance with the

Fig.1

Set#A-020-138
-Mounting plate
-Green Screw
-Mounting screw (2)

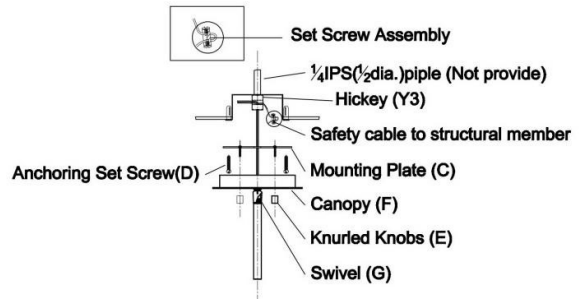


Your installation is now complete. Return power to the junction box and test the fixture.

CAUTION /ATTENTION: When handling the fixture, do not apply pressure to the LEDs. Hold the fixture by the base only.

WARNING: This luminaire must be mounted or supported independently of an outlet box.

Fig.2






<p>FIXTURE WIRES Black or Smooth</p> 	<p>FIXTURE WIRES WHITE OR RIBBED</p> 	<p>FIXTURE WIRES Green or Bare Copper (Ground)</p> 
<p>HOUSE WIRES Black (Hot)</p>	<p>HOUSE WIRES White (Neutral)</p>	<p>HOUSE WIRES Green or Bare Copper (Ground)</p>

Fig. 3

