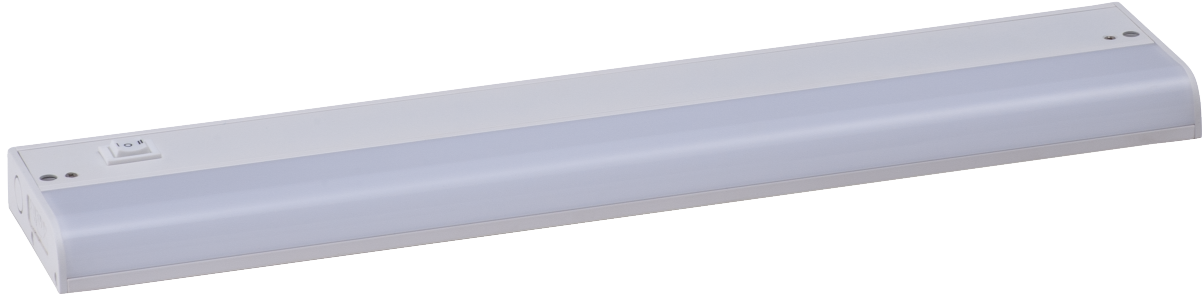


# COUNTERMAX MX-L120-1K | UNDERCABINET 1K

**89850/ 89851/ 89852/ 89853/ 89854/ 899855**

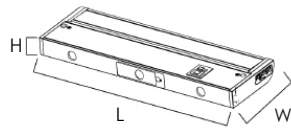
- Acrylic diffuser for uniform reflectance
- Dimmable with Triac Dimmer
- 3000K Color Temperature
- CRI 90+
- Rated life 50,000 hours
- 120V input Voltage
- ETL/ cETL IP65

Job Name : \_\_\_\_\_  
 Job Type : \_\_\_\_\_  
 Quantity : \_\_\_\_\_  
 Comments : \_\_\_\_\_



## PRODUCT DESCRIPTION

Featuring a defused LED light with an 90+ CRI this 3,000K undercabinet light provides an energy efficient light output at an economical price. Available in six sizes with a white finish housing the 1K family is Maxim's starting value in undercabinet lighting.



### MEASUREMENTS

MODEL	DIMENSION	CRI	HCO
89850	6"L x 3.5" W x 1"H	90+	0.75
89851	12"L x 3.5" W x 1"H	90+	0.75
89852	18"L x 3.5" W x 1"H	90+	0.75
89853	24"L x 3.5" W x 1"H	90+	0.75
89854	30"L x 3.5" W x 1"H	90+	0.75
89855	36"L x 3.5" W x 1"H	90+	0.75

### LAMPING

MODEL	BULB TYPE	COLOR TEMPERATURE	LUMENS RATED	DEL	INPUT	DIMMABLE
89850	3W LED (Integrated)	3000K	190	150	120V	Triac CL
89851	5W LED (Integrated)	3000K	320	260	120V	Triac CL
89852	8W LED (Integrated)	3000K	500	470	120V	Triac CL
89853	12W LED (Integrated)	3000K	750	670	120V	Triac CL
89854	16W LED (Integrated)	3000K	1000	830	120V	Triac CL
89855	20W LED (Integrated)	3000K	1250	1140	120V	Triac CL

### INCLUDES

- 3/8" knockouts on back and bottom
- Romex connector
- Mounting screws

*Always consult a qualified electrician before installing any lighting product*

### OPTIONAL



**53885 BK, WT**  
72" Power Cord



**53886 BK, WT**  
12" Connecting Cord



**53887 BK, WT**  
24" Connecting Cord



**53838 BK, WT**  
Junction Box  
4"L x 2.5"W x 1"H

## FINISHES OPTIONS:

White (WT)



## MATERIAL:

Aluminum + Acrylic

## AVAILABLE SIZE:

6" | 12" | 18" | 24" | 30" | 36"

## RATINGS:

ETL cETL  
 Damp Location  
 Energy Star  
 Title 24 JA8 compliant  
 Triac CL Dimmable



## ADDITIONAL:

RATED LIFE: 50,000 Hours  
 OPERATING TEMP: -20° C (-4°), 40° C (104°F)  
 LIGHTING/ INSTALL DIRECTION: Down



**WESTERN DISTRIBUTION CENTER (HEADQUARTER)**  
 253 NORTH VINELAND AVE | CITY OF INDUSTRY, CA 91746

**EASTERN DISTRIBUTION CENTER**  
 4200 SHIRLEY DR. | ATLANTA, GA 30336

P. 626.956.4200 | F. 626.956.4225 | maximlighting.com