

# KICHLER®

---

READ AND SAVE THESE INSTRUCTIONS

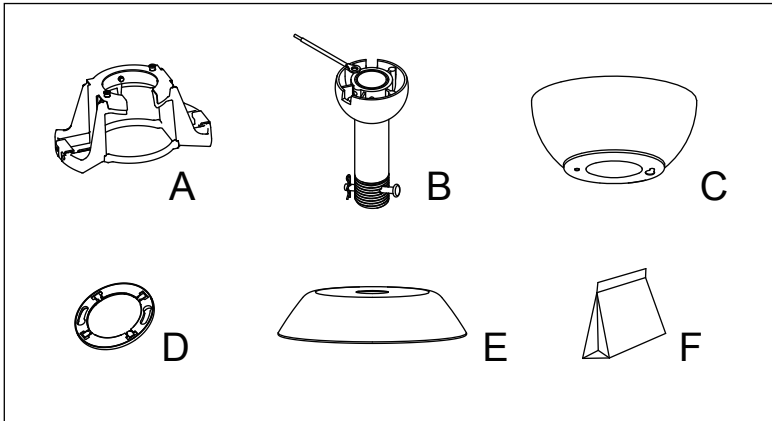
## ERIS DOWN ROD HANGER KIT

337060



U.S. Patent Pending

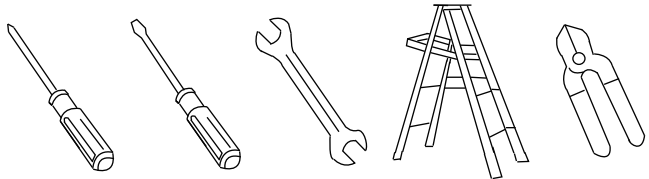
This carton contains the following parts. Please make sure you have everything.



- A. Mounting Bracket ..... (1pc)
- B. Downrod Assembly ..... (1set)
- C. Canopy ..... (1pc)
- D. Canopy Screw Cover ..... (1pc)
- E. Coupling Cover ..... (1pc)
- F. Package Hardware ..... (1set)

## TOOLS AND MATERIALS REQUIRED

- Phillips screwdriver
- Blade screwdriver
- 11 mm wrench
- Step ladder
- Wire cutters



## MOUNTING OPTIONS

Make sure the outlet box you've selected for mounting your ceiling fan is UL listed and rated for ceiling fan use.

NOTE: Make sure the electrical power is turned off before starting. Disconnect at the main circuit box.

It's very important that the outlet box is securely installed and will not move or your ceiling fan will wobble after installation.

If you need to install a new outlet box, secure it directly to the building structure using appropriate fasteners and building materials.

The outlet box and its support must be able to fully support the moving weight of the fan (at least 50 lbs.). Do not use plastic outlet boxes.

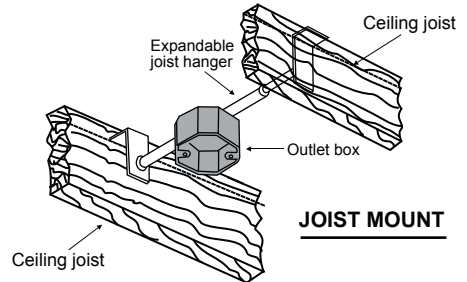


Fig. 1

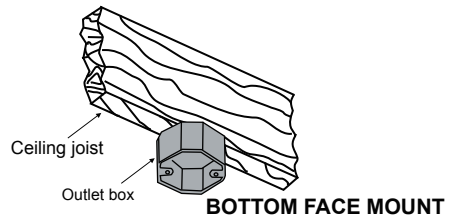


Fig. 2

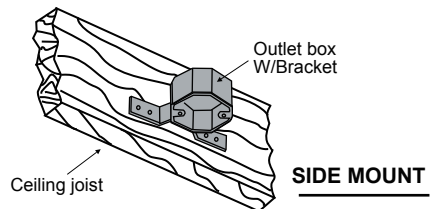


Fig. 3

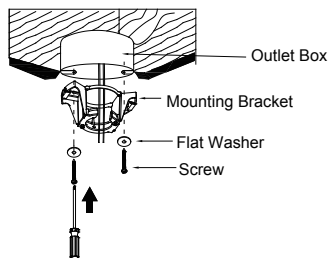


Fig. 4

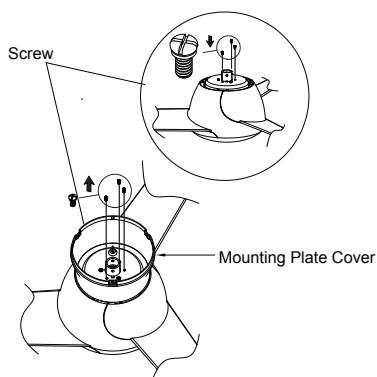


Fig. 5

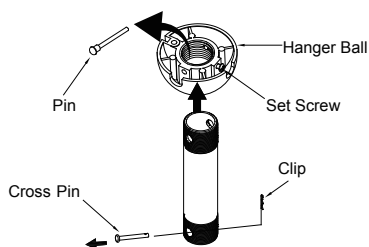


Fig. 6

**Step 1.** Assemble the mounting bracket to ceiling outlet box using the screws and washers supplied with the outlet box. (Fig. 4)

**Step 2a. For Eris fan installed with mounting plate cover.**

Remove the three (3) mounting screws to release the mounting plate cover from ceiling fan, then reinstall the removed screws back to the ceiling fan. (Fig. 5).

**Step 2b. For Eris fan installed without mounting plate cover.**

Install three (3) mounting screws found in the fan mounting plate cover hardware bag to the ceiling fan, and tighten them. (Fig. 5).

**IMPORTANT:** Must install and tighten three (3) mounting screws, otherwise will destroy your fan.

**Step 3.** Remove the hanger ball from downrod assembly by loosening set screw, removing the pin, and sliding ball off the rod. Remove the clip and cross pin from the downrod. (Fig. 6)

**Step 4.** Route the black, white, blue wires and safety cable through the downrod. Thread downrod into the downrod support on top of the motor. Install the cross pin by aligning the holes in the downrod support with holes in the downrod. Secure cross pin with clip. Install and tighten the two set screws to the downrod support. (Fig. 7)

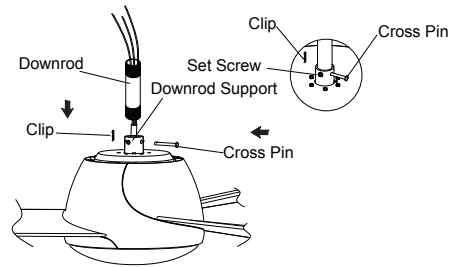


Fig. 7

**Step 5.** Route wires through coupling cover, canopy screw cover and canopy. (Fig. 8)

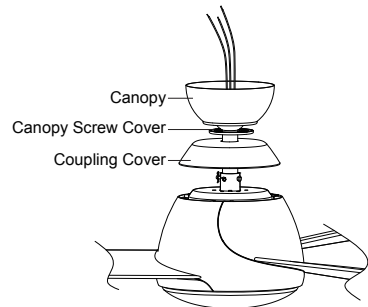


Fig. 8

**Step 6.** Carefully reinstall the hanger ball on the downrod as follows. Route the wires through the hanger ball. Position the pin through the two holes in the downrod and align the hanger ball so the pin is captured in the groove on the top of the hanger ball. Pull the hanger ball up tight against the pin. Securely tighten the set screw in the hanger ball. A loose set screw could cause fan wobble. (Fig. 9)

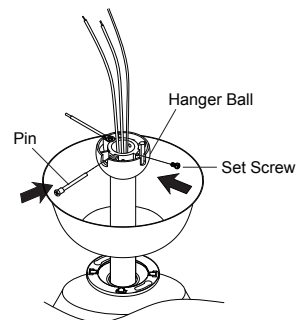


Fig. 9

**NOTE:** All set screws must be checked, and retightened where necessary, before installation.

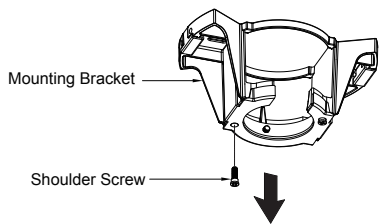


Fig. 10

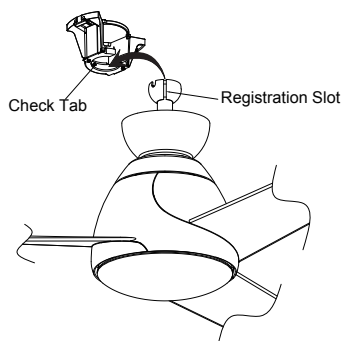


Fig. 11

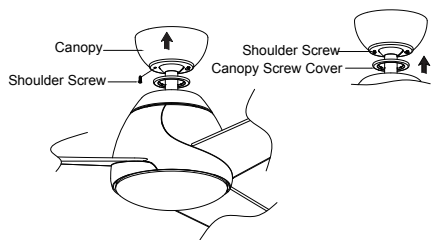


Fig. 12

**Step 7.** Remove one of the two shoulder screws in the mounting bracket and save for use in Step 9. Loosen the second shoulder screw without fully removing it. (Fig. 10)

**Step 8.** Now lift the motor assembly into position and place the hanger ball into the mounting bracket. Rotate until "Check Tab" has dropped into the "Registration Slot" and seated firmly. (Fig. 11) The entire motor assembly should not rotate.

**WARNING:** Failure to properly seat the "Check Tab" can damage the ceiling fan during operation.

**Step 9.** Assemble canopy by rotating key slot in canopy over shoulder screw in hanger bracket. Tighten shoulder screw. Fully assemble and tighten second shoulder screw that was previously removed. Securely attach and tighten the canopy screw cover over the shoulder screws in the mounting bracket utilizing the keyslot twist-lock feature. (Fig. 12)