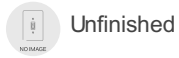


SPECIFICATIONS

Certifications/Qualifications	
	www.kichler.com/warranty
Dimensions	
Weight	0.25 LBS
Height	1.75"
Length	1.75"
Width	0.50"
Mounting/Installation	
Location Rating	Accessory, Listing Not Required

FIXTURE ATTRIBUTES

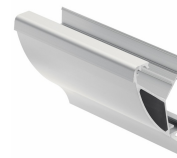
Housing	
Primary Material	Steel
Product/Ordering Information	
SKU	1TEA090VCONN
Finish	Unfinished
Style	Other
Finish Options	



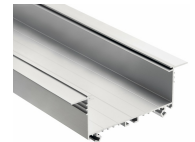
ALSO IN THIS FAMILY



1TEE2S1SFSSIL



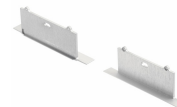
1TEC2M2SF8SIL



1TEC6EMRC8SIL



1TEE2DMRCSSIL



1TEE6EMRCSSIL



1TELC008WHO