

The "Pearl & Tassel" Collection



©
96010S2JA-71

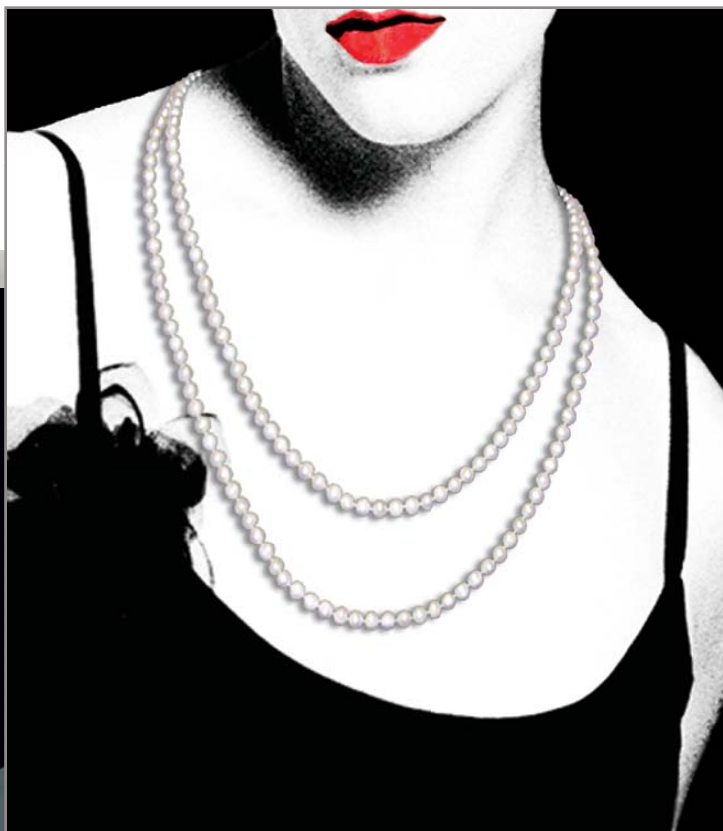
© COPYRIGHT ALL WORLDWIDE
RIGHTS RESERVED BY
james r. moder®

*The Pearl & Tassel Collection
 in a room setting
 at a glance.*



The "Pearl" Collection

Available With or Without Non-tilt Shades.



96019S2P-95
 Crystal: IMPERIAL™ (-22) (pictured),
 Ø 8+4 x 60w, ↔ 33"(84cm) x † 35"(89cm)
 Finish: Silver (S).

96020S2P-95 (Larger Version)
 Ø 21 (12+6+3) x 40w, ↔ 39"(99cm) x
 † 43"(109cm)

Legend: P = Pearl

© COPYRIGHT ALL WORLDWIDE
 RIGHTS RESERVED BY

James R. Moder®

*Pamper yourself with Pearls and Jewels that you can
"Steal for the Evening" from your JRM Crystal Chandelier*

james r. moder
BEVERLY HILLS · NEW YORK · PARIS · LONDON · TOKYO · VANCOUVER



96016S2P-95
Crystal: IMPERIAL™ (-22) (pictured),
Ø 6 x 60w, ↔ 29" (74cm) x ↓ 30" (76cm)
Finish: Silver (S).

96011S2P-95 (Wall Sconce) →
Crystal: IMPERIAL™ (-22) (pictured),
Ø 1 x 60w, ↔ 5" (13cm) x ↓ 14" (36cm) x 9" (23cm) Ext.
Finish: Silver (S) .



96018S2P
Crystal: IMPERIAL™ (-22) (pictured),
Ø 8 x 60w, ↔ 31" (79cm) x ↓ 35" (89cm)
Finish: Silver (S).

(STRASS & ELEMENTS are now named Swarovski® crystals)

Also available in:
Swarovski crystals (-00)

© Copyright 2015 James R. Moder®
Swarovski crystals, SPECTRA CRYSTAL, STRASS are registered trademarks of Swarovski AG.

The "Tassel" Collection

Available with or without shades and trimmed in either clear or colored Crystal. The design of these Chandeliers is truly unique. The shimmering effect of light reflected off Crystal beads is stunning.

Available With or
Without Non-tilt
Shades.



Optional Selection of
Crystal Tassel Color
(shown above -2JA)

96010S2JA-71

Crystal: IMPERIAL™ (-22) (Pictured With Black
Tassel Clear Bead Option)

Ø 21(12+6+3) x 40w, ↔ 37"(94cm) x ↓ 43"(109cm)

Finish: Silver (S).

© COPYRIGHT ALL WORLDWIDE
RIGHTS RESERVED BY

james r. moder®



96001S2J-71 (Wall Sconce)
 Crystal: IMPERIAL™(-22) (pictured),
 Ø 1x 60w, ↔ 5" (13cm) x
 † 14" (36cm) x 9" (23cm) Ext.
 Finish: Silver (S).



©

©

96009S22
 Crystal: IMPERIAL™ (-22) (pictured),
 Ø 8+4 x 60w, ↔ 30" (76cm) x † 35" (89cm)
 Finish: Silver (S).



james r. moder® Crystal Chandeliers
are designed and manufactured to the highest
quality standards, engineered for best value
and are distributed around the world.

Available With or
Without Non-tilt Shades.



94195S-95

Diameter of Crystal
Chandelier is 2" wider
with this shade as
indicated in description.



96004S-71

Non Tilt
Shade

Design your own colors.

The Tassel Collection can be ordered
With or Without shades and with 2
shade options, with 3 tassel color options
(Clear, Burgundy, Jet Black), and with
or without matching color Crystal strands
(Clear is standard). Please specify.



96009S2B-95

Crystal: IMPERIAL™ (-22) (pictured),
Ø 8+4 x 60w, ↔ 33"(84cm) x ↓ 35"(89cm)
Finish: Silver (S).

© COPYRIGHT ALL WORLDWIDE
RIGHTS RESERVED BY

james r. moder®

james r. moder.
moder.IMPACT[™]
 Crystal Chandelier
Fashion



96006S22

Crystal: IMPERIAL[™] (-22) (pictured),
 Ø 6 x 60w, ↔ 27" (69cm) x ↓ 31" (79cm)
 Finish: Silver (S).

Tassel Colors Available.



Clear
 (-22)



Burgundy
 (-2B)



Jet Black
 (-2)



96008S22-95
 Crystal: IMPERIAL[™] (-22) (pictured),
 Ø 8 x 60w, ↔ 32" (81cm) x ↓ 34" (86cm)
 Finish: Silver (S).