

INSTALLATION INSTRUCTIONS FOR P1120-L

For LED Wall Mount Fixture

WARNING! SHUT POWER OFF AT FUSE OR CIRCUIT BREAKER.
AVERTISSEMENT ! COUPER LE COURANT AU NIVEAU DES FUSIBLES OU DO DISJONCTEUR.

PREPARATION

1. Shut off power at the fuse box or circuit breaker box. If necessary remove the old fixture and mounting hardware.
2. Carefully unpack your new fixture and lay out all the parts on a clear area. Take care not to lose any small parts necessary for installation.

MOUNTING THE FIXTURE (FIG. 1)

3. Using large wire connector, connect the white input wire from the driver (A) to the white wire from the junction box. Using large wire connector, connect the black input wire from driver (A) to the black wire from the junction box and tuck the driver (A) and connected wires carefully inside the junction box. (Note: To be installed with a 4" round or octagon junction box)
4. Secure circular strap (B) to the junction box using junction box screws (E) (Size: 8-32*1/2"L). The side of the mounting plate marked "GND" must face out.

CONNECTING THE WIRES (FIG. 2)

5. Using small wire connector, connect the red output wire from driver to the red input wire from the led module. Using small wire connector, connect the black output wire from driver to the black input wire from led module see Fig. 2, making sure that all wire connectors are secured. If your junction box has a ground wire (green or bare copper). Using large wire connector, connects the fixtures ground wire to it. Otherwise, connect the fixture ground wire directly to the circular strap (B) using the green screw (C) provided. Tuck the wire connections neatly into the junction box.

FINISHING THE INSTALLATION (FIG.1)

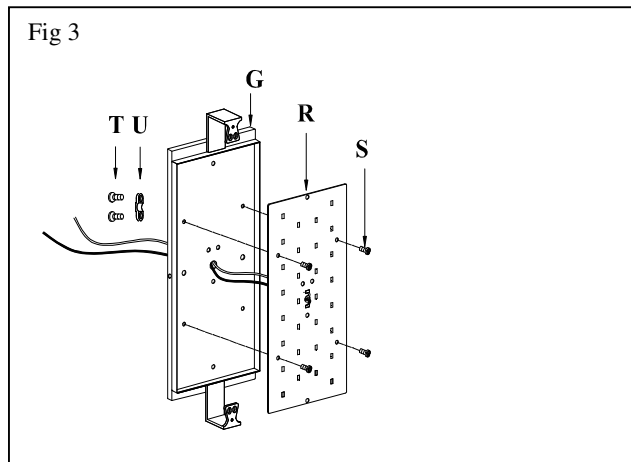
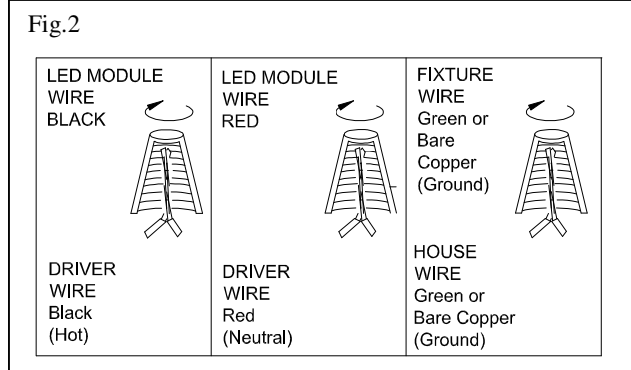
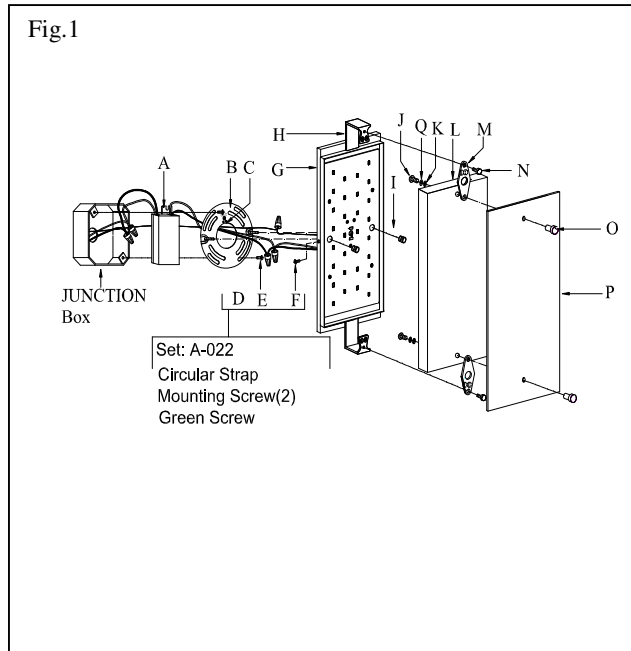
6. Align fixture (G) to circular strap (B) and secure with cap nuts (I).
7. Put the rivet (O) through diffuser (P), flange (M) and glass (L), put the screw (J) through gasket (Q) and plastic gasket(K) and secure to rivet (O). **Note: Align the two raised points on the flange (M) to the two holes on the bracket (H).**
8. Align the glass assembly to bracket (H) on fixture (G) and secure with screws (N).

CAUTION /ATTENTION : When handling the fixture, do not apply pressure to the LED's. Hold the fixture by the base or front plate (G) only.

Replacing LED module (Fig. 3)

The LED module can be replaced by a qualified electrician without cutting of wire and without damage to any decorative element to which the fixture is attached. See installation steps for more details (Fig. 3) **Warning: Turn off power at the circuit breaker before replacing LED module or LED driver.**

- a. Remove screws (N) from bracket (H) on fixture (G) and remove diffuser assembly (L).
- b. Remove fixture (G) from circular strap (B) and remove the wire nuts inside of front plate (G), remove screw (T) on fastener (U) to disconnect the LED module (R).
- c. Remove screws(S) and carefully remove the LED module (R) from fixture (G).
- d. Reverse steps a-c for installing the new LED module.
- e. Note: The LED module should be provided by a specified supplier.
- f. For better heat dissipation the LED module (R) should be applied with thermal grease when re-lamping.



Brand: Lutron			
Ordering Information <input type="checkbox"/> Boxed <input checked="" type="checkbox"/> Clamshell			
Model number	Product name	Control type	Maximum capacity
<input checked="" type="checkbox"/> DVCL-153P-	Diva-C-L	Single-pole/3-way dimmer-	150 W CFL/LED or 600 W Incandescent/ Halogen 120 V
<input checked="" type="checkbox"/> DVCL-153PH-			
<input checked="" type="checkbox"/> DVSCCL-153P-	Diva C-L Satin Colors		
<input checked="" type="checkbox"/> CTCL-153P-	Skylark Contour C-L		
<input checked="" type="checkbox"/> CTCL-153PH-			
<input checked="" type="checkbox"/> AYCL-153P-	Ariadni C-L		

MIN 75°C SUPPLY CONDUCTORS

IMPORTANT:

Fixture should be installed by a qualified electrician to ensure proper wiring and installation.

Dimmable with C-L (CFL & LED) type and Incandescent/Halogen type dimmers

