



PRODUCT DESCRIPTION

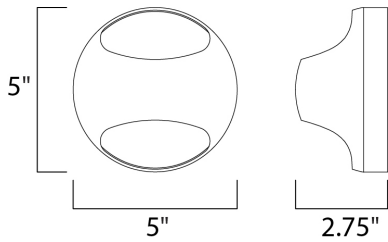
Modern art meets modern light, the Wink collection combines form and function in a unique, wall-mounted hemisphere. Powerful, yet hidden, Xenon lamps spill light through elliptical windows in the dome refracting and diffusing the warm glow. In Polished Chrome, reflections radiate and add to the dance of light while a Satin Nickel finish creates a more subtle effect and Matte Black makes an understated impact.

MEASUREMENTS

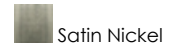
DIMENSION : 5" W x 5" H x 2.75" Ext
 MAX OAH : 5" W x 1" H
 HANGING WEIGHT : 0.5 lb

LAMPING

INPUT VOLTAGE : 120V
 LUMENS : 280 Rated
 BULB : 1 x 4W LED AC Integrated , 4W Total
 BULB INCLUDED : (Integrated)
 DIMMABLE : Triac CL
 CRI : 80+ CRI
 COLOR_TEMP : 3000K
 LIGHTING_DIRECTION : Indirect



FINISHES OPTION



MATERIAL

Steel

RATINGS

cETLus
 Damp Location
 ADA



ADDITIONAL

ADJUSTABLE
 INSTALL UP/DOWN: All
 RATED LIFE 25000 Hours
 OPERATING TEMPERATURE:
 -20°C (-4°F), 40°C (104°F)
 PHOTOMETRIC: Report Found Online

Always consult a qualified electrician before installing any lighting product.



WESTERN DISTRIBUTION CENTER (HEADQUARTER)
 253 NORTH VINELAND AVE | CITY OF INDUSTRY, CA 91746

EASTERN DISTRIBUTION CENTER
 4200 SHIRLEY DR. | ATLANTA, GA 30336

P. 626.956.4200 | F. 626.956.4225 | et2online.com