

CRYST RAMA



1958

95 Cantiague Rock Road, Westbury NY 11590

ph:516.931.9090 fax: 516. 931.1254

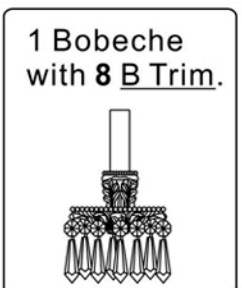
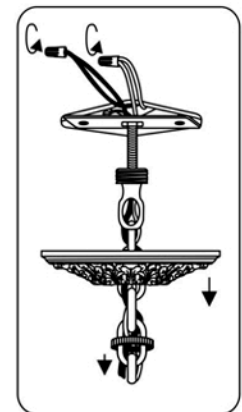
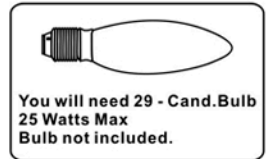
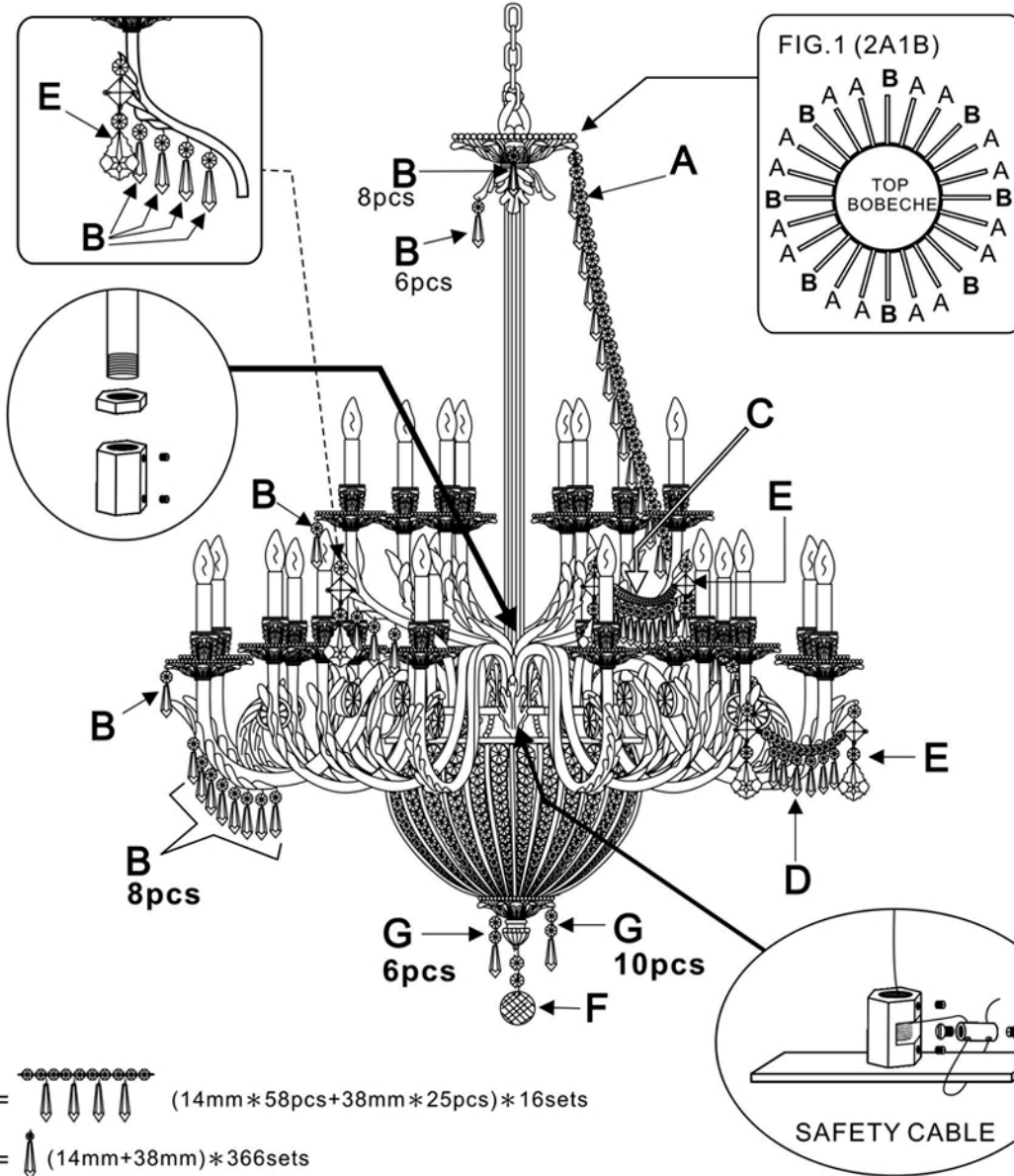
info@crystorama.com www.crystorama.com

MODEL#:5170

ASSEMBLY AND DRESSING INSTRUCTIONS



All electrical components must be installed by a licensed electrician in accordance with the National Electric Code and the appropriate local electrical codes.



- A= (14mm * 58pcs + 38mm * 25pcs) * 16sets
- B= (14mm + 38mm) * 366sets
- C= [14mm * 18pcs + (14mm + 38mm) * 8pcs] * 8sets
- D= [14mm * 14pcs + (14mm + 38mm) * 6pcs] * 16sets
- E= (14mm + 18mm + 14mm + 76mm) * 24sets
- F= (14mm * 2pcs + 60mm) * 1set
- G= (14mm * 2pcs + 38mm) * 16sets

