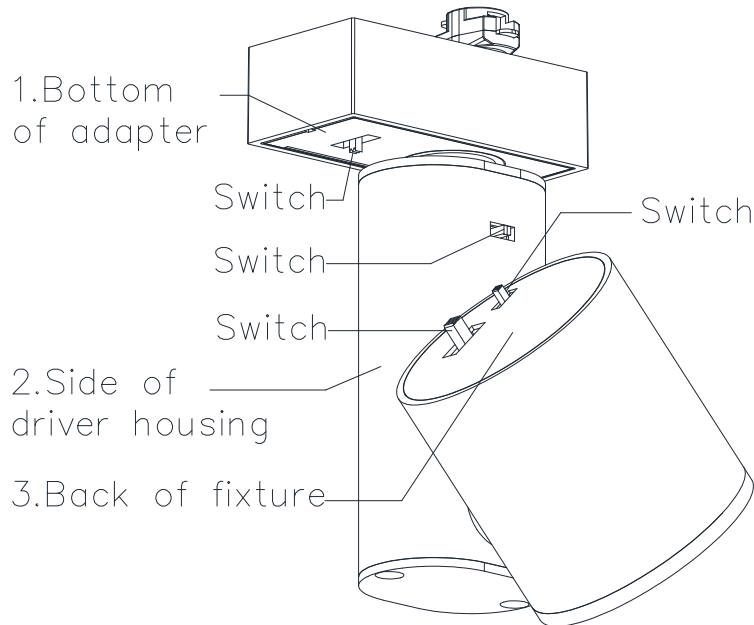


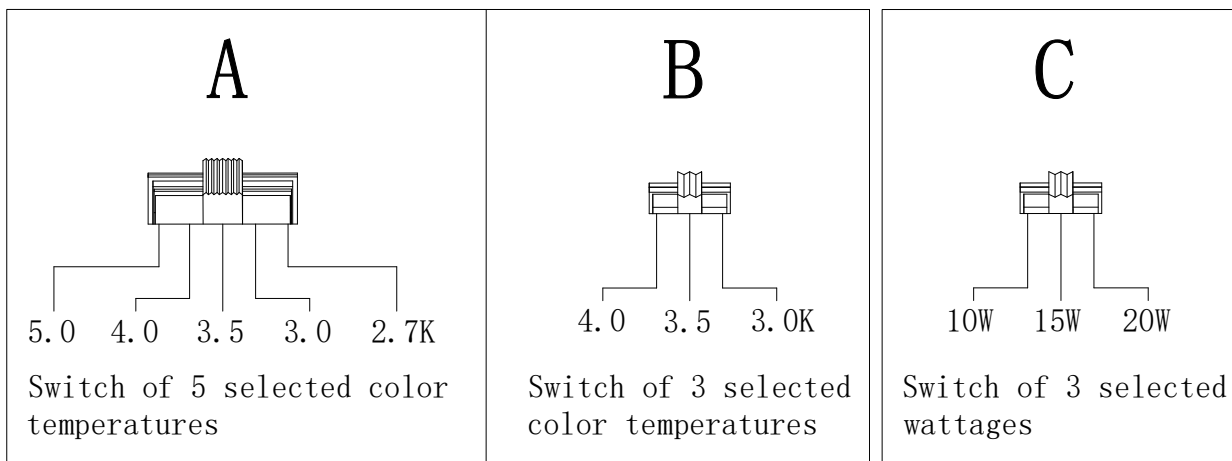
HOW TO USE THE SWITCHS OF COLOR TEMPERATURE & WATTAGE :

Thank you for buying this LED fixture. You can easily find switch **A.B.C** on the fixture as the picture shows **1. 2. 3.** below. Not all fixtures have switch **A.B.C** . Some fixtures have no switch, which means this fixture is designed with one color temperature (**1CCT**) and singal wattage. Som fixtues have only one switch, and one fixture has only two switches maximum. Also this established design is unchangable.



Switches A or B : Switch of selected Yellow or WH color temperature.

Switch of 3 or 5 selected color temperatures **A** or **B** : A wide range of 3 different color temperatures (**3CCT**) or 5 different color temperatures (**5CCT**) are provided on the fixrure. Digits of 3 or 5 color temperatures are shown above the switch by laser engraving. By only sliding the switch to the right or the left, the suitable light of color temperature is easily selected depending on the demand of the varied surroundings. Some fixtures have **switch-A** of 5 CCT, some have **switch-B** of 3 CCT and some have no switch of providing such function.



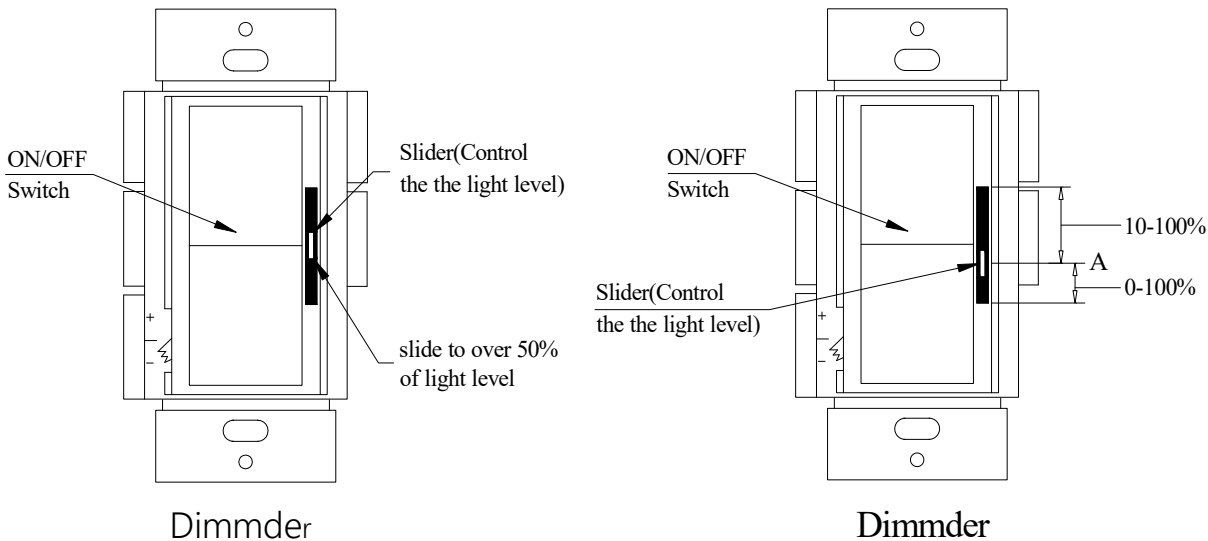
Switches C : Switch of selected high or low wattage for shine or darkness

3 multiple, different power of wattages are provided. Digits of 3 different wattages are shown above the switch by laser engraving. By only sliding swith to the right or the left, the suitable power of wattage is easily selected depending on the demand of varied surroundings. Some fixtures have no switch of providing such function.

SUGGESTION TO USE THE DIMMERS :

Prior to turning on the dimmer switch, adjust the slider to the position over 50% of light level like the picture shows below and then turn on the dimmer switch and adjust the slider to dim. If you turn on the dimmer switch at the lowest light level and the head does not light up or when you are dimming, dimming is not fluent. We suggest that you adjust the slider to the highest level and then slide down.

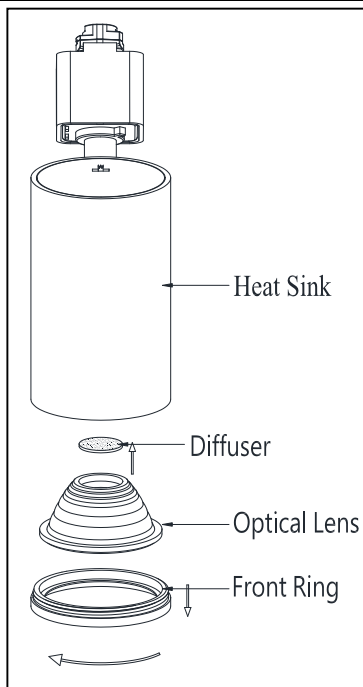
Due to different devices of LED products, for some LED products, when slider of dimmer is adjusted to the light lever between 0%-10%, it might cause flickering. When slider is adjusted below point A, it means that the output wattage of the light begins to decrease below 10%. If light flickers, it is normal. Pls adjust the slider over the point of A between 10%-100% and then it is back to the normal.



It is recommended to use Lutron's model# of LED dimmer switches:

DVCL-253P DVSCCL-253P SCL-153P DVCL-153P CTCL-153P TGCL-153P
DVELV-300P AYCL-153P AYCL-253P GTJ-250M SELV-300P GT-150 DVSCCL-153P

HOW TO CHANGE THE OPTICAL LENS (IF PROVIDED) TO THE DIFFERENT ANGLES :



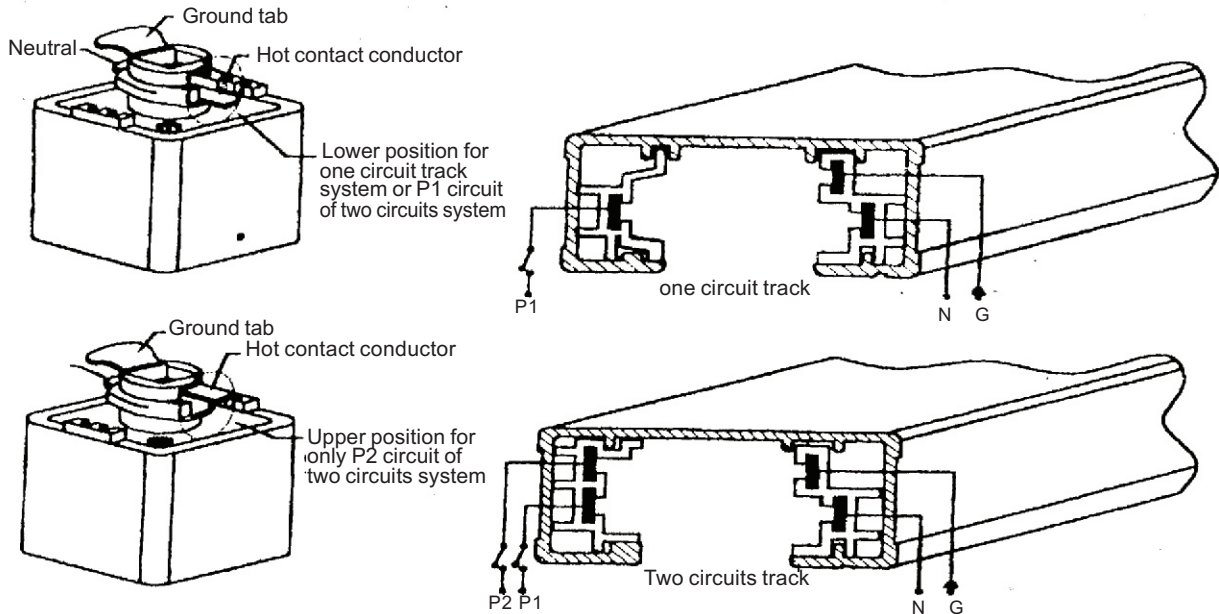
1. Unscrew the Front Ring counterclockwise from the Heat Sink.
2. Take out the Optical Lens from Front Ring (If there is a diffuser, take out the Diffuser from the Optical Lens).
3. Put Optical Lens in different angle inside the Front Ring (If there is a diffuser, put diffuser back inside the opening of Optical Lens).
4. Rotate the Front ring onto the Heat Sink clockwise until it is tight.

Note : If the Diffuser tilts little on the opening of the Optical Len, it is acceptable. Diffuser can be corrected to be flat on the opening of Optical Len when Front Ring is rotated onto the Heat Sink clockwise.

SAVE THESE INSTRUCTIONS

CAUTION: Before installing track head, make sure the hot contact conductor is on the right position.

1. To use track head on one circuit track system, the hot contact conductor at the top of track head must always be in the lower position. To move the lever from the upper to the lower position, simply push lever down.
2. Two circuits track system is designed for use when two separately controlled circuits are needed on one section of track. Each circuit is rated for 2400 watts and will allow you to control two individual sets of fixtures.
3. To use track head on two circuits track system, the hot contact conductor at the top of track head should be in lower position for P1 circuit. For P2 circuit, move the lever from the lower to the upper position.



SAVE THESE INSTRUCTIONS

IMPORTANT SAFETY INSTRUCTIONS FOR TRACK LIGHTING

1. Turn off switch at main power source before installing any track of fitting.
2. Before installing lampholder, make sure to refer to the instruction on the backside.
3. Pull down the locking lever and insert "Adaptor contact" into the slot in the track.
4. Rotate adaptor 1/4 turn 90° to locked position. **NOTE:** Polarity line of lampholder (Grounding tab, polarity side of two fingers) must point to track debossed polarity line so that the debossed polarity line of the track can be aligned with the polarity line (side) of adaptor.
5. To remove, depress the locking lever and turn 90°

