

Assembly Instruction Sheet #S-1108P32-2 For Style 1108P32-2

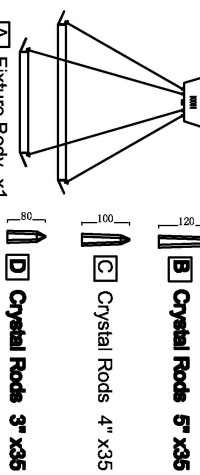
Tools Required: Flathead screwdriver, Phillips screwdriver, pliers, wire cutters, wire strippers, electrical tape, safety glasses.
Light Source: (2) 120V / LED 50W DIMMABLE (4000K)
Estimated Assembly Time: 20-30 minutes

Preparation: Identify and inspect all parts before beginning installation. Check package content list and diagrams below to be sure all parts are present. If any parts are missing or damaged, do not attempt to assemble, install, or operate the fixture. Contact customer service for replacement parts.

Warnings and Cautions

Turn off electricity at circuit breaker or main fuse box before installation. Consult a licensed electrician if in doubt. These instructions are provided for your safety. It is very important you read them completely before installing the fixture. We strongly recommend that a licensed, professional electrician perform the installation. Disconnect fixture from power source before replacing bulbs. Make sure bulbs are given sufficient time to cool before removal.

Package Contents



Hardware Contents

PART	DESCRIPTION	QUANTITY
AA	Screw	2pcs
BB	Shielded Insulation	2pcs
CC	Outlet Box	1pc
DD	Mounting Screw	2pcs
EE	Canopy	1pc

STEP 1 - Attach Mounting Screws, Lock Washers and Hex Nuts to Crossbar

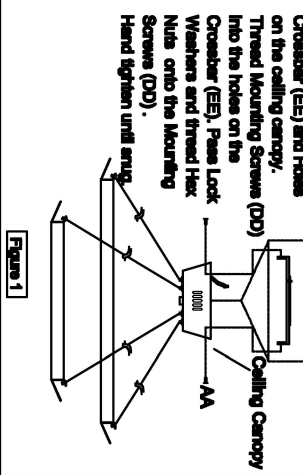


Figure 1

STEP 2 - Attach Crossbar to Outlet Box.

A. Pass the supply wires through the Crossbar (EE). Attach the Crossbar (EE) to the Outlet Box (CC) with the head of the Green Ground Screw facing you. Secure it with Outlet Box Screws (not included). Tighten until snug.

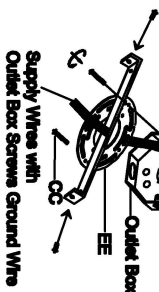


Figure 2

STEP 3 - Fit Ceiling Canopy to Crossbar Assembly.

A. Fit the ceiling canopy to mounting screws (DD) and secure with Screw (AA). Note: The ceiling canopy should be snug against the ceiling and the Screw (AA). If not, adjust the length of the Mounting Screws (DD) by unscrewing the Hex Nut and Lock Washer and then screwing Mounting Screws (DD) in or out of the Crossbar (EE) until the correct length is achieved. Once the ceiling canopy is secure, remove the Screw (AA) and ceiling canopy and proceed to Step 4.

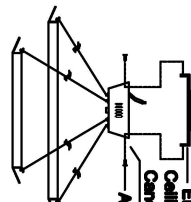


Figure 3

STEP 4 - Wire Connections.

A. Use standard wire connectors (not included) to make all wire connections. Twist connectors until wires are tightly joined together. Wrap each connection with approved electrical tape and carefully stuff all the connected wires into the Outlet Box.

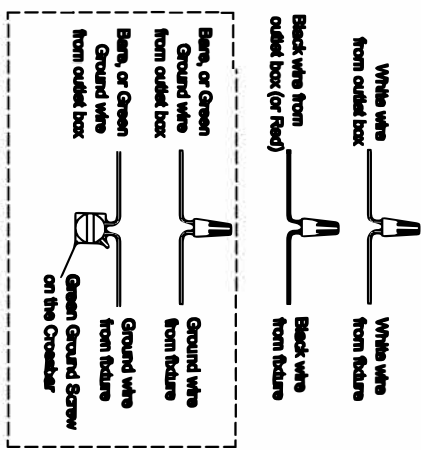


Figure 4

STEP 5 - Install Ceiling Canopy to Ceiling.

A. Carefully tuck all wires into the outlet box and position the ceiling canopy of the Fixture Body (A) over the outlet box. Align the holes in the ceiling canopy with the mounting screws (DD). Secure with Screw (AA) and hand tighten until snug.

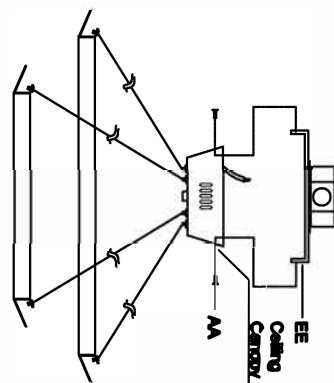


Figure 5

STEP 6 - Install Oval Crystal

A. Assemble the Crystals on the Fixture frames then fix them with screws.

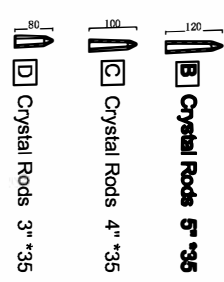
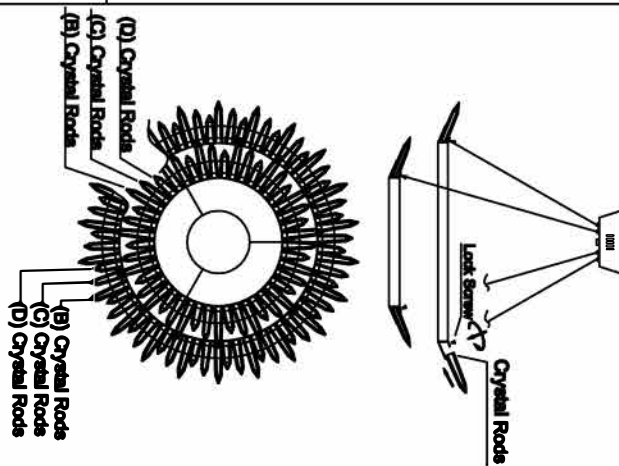


Figure 6