

3.0m Round Santa Ana Side Wind



Post size: 70mm x 70mm x 3mm.

Rib size: 35 x 20mm 1.5-2.5mm thickness with cross support reinforcing and mirror trim.

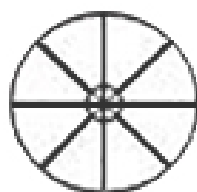
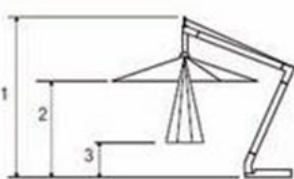
Rib and Stay component: Marine grade nylon. All parts are designed to be easily interchangeable.

Opening System: geared winch imported from Italy with stainless steel wire.

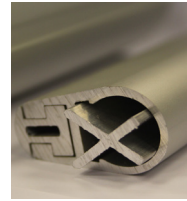
Operation: Canopy rotates 360° and upto 45° tilt giving you the choice of angle needed using our rope cleat system to hold it in place.



Santa Ana Side Wind range: 3 year guarantee for commercial use.



1	Total height	2.8m
2	Open height	2.1m
3	Closed height	1.2m
4	Canopy size	3.0m



Ribs

Aluminium with a mirror trim creates a unique finish. Interlocking profiles make the ribs exceptionally strong.



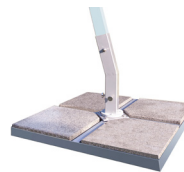
Hub and Runner

Marine grade nylon PA66 ensures a strong, smooth, durable opening mechanism.



Winch system

Geared winch ensures the canopy is easy to open and close.



Base frame and brackets

All the metal parts are galvanized and powder coated using interpon. Comes with adjustable feet or optional castor wheels.



Rib ends

We use an insert nut and stainless steel bolt to fix the end of the cover to the rib for extra strength and clean lines.



Easy opening

Sprung loaded ribs which stops them from getting stuck inward when closed, making the parasol easy to open.

