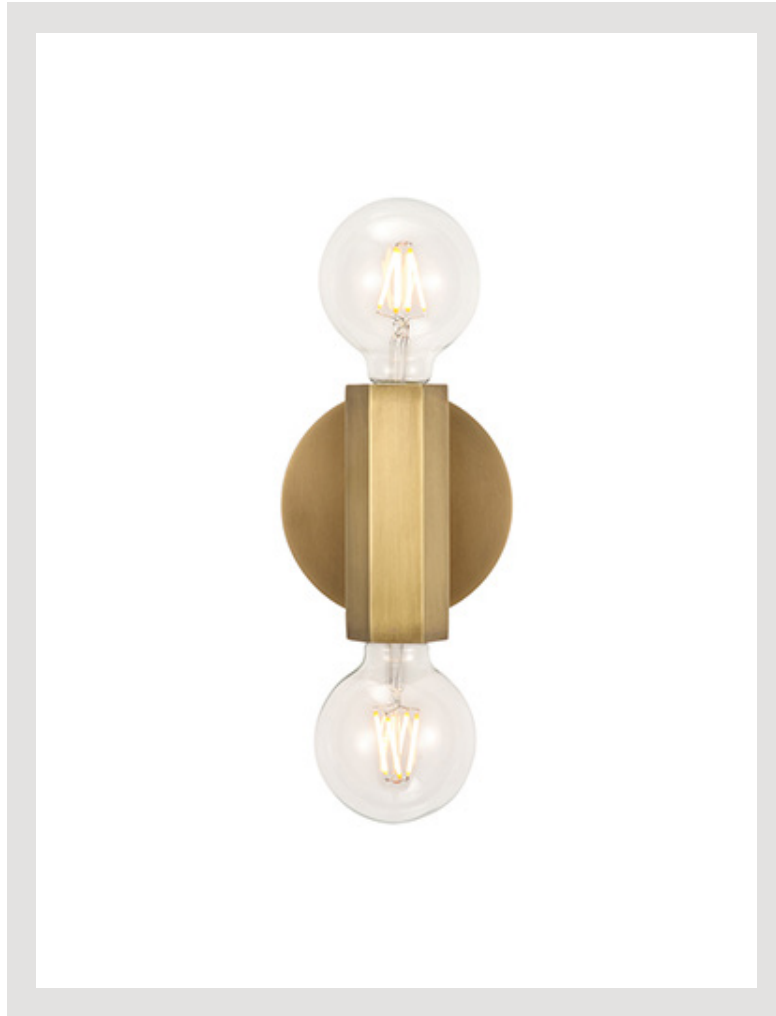


HEXA

WV307011VB



FIXTURE DIMENSIONS	4.8" W x 5" H x 3.6" E
HEIGHT FROM CENTER	2.5"
WEIGHT	1.1 LBS
GLASS	-
MATERIAL	-
CANOPY SIZE	4.8" D x 0.8" E
LAMPING	2 x 60W, E26
VOLTAGE	120V
WIRE / CORD LENGTH	-
CORD TYPE	-
MINIMUM HANG HEIGHT	-
INSTALL OPTIONS	-
ADA COMPLIANT	Yes
CERTIFICATION	UL
UPC	841387000326
PACKAGE SIZE	6.1" x 5.4" x 6.4"
PACKAGE WEIGHT	2 LBS

[D - Diameter, L - Length, W - Width, H - Height, E - Extension]

AVAILABLE FINISHES:



*For complete warranty terms, please visit:
www.aloralighting.com/warranty