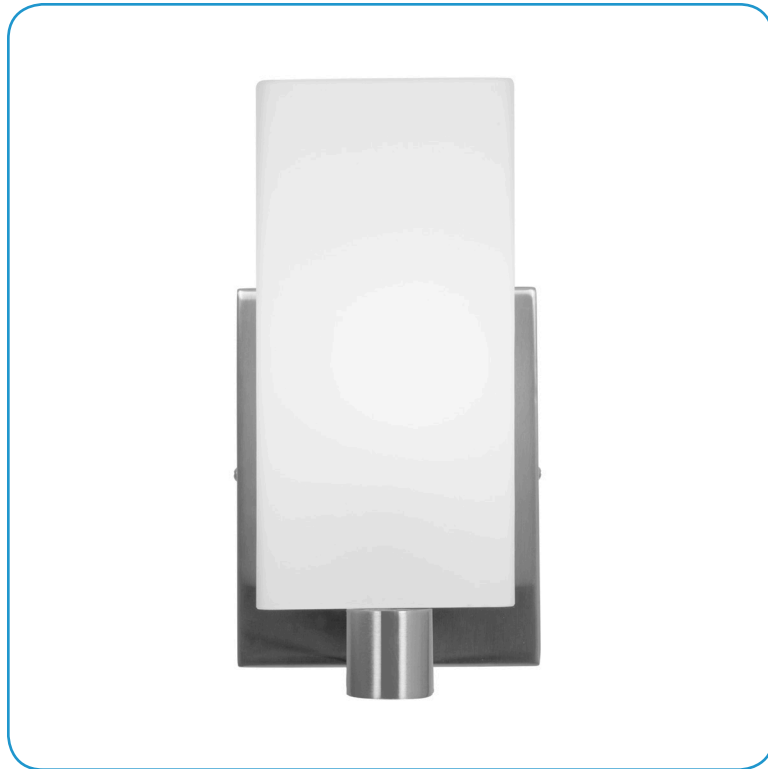


Model No :: **50175-BS/OPL**
 Name :: Archi



Project Name :: _____
 Location :: _____
 Type :: _____
 Quantity :: _____
 Notes :: _____

Product Information

Product ID :: 50175
 UPC Code :: 641594159363
 Mounting Type :: Wall
 Finish :: Brushed Steel (BS)
 Diffuser :: Opal (OPL)
 Alt. Finishes :: N/A
 Alt. Diffusers :: N/A

Product Dimensions

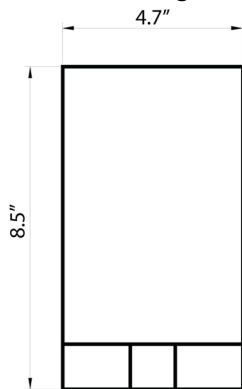
Fixture	Canopy
Length :: N/A	Length :: 5.9"
Width :: 4.7"	Width :: 4.75"
Diameter :: N/A	Diameter :: N/A
Extension :: 5.51"	Height :: 0.9"
Height :: 8.5"	
Overall Height :: N/A Max.	



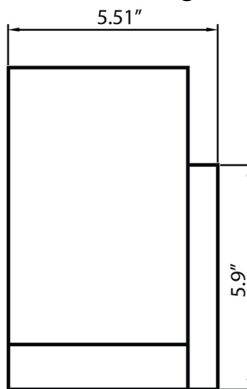
Technical Specifications

Qualifications	Specifications	Photometrics	Recommended Dimmers
Location Rating :: Damp	Frame Material :: Metal	CCT :: 2700	(TRIAC) Any Standard Dimmer
Certification :: cETLus	Diffuser Material :: Glass	CRI :: N/A	
IES File :: No	Voltage :: 120v	Wattage :: 60 W	
JA8 Compliant :: No	Lamping Type :: Incandescent	Nominal Lumens :: 800	
Energy Star :: No	Lamping Base :: E-26	Delivered Lumens :: N/A	
ADA Compliant :: No	Lamp Quantity :: 1	Custom Options :: N/A; Additional Items :: N/A	
Marine Grade :: No	Lamp Wattage :: 60 W		
Emergency Lighting :: No	Total Wattage :: 60 W		
Warranty :: 1 Year Limited	Lamps Included :: No		
	J-Box Type :: Standard		

Line Drawing #1



Line Drawing #2



IES File

Image Not Available

Toll Free 800-828-5483 or www.AccessLighting.com

14410 Myford Road, Irvine, CA 92606

The information provided is subject to change without notice. ©2018 Access Lighting Corporation. All Rights Reserved
 Rev. 201809 Filename: 50175-BS_OPL.pdf

