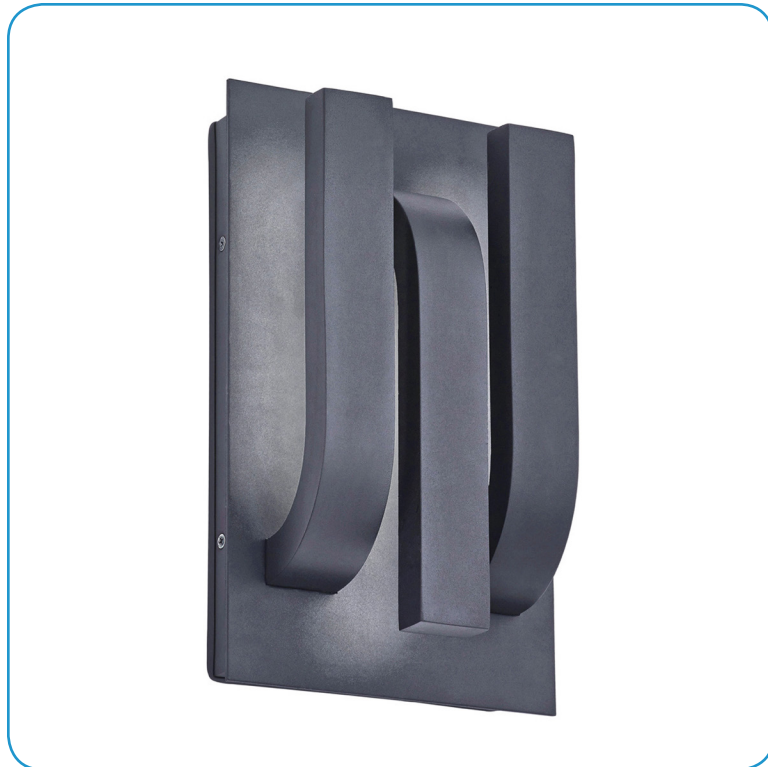


Model No :: **20056LEDDMG-SAT**
 Name :: Trilogy



Project Name :: _____
 Location :: _____
 Type :: _____
 Quantity :: _____
 Notes :: _____

Product Information	
Product ID ::	20056
UPC Code ::	641594215243
Mounting Type ::	Wall
Finish ::	Satin (SAT)
Diffuser ::	N/A
Alt. Finishes ::	Bronze (BRZ)
Alt. Diffusers ::	N/A

Product Dimensions			
Fixture		Canopy	
Length ::	N/A	Length ::	N/A
Width ::	9.6	Width ::	N/A
Diameter ::	N/A	Diameter ::	N/A
Extension ::	3.7	Height ::	N/A
Height ::	16		
Overall Height ::	N/A Max.		



Technical Specifications

Qualifications	Specifications	Photometrics	Recommended Dimmers
Location Rating :: Wet	Frame Material :: Steel	CCT :: 3000	(TRIAC) LEVITON Sureslide 6633-P; (TRIAC) LEVITON Surslide 6631; (TRIAC) LUTRON Skylark S-600 or S-600P
Certification :: cULus	Diffuser Material :: Acrylic	CRI :: 80	
IES File :: No	Voltage :: 120v	Wattage :: 18 W	
JA8 Compliant :: No	Lamping Type :: Dedicated LED	Nominal Lumens :: 1600	
Energy Star :: No	Lamping Base :: SSL	Delivered Lumens :: N/A	
ADA Compliant :: Yes	Lamp Quantity :: 3		
Marine Grade :: Yes	Lamp Wattage :: 6 W		
Emergency Lighting :: No	Total Wattage :: 18 W		
Warranty :: 5 Year Limited	Lamps Included :: Yes		
	J-Box Type :: Standard		

Custom Options :: N/A; Additional Items :: N/A

Line Drawing #1	Line Drawing #2	IES File
	Image Not Available	Image Not Available

Toll Free 800-828-5483 or www.AccessLighting.com

14410 Myford Road, Irvine, CA 92606
 The information provided is subject to change without notice. ©2018 Access Lighting Corporation. All Rights Reserved
 Rev. 201809 Filename: 20056LEDDMG-SAT.pdf

